

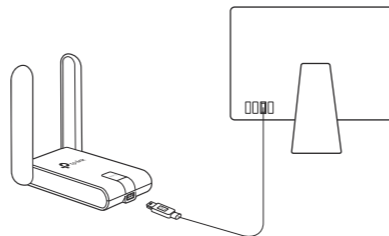
300Mbps High Gain Wireless USB Adapter

MODEL NO. TL-WN822N

 For Mac OS X

1 Connect to a Computer

Connect the adapter to your computer using the USB cable provided.



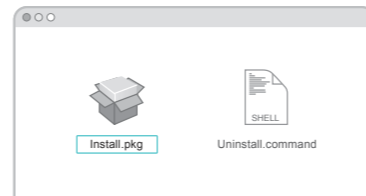
2 Install Driver and Utility

a. Download the driver and utility from this product's Support page at www.tp-link.com.

Note:
If your computer has a CD drive, you can also run the included CD to install the driver and utility.

b. Unzip the downloaded folder and run the **Install.pkg**.

c. Follow the instructions to complete the installation.

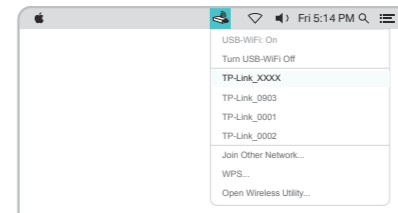


3 Join a Wireless Network

Option 1: Via TP-Link Utility

a. Click  (TP-Link Utility) on the menu bar.

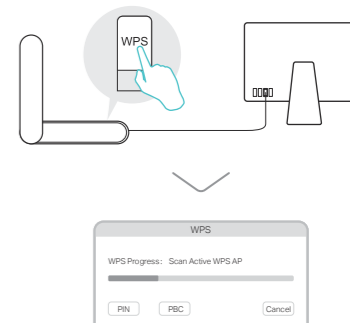
b. Select your Wi-Fi network and enter the Wi-Fi password when prompted.



Option 2: Via Wi-Fi Protected Setup (WPS)

a. Press the WPS button on your router.

b. Within 2 minutes, press and hold the WPS button on the adapter until the WPS progress window appears.



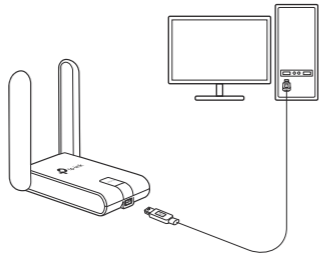
c. When the "WPS Protocol Finished!!" message appears, click **OK**.



For Windows

1 Connect to a Computer

Connect the adapter to your computer using the USB cable provided.



Note:
In Windows XP, a Found New Hardware Wizard window will appear when the adapter is detected. Please click **Cancel**.

2 Install Driver and WPS Tool

a. Insert the CD and run the **Autorun.exe**.

Note:
You can also download the driver from this product's Support page at www.tp-link.com.

b. Select **TL-WN822N** and follow the steps to install the driver and WPS Tool.

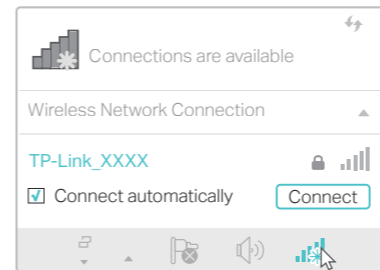
Note:
If you can't install the driver successfully, disable the antivirus software and firewall, then try again.



3 Join a Wireless Network

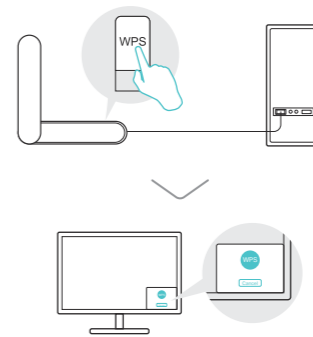
Option 1: Via Windows Wireless Utility

- Click the network icon (📶 or 📶) on the taskbar.
- Select your Wi-Fi network, click **Connect** and enter the password when prompted.



Option 2: Via WPS Tool

- Press the WPS button on your router.
- Within 2 minutes, press and hold the WPS button on the adapter until WPS Tool opens.



- When the "Success!" message appears, your computer is connected to Wi-Fi.



For detailed instructions, please refer to the User Manual from this product's Support page at www.tp-link.com.



For technical support and other information, please visit <http://www.tp-link.com/support>, or simply scan the QR code.

This USB Adapter can only be powered by computers that comply with Limited Power Source (LPS).



ERIC
©2017 TP-Link