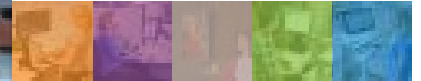
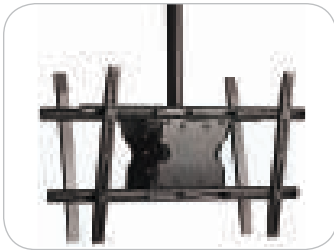
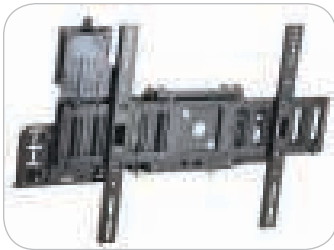
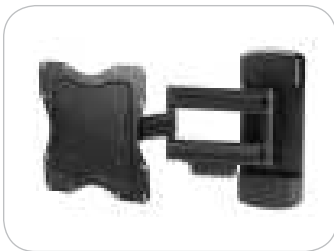




# Digital signage: bring the message to your audience

Boost profits and increase traffic with Ergotron digital signage mounting and mobility solutions



Mounting and  
Mobility Solutions  
for Your Entire Facility



**JUST  
STAND  
.ORG**

# Little effort, big impact. That's the value from Ergotron.

Whether communicating powerful, attention-grabbing graphics or streaming video, the appeal of digital signage is in its quick and effortless ability to manipulate content in real-time to influence audience behavior. However, one of the keys to implementing a powerful message is effective positioning. This is where Ergotron can help. Our innovative line of display mounts and mobile workstations move content to the audience, creating a powerful impact.



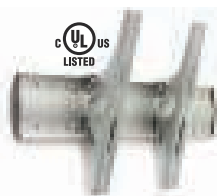
## Carts



Neo-Flex Mobile MediaCenter: rotate your screen for portrait/landscape viewing.



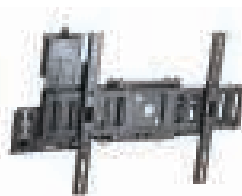
Part # (color)	Light Duty 24-190-085 (black)	Very Heavy Duty 24-191-085 (black)	Ultra Heavy Duty 24-192-085 (black)
<b>Optional Accessories:</b> Camera Shelf Kit 97-491-085; 660/700/800 mm Kit 97-489; VESA CPU Kit 97-527-009			
<b>Typical LCD Size</b>	27–55"	37–60"	50–70"
<b>Weight Capacity</b>	25–50 lbs (11.4–22.7 kg)	50–90 lbs (22.7–40.9 kg)	90–120 lbs (40.9–54.4 kg)
<b>Lift</b>	20" (51 cm)	20" (51 cm)	20" (51 cm)
<b>Tilt</b>	20°	20°	20°
<b>Rotation</b>	90° Portrait to landscape screen rotation. See website for details	90° Portrait to landscape screen rotation. See website for details	90° Portrait to landscape screen rotation. See website for details
<b>VESA</b>	MIS-D/E/F See website for details	MIS-D/F See website for details	MIS-D/F See website for details



**TM Tilting Wall Mount**

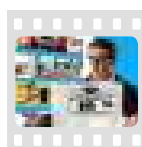
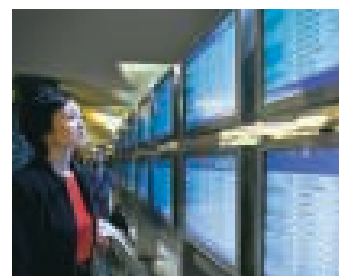


**WM Low Profile Wall Mount**



**SIM90 Signage Integration Mount**

Part # (color)	60-603-003 (silver) XL 60-601-003 (silver)	60-604-003 (silver) XL 60-602-003 (silver)	60-600-009 (black)
Typical LCD Size	32–65" XL 42–65"	32–65" XL 42–65"	≥ 32"
Weight Capacity	≤ 175 lbs (79,4 kg)	≤ 175 lbs (79,4 kg)	≤ 115 lbs (52,2 kg)
Tilt	20°	—	15°
Rotation	—	—	90° Portrait to landscape screen rotation. See website for details
VESA	MIS-D/E/F See website for details	MIS-D/E/F See website for details	MIS-F See website for details
Depth	3.5" (8,9 cm)	1.25" (3,2 cm)	4.8" (12,1 cm)



See the "Bracketology Simplified" movie  
<http://movies.ergotron.com>



**Neo-Flex Tilting Wall Mount VHD**



**Neo-Flex Tilting Wall Mount UHD**

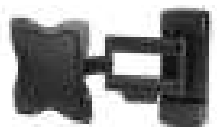


**Neo-Flex Wall Mount VHD**

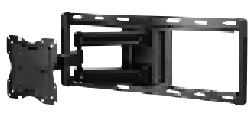


**Neo-Flex Wall Mount UHD**

Part # (color)	60-613 (black)	60-612 (black)	60-615 (black)	60-614 (black)
<b>Optional UHD Accessory: NF VESA Adaptor 97-590 (black)</b>				
Typical LCD Size	23–42"	37–63"	23–42"	37–63"
Weight Capacity	≤ 80 lbs (36,3 kg)	≤ 175 lbs (79,4 kg)	≤ 80 lbs (36,3 kg)	≤ 175 lbs (79,4 kg)
Tilt	20°	15°	—	—
VESA	100 x 100 to 400 x 300	100 x 100 to 600 x 400	100 x 100 to 400 x 300	100 x 100 to 600 x 400
Depth	1.9" (4,9 cm)	2.7" (6,9 cm)	1.6" (4,1 cm)	1.7" (4,4 cm)



**Neo-Flex Cantilever VHD**



**Neo-Flex Cantilever UHD**



**Interactive Arm LD**



**Interactive Arm HD**



**Interactive Arm VHD**

Part # (color)	60-618 (black)	60-619 (black)	45-299-026 (polished aluminum)	45-296-026 (polished aluminum)	45-304-026 (polished aluminum)
Typical LCD Size	23–42"	37–52"	19–26"	30–60"	30–60+"
Weight Capacity	≤ 80 lbs (36,3 kg)	≤ 125 lbs (56,7 kg)	7–20 lbs (3,2–9,1 kg)	18–40 lbs (8,2–18,2 kg)	35–70 lbs (15,9–31,8 kg)
Tilt	20°	20°	↑ 70° / ↓ 5°	↑ 10° / ↓ 15°	↑ 5° / ↓ 15°
Pan	180°+	180°+	180°	180°	180°
VESA	100 x 100 to 400 x 400	100 x 100 to 600 x 400	75 x 75 to 200 x 200	200 x 100 to 600 x 400	200 x 100 to 600 x 400
Depth	3.3" (8,4 cm)	5.5" (14 cm)	3.9" (9,9 cm)	5.5" (14 cm)	6.5" (16,5 cm)
Extension	15.6" (39,7 cm)	22" (55,9 cm)	16.6" (42 cm)	24" (61 cm)	28" (71 cm)



**LX HD Wall Mount Swing Arm**



**LX HD Wall Mount Pivot**

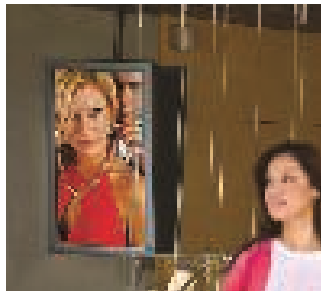


**Neo-Flex Wall Mount ULD**

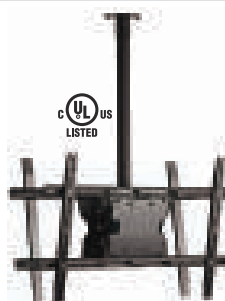
Part # (color)	45-268-026 (polished aluminum)	45-269-009 (black)	97-589 (black)
Typical LCD Size	≤ 42"	≤ 42"	13–32"
Weight Capacity	≤ 50 lbs (22,7 kg) Adding second extension (45-189-194) reduces maximum weight capacity to 36 lbs (16,3 kg)	≤ 50 lbs (22,7 kg)	≤ 40 lbs (18,1 kg)
Tilt	20°	20°	—
Pan	360°	40°	—
Rotation	360° Portrait to landscape screen rotation	360° Portrait to landscape screen rotation	—
VESA	MIS-D/E/F See website for details	MIS-D/E/F See website for details	75 x 75 to 200 x 200
Depth	Folds to 3.7" (9,1 cm)	3.7" (9,1 cm)	0.5" (1,3 cm)
Extension	13" (33 cm)	—	—

Our products set new standards for ease of installation and are readily adapted to the unique conditions of any location.

LCD SIZE IS APPROXIMATION. DIMENSION IS DIAGONAL MEASUREMENT OF SCREEN. LCD SIZE MAY BE EXCEEDED AS LONG AS SCREEN WEIGHT DOES NOT EXCEED MAXIMUM WEIGHT CAPACITY OF THE MOUNT









Professional grade ceiling mounts provide single and back-to-back flat panel mounting options. With versatility and flexibility built right in, these mounts are ideal for any ceiling application – whether TV viewing or digital signage.



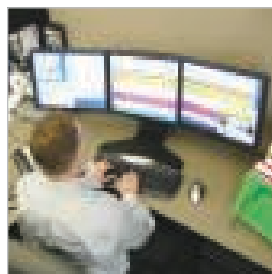
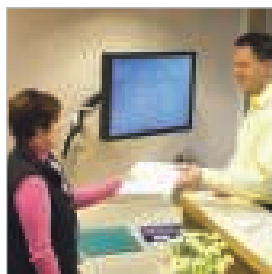
**Neo-Flex  
Ceiling Mount, Double**



**Neo-Flex  
Projector Ceiling Mount**

Part # (color)	60-622 (black)	60-623 (black)
 Typical LCD Size	two 37–70"	—
 Weight Capacity	≤ 400 lbs (181,4 kg)	Small to large projectors ≤ 40 lbs (18,1 kg)
 Tilt	30°	30°
 Pan	—	30°
 Rotation	—	360°
 VESA	100 x 100 to 800 x 400	—

+ Finance + Healthcare + Hospitality + Automotive + Enterprise + Transportation + Education + Retail + Restaurants + Offices + Public Venues + Events + Libraries +



© 2012 Ergotron, Inc. Made in US rev. 06/13/2012 e-01-034-EA Content is subject to change without notification

## Americas Sales and Corporate Headquarters

St. Paul, MN USA  
(800) 888-8458  
+1-651-681-7600  
www.ergotron.com  
sales@ergotron.com

## EMEA Sales

Amersfoort, The Netherlands  
+31 33 45 45 600  
www.ergotron.com  
info.eu@ergotron.com

## APAC Sales

Tokyo, Japan  
www.ergotron.com  
apaccustomerservice@ergotron.com

## Worldwide OEM Sales

www.ergotron.com  
info.oem@ergotron.com

