

SliderMouse Pro

Wired

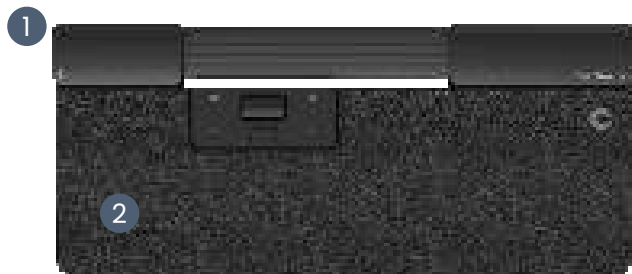


Product
Manual

Contour

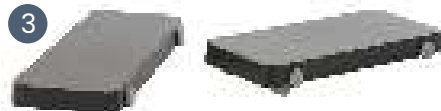
What's in the Box?

1. SliderMouse Pro
2. Wrist rest
3. Keyboard Risers
4. USB charging cable (*mounted*)



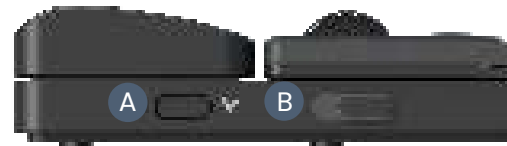
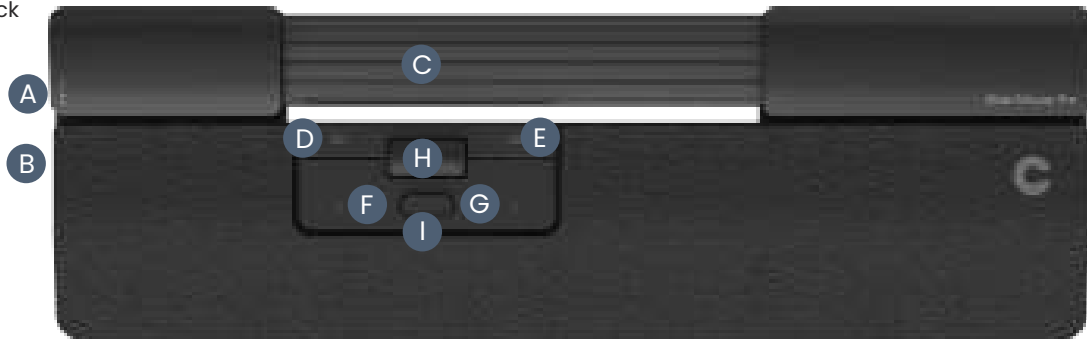
User guide

SliderMouse Pro



Functions

- A. Cursor speed
- B. Power switch (*no function for wired unit*)
- C. Navigation bar
- D. Copy
- E. Paste
- F. Left-click
- G. Right-click
- H. Scroll wheel
- I. Double-click

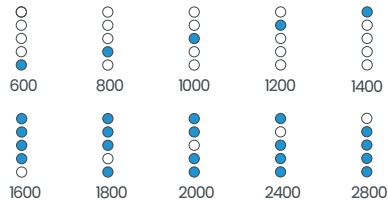
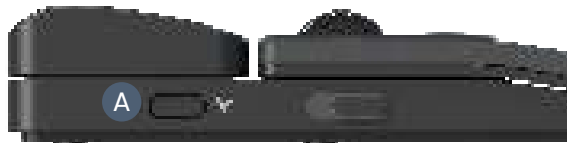


Connection

Connect the USB cable from your SliderMouse into an available USB port on your computer. Your computer will recognize your new device and connect automatically.

Cursor Speed (DPI)

Press the Cursor speed (button **A**) to cycle through cursor speeds. There are speed selections which range from slow (600 DPI) to fast (2800 DPI). Speed can be identified by the LED lights as shown. Hold Cursor speed (button **A**) for 8 seconds to default settings.



Navigation bar click force adjustment

Click force refers to the level of resistance when clicking the navigation bar. To adjust click force, press and hold both button **A** (Cursor speed) and button **F** (Left-click) for two seconds, the LED light will show the current click force setting. While continuing to hold button **A**, release button **F** and use button **H** (scroll wheel) to change click force settings. Release button **A** to select click force.

To disable the navigation bar click function, adjust the click tension until all LEDs are illuminated.

Navigation bar click volume adjustment

The navigation bar has 6 different click volume settings. To change the click volume, press and hold button **A** (Cursor speed) and button **G** (Right-click) for two seconds, the LED light will show the current click volume setting. To adjust click volume continue to hold button **A** and release button **G**, then move button **H** (Scroll wheel) up/down to adjust the click volumen. Release button **A** to confirm.

To disable the navigation bar click volume, adjust the click volume until alle LEDs are illuminated.

Keyboard risers

Before using your SliderMouse Pro, please take a moment to adjust your keyboard.

If you are using other keyboards than Contour's Balance Keyboard, you can use the Keyboard risers to achieve the desired keyboard height and angle. Simply place the Keyboard risers under your keyboards feet - as the keyboard was lying on the table.

For a proper ergonomic position the front edge of the the keyboard should be as close to the Navigation bar as possible. We recommend to use negative tilt helping you to hold a neutral wrist position and decreasing the extension of your fingers.



Negative tilt



Neutral flat



Neutral elevated



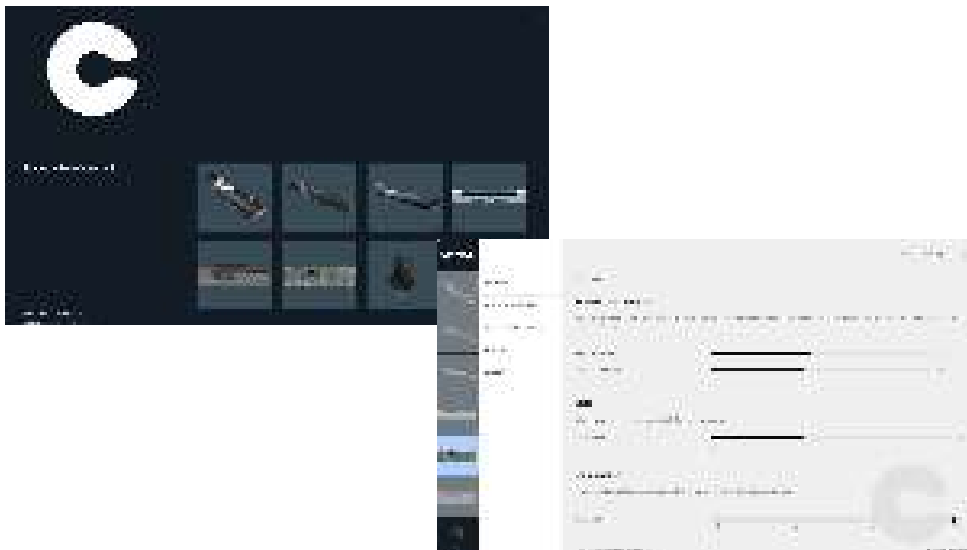
Postive tilt



Software driver

All Contour's ergonomic products are plug-and-play. If you want to customize your SliderMouse Pro, we recommend to download the free driver available at:

contourdesign.com/drivers



Contour

Contour Design Nordic A/S
Nyropsgade 41-43, 1. floor
DK-1602 Copenhagen V, Denmark
Phone: +45 70 27 02 27
Email: info@contourdesign.com

Contour Design, Inc.
10 Industrial Drive
Windham, New Hampshire 03087, USA
Phone: (603) 893-4556
Email: ergoinfo@contourdesign.com

For more information please visit:
www.contourdesign.com

Tested to comply with FCC and
IC standards.



FCC Statement

Changes or modifications not expressly approved by the party responsible for compliance could void the user's authority to operate the equipment.

This equipment has been tested and found to comply with the limits for a Class B digital device, pursuant to Part 15 of the FCC Rules. These limits are designed to provide reasonable protection against harmful interference in a residential installation. This equipment generates uses and can radiate radio frequency energy and, if not installed and used in accordance with the instructions, may cause harmful interference to radio communications.

However, there is no guarantee that interference will not occur in a particular installation. If this equipment does cause harmful interference to radio or television reception, which can be determined by turning the equipment off and on, the user is encouraged to try to correct the interference by one or more of the following measures:

- Reorient or relocate the receiving antenna.
- Increase the separation between the equipment and receiver.
- Connect the equipment into an outlet on a circuit different from that to which the receiver is connected.
- Consult the dealer or an experienced radio/TV technician for help.

This device complies with part 15 of the FCC rules. Operation is subject to the following two conditions (1) this device may not cause harmful interference, and (2) this device must accept any interference received, including interference that may cause undesired operation.

IC Statement

This device complies with Industry Canada's licence-exempt RSSs. Operation is subject to the following two conditions:

1. This device may not cause interference; and
2. This device must accept any interference, including interference that may cause undesired operation of the device.

The term "IC:" before the certification/registration number only signifies that the Industry Canada technical specifications were met. This product meets the applicable Industry Canada technical specifications.

Warranty

If there is a functional defect due to faulty manufacturing, we will replace the product. This warranty does not cover damage that results from misuse of the product.

Attention!

If you attempt to dismantle your "SliderMouse Pro" you will invalidate your warranty.