



Display Pilot User Manual

LCD Monitor Software

AQCOLOR®
Colors You Can Trust

Copyright and disclaimer

Copyright

Copyright 2022 BenQ Corporation. All rights reserved. No part of this publication may be reproduced, transmitted, transcribed, stored in a retrieval system or translated into any language or computer language, in any form or by any means, electronic, mechanical, magnetic, optical, chemical, manual or otherwise, without the prior written permission of BenQ Corporation.

All other logos, products, or company names mentioned in this manual may be the registered trademarks or copyrights of their respective companies, and are used for informational purposes only.

Disclaimer

BenQ Corporation makes no representations or warranties, either expressed or implied, with respect to the contents hereof and specifically disclaims any warranties, merchantability or fitness for any particular purpose. Further, BenQ Corporation reserves the right to revise this publication and to make changes from time to time in the contents hereof without obligation of BenQ Corporation to notify any person of such revision or changes.

This document aims to provide the most updated and accurate information to customers, and thus all contents may be modified from time to time without prior notice. Please visit the [website](#) for the latest version of this document.




It is the sole responsibility of the user if problems (such as data loss and system failure) occurred due to non-factory installed software, parts, and/or non-original accessories.

(Applicable for flicker-free models only) The performance of flicker-free may be affected by external factors such as poor cable quality, unstable power supply, signal interference, or poor grounding, and not limited to the above mentioned external factors.

Servicing (Windows only)

Should you have any queries about the software after reading the document, contact the customer support from **System > Information > Technical Support**.

Typographics

Icon / Symbol	Item	Meaning
	Warning	Information mainly to prevent the damage to components, data, or personal injury caused by misuse and improper operation or behavior.
	Tip	Useful information for completing a task.
	Note	Supplementary information.

In this document, the steps needed to reach a menu are shown in condensed form, for example: **System > Information**.

Table of contents

Copyright and disclaimer.....	2
Copyright.....	2
Disclaimer.....	2
Servicing (Windows only).....	2
Typographics.....	2
Introduction	4
Compatible operating systems	4
Installing and launching the Display Pilot software.....	4
Exiting Display Pilot	4
Overview	5
Adjusting the settings.....	6
Configuring Preferences	6
Color setting synchronization between computer and monitor (ICCsycn)(selected models only).....	6
Applying and customizing a color mode.....	7
Selecting a color mode from the menu (Color Mode)	7
Customizing and restoring a color mode	7
Switching color modes with keyboard shortcuts.....	8
Switching color modes from the context menu (Windows only).....	8
Switching color modes from the system tray (Windows only)	8
Working with two color modes simultaneously (DualView)	9
Switching color modes for DualView with keyboard shortcuts	9
Changing an input.....	10
Changing an input source from the menu.....	10
Switching input source with keyboard shortcuts	10
Rotating your screen.....	10
Manually rotate the screen (Screen Pivot).....	10
Automatically rotate the screen (Auto Pivot)(selected models only).....	10
Working with two or more video sources (PIP/PBP)	10
Managing the layout of multiple windows (Desktop Partition)	11
Creating a window layout.....	12
Customizing each application's color mode (Application Mode)	13
For Windows	13
For both Windows and Mac.....	13
Placing your design accurately (Print Assist)	14
System information and technical support.....	15
Resetting the system.....	15
Checking for a system update automatically	15

Introduction

Display Pilot is a software utility that allows for quick accurate tuning of the display with the ability to easily save and use monitor configurations that are best suited for you. All adjustments are controlled via software to eliminate the need to use the monitor on-screen displays (OSD).

- **Display Pilot** scans the connected display to determine which features are supported. The list of supported features displayed in the application will vary based on the monitor model and input selected. Therefore, not all controls and features described in this document may appear in the application.
 - Images in this document are for reference only and may look different according to the operating system of your computer. The user interface may subject to change without prior notice.
-

Compatible operating systems


- Windows 7 or above operating systems
- MacOS Mojave 10.14

Installing and launching the **Display Pilot** software

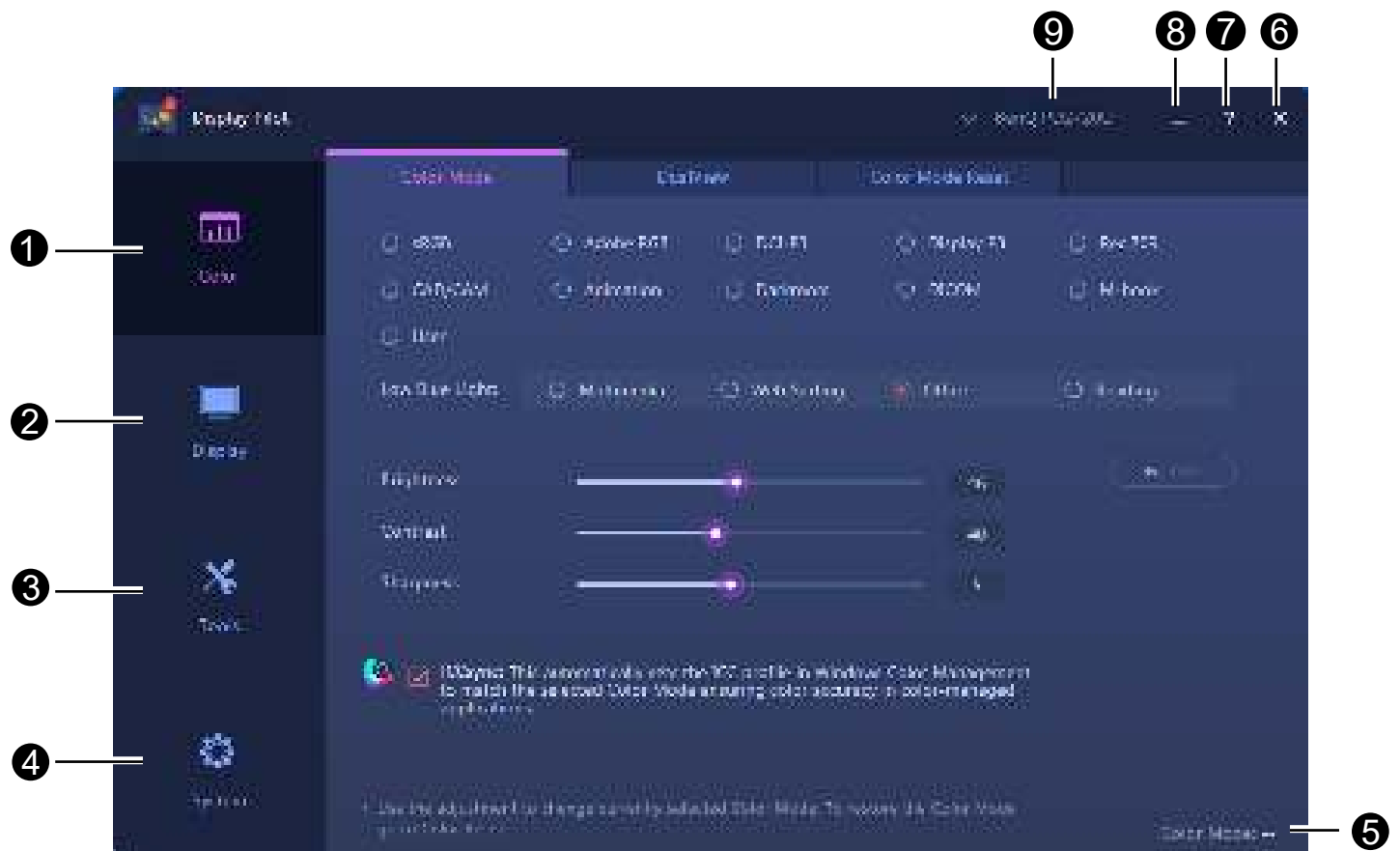
1. Visit the local website from www.BenQ.com > the purchased model > the **Support** tab > the **Software** tab to download the **Display Pilot** software.
 2. (On Windows) Click the file just downloaded and follow the on-screen instructions to complete the installation. Choose your language preference for installation process. Check **Launch Display Pilot** in last step before you finish the installation. Now the software runs in the background and can be accessed through the **Start** menu or the system tray at the bottom-right corner of the screen.
(On Mac) Click the file just downloaded from **Downloads** and install and launch the application properly.
-

- Choose your language preference for installer in the beginning of installation. Once the software is installed, the interface follows the operating system language setting and cannot be changed from the software.
-

Exiting **Display Pilot**

1. Right-click the  icon from the system tray at the bottom-right or top-right corner of the screen.
2. (On Windows) Click **Exit** to close the software.
(On Mac) Click **Quit** to close the software.

Overview



No.	Name	Descriptions
①	Color menu	Switches to the color settings. <ul style="list-style-type: none"> Color setting synchronization between computer and monitor (ICCsyntax) (selected models only) on page 6 Selecting a color mode from the menu (Color Mode) on page 7 Customizing and restoring a color mode on page 7 Working with two color modes simultaneously (DualView) on page 9
②	Display menu	Switches to different input signals, or pivot, PIP, and PBP settings. <ul style="list-style-type: none"> Changing an input on page 10 Rotating your screen on page 10 Working with two or more video sources (PIP/PBP) on page 10
③	Tools menu	Access to extended functions to work with multiple application windows and more. <ul style="list-style-type: none"> Managing the layout of multiple windows (Desktop Partition) on page 11 Customizing each application's color mode (Application Mode) on page 13 Switching color modes with keyboard shortcuts on page 8 Switching color modes for DualView with keyboard shortcuts on page 9 Switching input source with keyboard shortcuts on page 10 Placing your design accurately (Print Assist) on page 14
④	System menu	Shows the display status and provides access to adjust preferences. <ul style="list-style-type: none"> Configuring Preferences on page 6 System information and technical support on page 15 Resetting the system on page 15
⑤	Current color mode	Shows the current color mode of the connected display.
⑥	Close button	Closes the window while the application is still running in background.
⑦	Information button	Displays the information on the current function tab.
⑧	Minimize button	Minimizes the window.

No.	Name	Descriptions
9	Connected display	Shows the model name of the connected display.

Adjusting the settings

Before you start, you might want to go through some adjustments.

Configuring Preferences

1. Go to **System > Preferences** to decide the ways to access the program.
2. Enable the desired functions.

On Windows

Option	Descriptions
Run at startup	Runs the program at the startup process of the operating system.
Always on top	Sets to let the program window always on top of other windows.
Right click menu	Sets to access the program from the context menu when right-clicking on the desktop.
Shortcut on desktop	Sets a program shortcut on the desktop.
Application Mode messaging	Enables the messaging function in Application Mode . A message displays to inform you of the change of color mode when switching from one application to another.
Auto update notice	Sets to check if an update version is available. Internet connection is required.

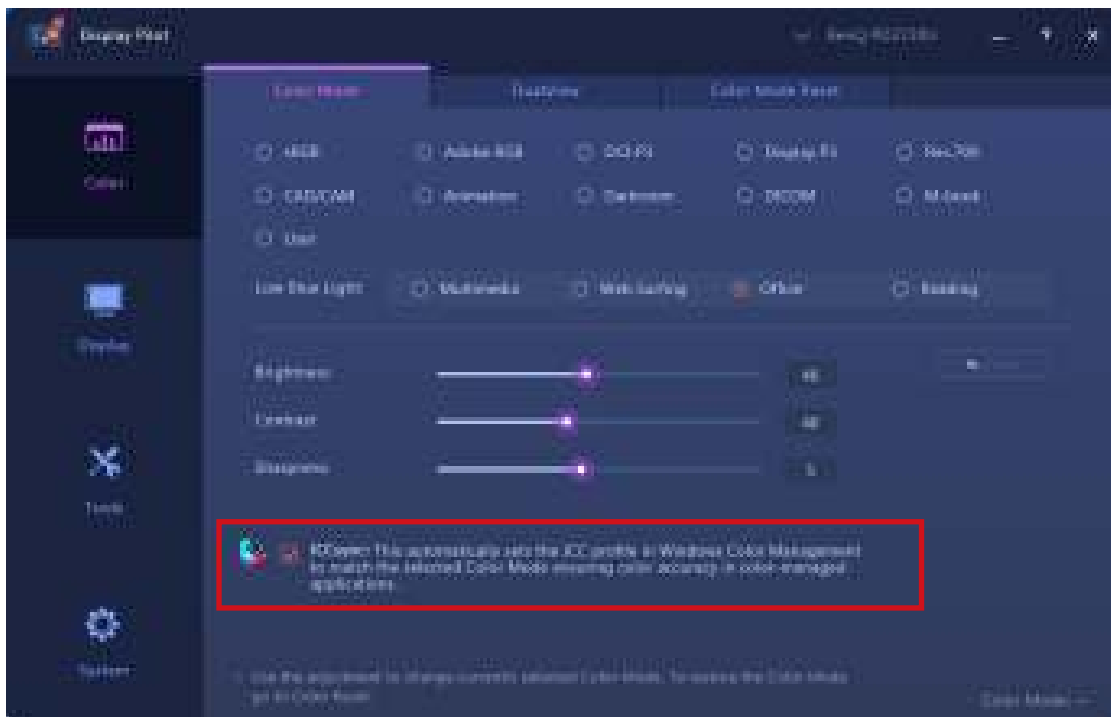
On Mac

Option	Descriptions
Run Display Pilot when computer is on	Runs the program at the startup process of the operating system.
Auto update notice	Sets to check if an update version is available. Internet connection is required.

Color setting synchronization between computer and monitor (**ICCsinc**)(selected models only)

The computer's color profile (ICC profile) may not best suit your monitor. If you want to make sure to obtain the accurate color matching representation, change the computer's ICC profile to ensure the computer works better with the monitor. With the ICCsync feature in **Display Pilot**, the adjustment is done with one click.

1. Go to **Color > Color Mode**.
2. Check **ICCsinc** to enable the synchronization.



After the **ICCsyntax** function is enabled, the synchronization is performed automatically whenever a new color mode is applied to ensure consistent and accurate color matching representation between the monitor and the computer's color management system.

- Alternatively, you can perform the ICC synchronization manually. Visit www.BenQ.com > the purchased model > the **Support** tab > the **User Manual** tab to access the **ICC Profile Installation Guide** for instructions.
- If multiple monitors connected to the computer have been rearranged, the software may not detect the new monitor arrangement and sync properly. Before you perform ICC synchronization, unplug and plug the video cables so the system can identify the correct arrangement.
- Availability of ICCsync function varies by model. Visit www.BenQ.com > the purchased model > the **Specifications** tab to see if ICCsync is supported.

Applying and customizing a color mode

You are provided with several ways to apply a color mode.

- Available color modes vary by model. To find out the description of each color mode, refer to the user manual of the connected monitor.
- If your monitor is HDR-compatible, HDR mode will not be displayed in any of the **Color Mode** list. However, if HDR content is connected, the monitor switches to HDR mode automatically.

Selecting a color mode from the menu (**Color Mode**)

1. Go to the **Color > Color Mode**.
2. All except the HDR color mode (if supported) available for the connected monitor are displayed. Click one mode to apply immediately.

Customizing and restoring a color mode

- You can customize the brightness, contrast, or sharpness settings of a color mode from **Color Mode**. To adjust a selected color mode, simply draw the adjustment bars from the window, or input a preferred value for each setting. The setting will take effect immediately.
- To undo the changes just made to a color mode, click **Undo** on the right.
- If more than one color mode has been customized and you wish to restore to the default factory settings all at once, go to the **Color Mode Reset** tab. Select the desired color modes and click **Reset**.

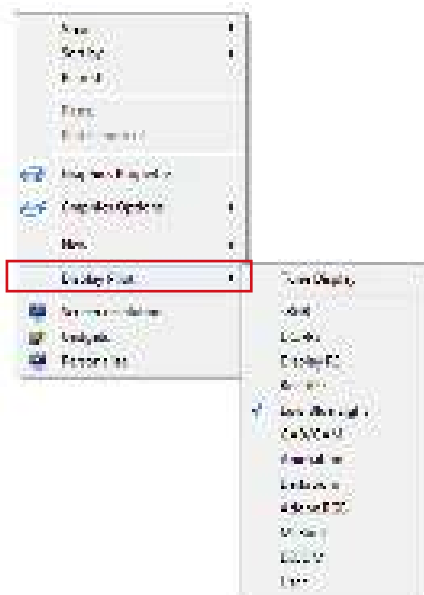
Switching color modes with keyboard shortcuts

1. Go to **Tools > Keyboard Hotkey**.
2. Move the slider to switch on **Color Mode**.
3. Choose up to 3 color modes from the list for hotkey switch.
4. A key combination is pre-defined for hotkey switch. Simply press the keys to cycle through the selected options. If you prefer to change the key combination, click **Edit** on the right to customize the setting.
(On Windows) The hotkey shortcut consists of 3 keys, and the first 2 keys need to be modifier keys selected from **Shift**, **Ctrl** or **Alt** to make a valid hotkey shortcut. The third key could be any number or alphabet key.
(On Mac) The hotkey shortcut consists of 3 keys, and the first 2 keys need to be modifier keys such as **⇧**, **control**, **option** or **command** to make a valid hotkey shortcut. The third key could be any number or alphabet key.

 If you have enabled **Desktop Color Mode** from **Tools > Application Mode**, the color setting selected from **Color Mode** will be applied whenever you click on the desktop.


Switching color modes from the context menu (Windows only)

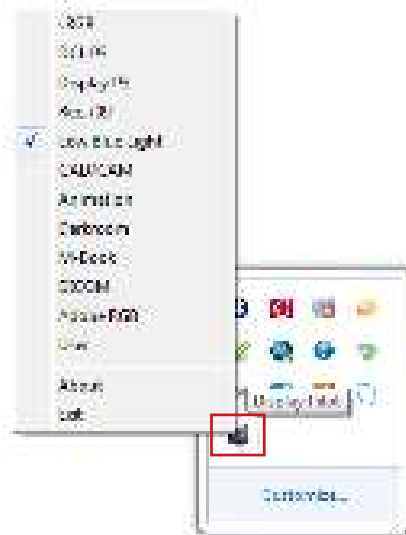
1. Go to **System > Preferences**.
2. Enable **Right click menu**.
3. Right-click on the desktop of your computer and select **Display Pilot**. Select one mode to apply.



 If you have enabled **Desktop Color Mode** from **Tools > Application Mode**, the color setting selected from **Color Mode** will be applied whenever you click on the desktop.

Switching color modes from the system tray (Windows only)

1. Right-click on the  icon from the system tray at the bottom-right corner of the screen.
2. Select one mode to apply.



 If you have enabled **Desktop Color Mode** from **Tools > Application Mode**, the color setting selected from **Color Mode** will be applied whenever you click on the desktop.

Working with two color modes simultaneously (**DualView**)

DualView helps improve your image editing efficiency by showing an image of two different color modes side-by-side.


1. Go to **Color > DualView**.
2. Move the slider to switch on **DualView**. The screen is divided into two windows and the selected color mode from **Color > Color Mode** is applied to the left window.
3. Choose one color mode from the options for the right window. The setting will take effect immediately.



Switching color modes for **DualView** with keyboard shortcuts

1. Go to **Tools > Keyboard Hotkey**.
2. Move the slider to switch on **DualView**.
3. Choose up to 3 color modes from the list for hotkey switch.
4. A key combination is pre-defined for hotkey switch. Simply press the keys to cycle through the selected options. If you prefer to change the key combination, click **Edit** on the right to customize the setting.

(On Windows) The hotkey shortcut consists of 3 keys, and the first 2 keys need to be modifier keys selected from **Shift**, **Ctrl** or **Alt** to make a valid hotkey shortcut. The third key could be any number or alphabet key.

(On Mac) The hotkey shortcut consists of 3 keys, and the first 2 keys need to be modifier keys such as , **control**, **option** or **command** to make a valid hotkey shortcut. The third key could be any number or alphabet key.


Changing an input

Changing an input source from the menu

1. Connect the video cable properly between the monitor and the video source. Available inputs vary by model.
2. To change an input from **Display Pilot**, go to **Display > Display**.
3. Select the desired input from **Input**. If the video cable is properly connected, the screen will display the new source.

Switching input source with keyboard shortcuts

1. Go to **Tools > Keyboard Hotkey**.
2. Move the slider to switch on **Input**.
3. Choose the input sources from the list for hotkey switch. Available inputs vary by model.
4. A key combination is pre-defined for hotkey switch. Simply press the keys to cycle through the selected options. If you prefer to change the key combination, click **Edit** on the right to customize the setting.
(On Windows) The hotkey shortcut consists of 3 keys, and the first 2 keys need to be modifier keys selected from **Shift**, **Ctrl** or **Alt** to make a valid hotkey shortcut. The third key could be any number or alphabet key.
(On Mac) The hotkey shortcut consists of 3 keys, and the first 2 keys need to be modifier keys such as **⇧**, **control**, **option** or **command** to make a valid hotkey shortcut. The third key could be any number or alphabet key.

 If you have switched the input signal to another computer, you cannot control the monitor input and switch the signal back from the original computer. To switch inputs easily from one computer to another, please have **Display Pilot** installed on all the connected computers and set the same hotkey shortcut for input switch.

Rotating your screen


You can manually or automatically rotate the screen image to go with the rotated monitor.

Manually rotate the screen (**Screen Pivot**)

1. Go to **Display > Display**.
2. Select one screen direction. The setting will take effect immediately.
3. Rotate your monitor to the same direction.

Automatically rotate the screen (**Auto Pivot**)(selected models only)

1. Go to **Display > Display**.
2. Move the slider to switch on **Auto Pivot**. The screen goes with the monitor when being rotated.

 Available only when there is a built-in rotation sensor on the monitor. Visit www.BenQ.com > the purchased model > the **Specifications** tab to see if **Auto Pivot** is supported.

Working with two or more video sources (**PIP/PBP**)

The Picture-in-Picture (PIP) mode displays the main video source on the screen while the second source in an inset window. The Picture-by-Picture (PBP) mode allows to display images from two or more video sources side-by-side.

1. Make sure you have enough video sources and cables are connected properly between the monitor and the video sources.
2. Go to **Display > PIP/PBP**.
3. Move the slider to switch on **PIP/PBP**.
4. Select the desired function. Different options are available by function.

Function	Descriptions
Picture in Picture	This function requires 2 video sources. Determine the main and the sub sources, the sub image size and position.

Function	Descriptions
Picture by Picture	This function requires 2 video sources. Select the preferred source for each window.
Picture by Picture x4	This function requires 4 video sources. Select the preferred source for each window.

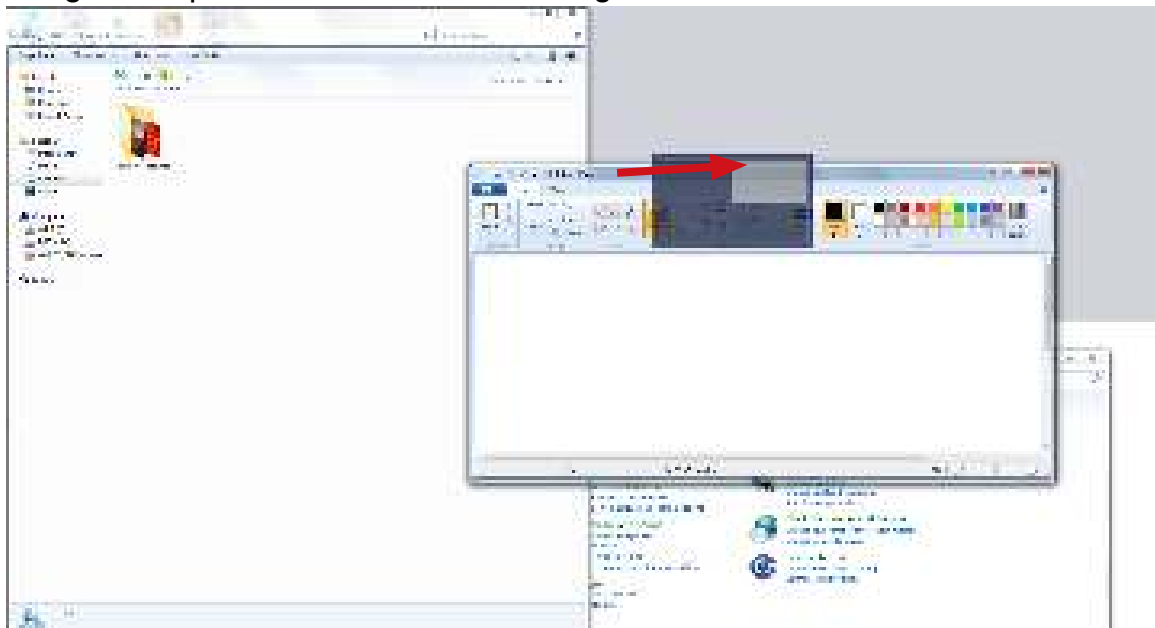
Managing the layout of multiple windows (**Desktop Partition**)

Select a preferred layout and arrange multiple application windows as desired. You can manage to show up to 4 windows simultaneously.

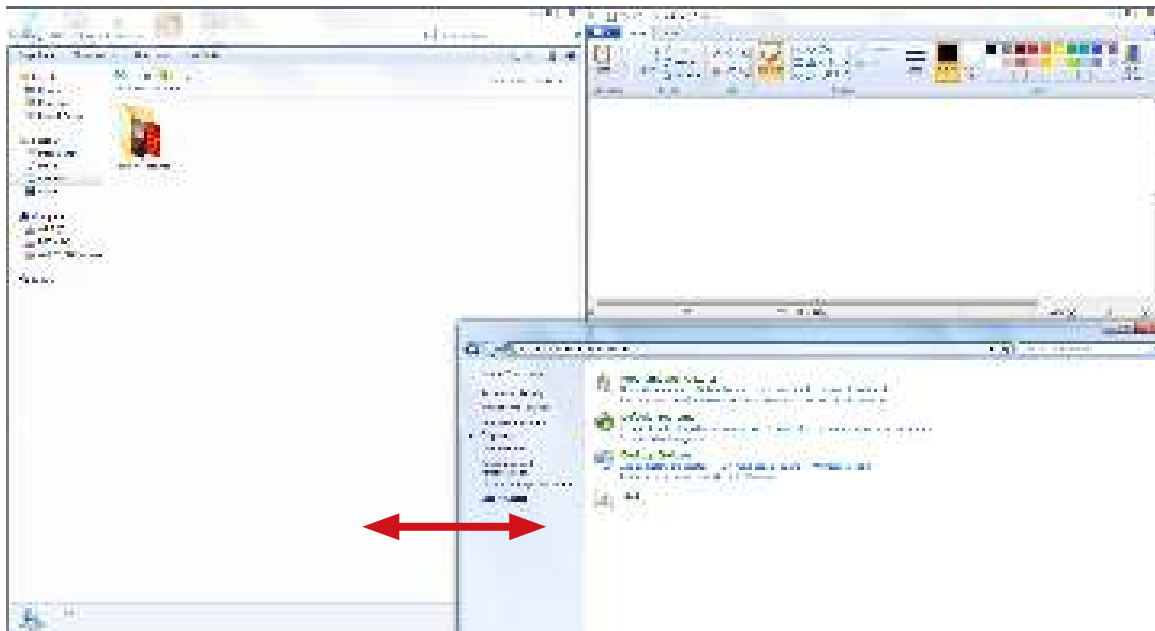
1. Go to **Tools > Desktop Partition**.
2. Select one of the preferred layout.



3. Go to one of the application windows and drag to move it. While a small layout appears as you move the window, drag and drop the window to the desired region.

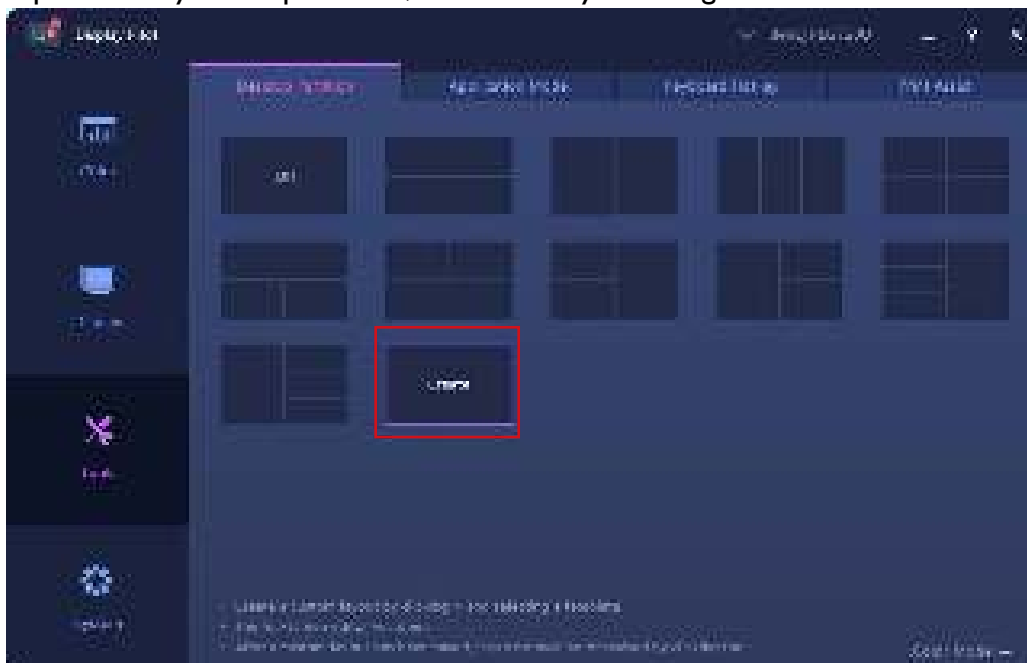


4. The window is then resized and fits into the region. Repeat Step 3 until all windows are organized as planned and are displayed simultaneously.
5. If you wish to customize the partition again, drag and drop the boundary of a window.




Creating a window layout

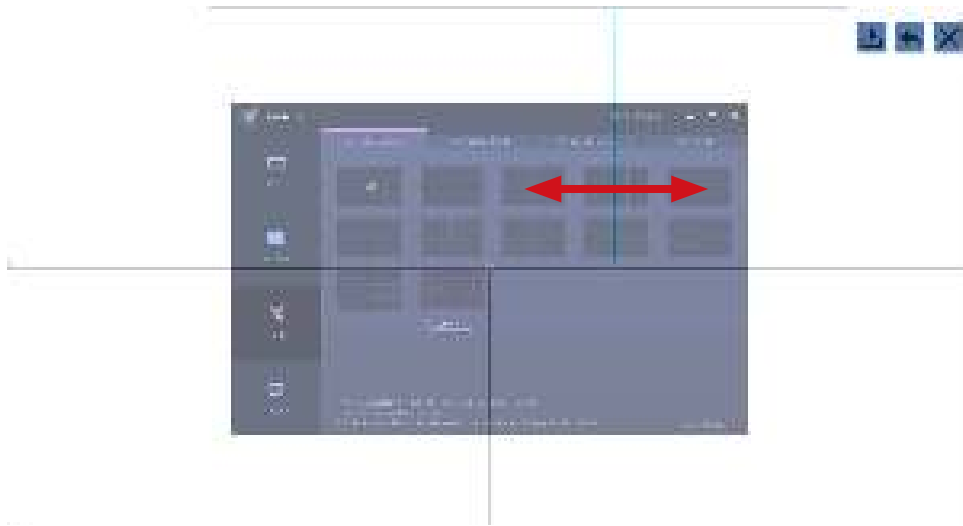
1. If none of the provided layouts is preferred, create one by selecting **Create**.



2. Select a template and click **Adjust** for editing.



3. Move the cursor to one of the partition lines (boundaries of windows) until it turns to blue. Drag and drop the line to adjust the layout. After the customization is done, click  on the upper-right corner of the screen to save the changes. The customized layout is then created for future use and is available from the layout list.



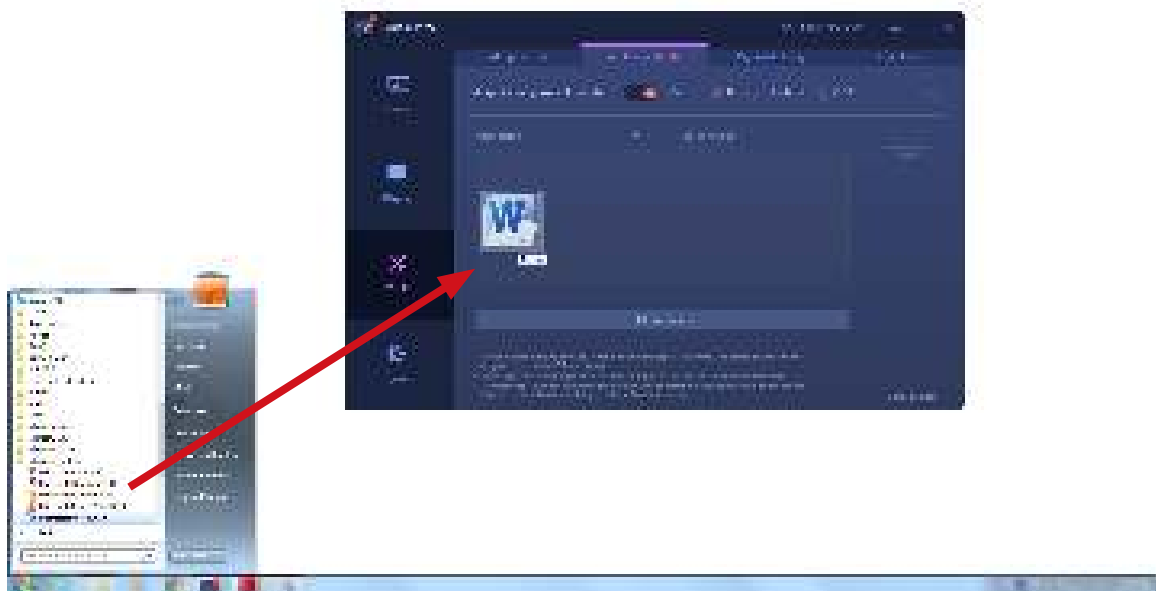
4. If you wish to delete the customized layout, click **x** on the upper-right corner of the layout thumbnail.

Customizing each application's color mode (**Application Mode**)

Assign one color mode to an application, so when the application is launched and brought to the front, the preset color mode is applied automatically.

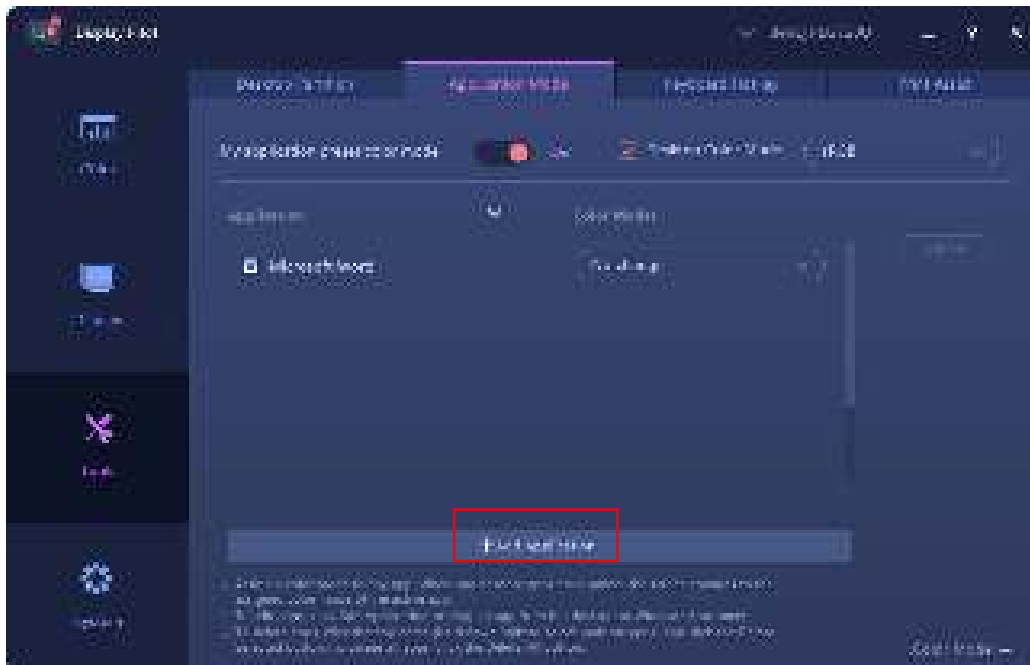
For Windows

1. Go to **Tools > Application Mode**.
2. Move the slider to switch on **My application preset color mode**.
3. Check **Desktop Color Mode** if you wish to return to the default desktop color mode whenever you click on the desktop. This keeps the screen from changing constantly during application switch.
4. Go to the **Start > All Programs** menu on your computer, drag a selected application to the **Display Pilot** window and drop it, the selected application is added to the list.




For both Windows and Mac

1. Go to **Tools > Application Mode**.
2. Move the slider to switch on **My application preset color mode**.
3. (Windows only) Check **Desktop Color Mode** if you wish to return to the default desktop color mode whenever you click on the desktop. This keeps the screen from changing constantly during application switch.
4. Click **Add Application** from the **Display Pilot** window and look for the *.exe file of the desired application.



5. From the application list on **Display Pilot**, set one color mode for each application from the drop-down menu. Once the application is launched and the window is brought to the front, the preset color mode is applied immediately.
6. If you wish to remove an application from the list, select it and click **Delete** on the right.

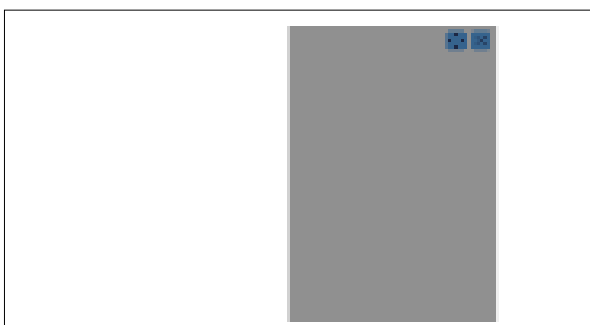
 (Windows only) If you wish to be notified of the color mode change in **Application Mode**, enable the messaging function from **System > Preferences > Application Mode messaging**.

Placing your design accurately (**Print Assist**)

As you can zoom in and out easily on the screen, you may need some measurement tool to help know the dimension of your design and to place the illustrations accurately. Now you are provided with **Print Assist** which is helpful by showing the range of some standard print sizes or the grid lines. The range and the grid lines are for preview only and will not be printed.



1. Go to **Tools > Print Assist**.
2. Move the slider to switch on the function.
3. Under **Grid**, select to show the range of one of the standard print sizes or grid lines of different measurement increments.


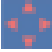

Range of a print size



Grid lines



4. Under **Line Color**, select a color for grid lines.
5. Under **Line Weight**, select the thickness of grid lines.
6. (On Windows) Move the range by dragging the  icon on the screen. Disable the **Print Assist** function by clicking the  icon.

(On Mac) Click on the  icon and the arrows turn orange, which means you can move the range now. Move the range by dragging it, and then click  once it is moved to a desired place. Disable the **Print Assist** function by clicking the  icon.

System information and technical support

To find out the system information and current settings, go to **System > Information**.

(Windows only) Should you need technical support, go to **System > Information > Technical Support**.

Note that network connection is required.

Resetting the system

If you prefer to restore the system to factory default settings, go to **System > Information > Factory Reset**.

All the customized changes will be reset.



To reset color modes only, go to **Color > Color Mode Reset**.

Checking for a system update automatically

1. Make sure your computer is connected to the Internet.
2. Go to **System > Preferences > Auto update notice** and move the slide to switch on the function. The system will then check for an update automatically when it is launched.
3. If a software update is available, you will be prompted to download and/or to install the update.