

1. Disassembly Procedures:

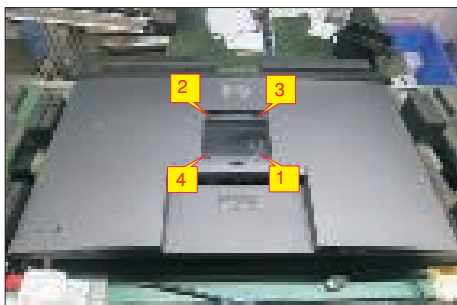
S1 Turn off power..



S2 Unplug external cables(power cable and video cable) from the monitor.

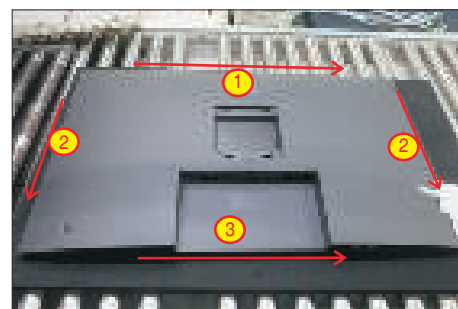


S3 Remove stand from the product.(Press the stand release button, lift the stand up and away from the monitor)

S4 Use a Philips-head screwdriver to remove 4pcs screws for unlocking mechanisms.
(No.1~4 screw size=M4x11; Torque=11±1kgfxcmm)

S5

Wedge your fingers between rear cover and the middle bezel on the corners of the top side of the monitor to release the rear cover, then use one hand to press the middle bezel, the other hand to pull up carefully the rear cover in order of arrow preference for unlocking mechanisms of rear cover.



S6

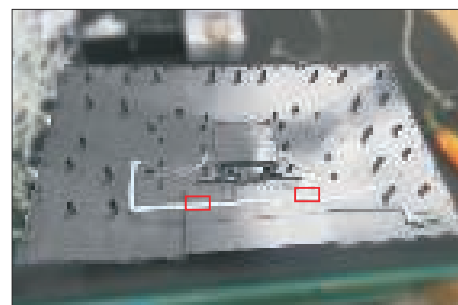
Lift the rear cover up carefully. Disconnect the joystick key cable from the connector of the interface board, and then remove the rear cover and put it aside for later disassembling.

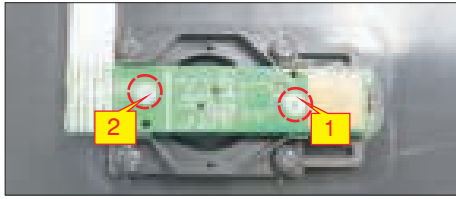


S7

Use a Philips-head screwdriver to remove 2pcs screw for unlocking the key board, then tear off the tapes and release the key board.

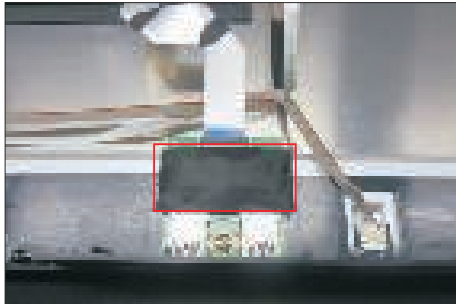
(No.1~2 screw size=M2x3.3, Torque=0.8~1kgfxcmm)





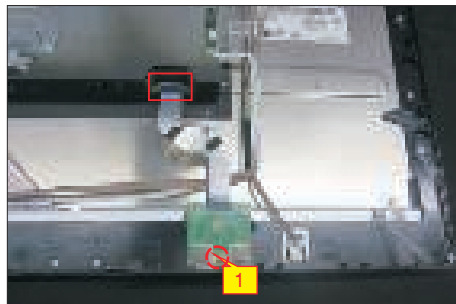
S8

Tear off 4pcs aluminum foil and 1pcs acetate tape as the picture below shown.



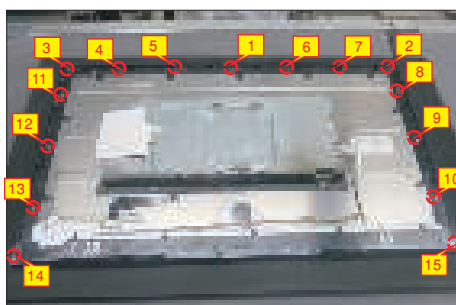
S9

Use a Philips-head screwdriver to remove one screw for unlocking the USB board, then disconnect the USB FFC cable and remove away the USB board.
(No.1 screw size=M3x4.5, Torque=4±0.5kgfxcn)



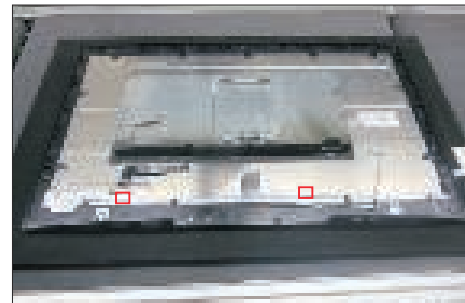
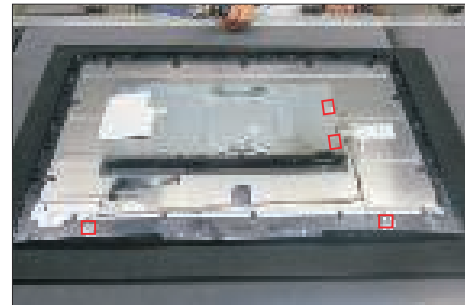
S10

Use a Philips-head screwdriver to remove 15(13+2)pcs screws for unlocking the middle bezel.
(No.1~13 screw size=M3x5, Torque=5±0.5kgfxcn
No.14~15 screw size=M2x3.3, Torque=0.8~1.2kgfxcn)



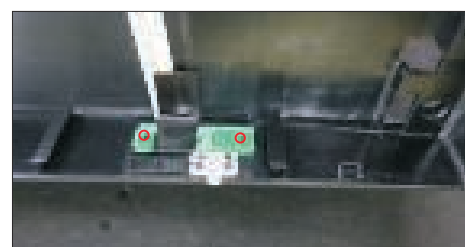
S11

Disconnect the panel lamp from the connectors of the panel and interface board and then put it aside.
Disconnect the LED cable from the connector of the interface board, then release the LED cable by tearing off the 2pcs tapes.



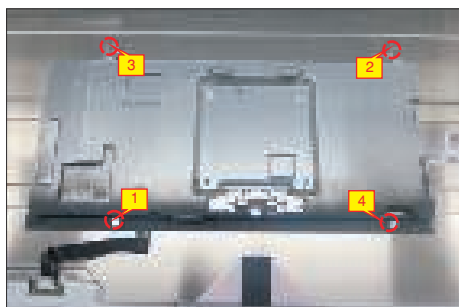
S12

Take away the middle bezel, and put it on a fixture, then tear off the mylar tape for releasing the LED board .



S13

Use a Philips-head screwdriver to remove 4pcs screws for unlocking the bracket with panel module.
(No.1~4 screw size=M3x4, Torque=5±0.5kgfxcM)



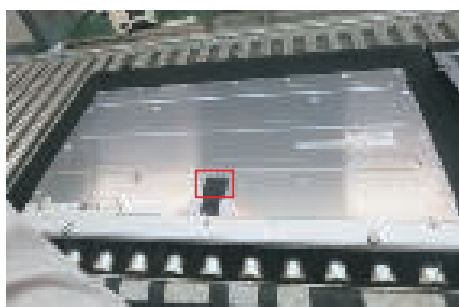
S14

Lift up the panel for releasing the front bezel away from the panel.



S15

Disconnect the EDP cable away from the connectors of the panel, and then remove the bracket and put it on a cushion. Tear off the acetate tape of the panel.



S16

Remove the Mylar tape from the hooks of the bracket.



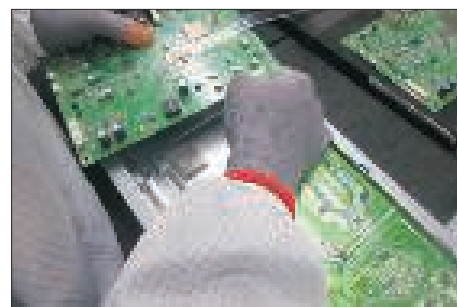
S17

Use a Philips-head screwdriver to remove 8pcs screws for interface board and power board.
(No.1 screw size=M4x8, Torque=7±1kgfxcM;
No.2~8 screw size=M3x7.5, Torque=7±1kgfxcM)



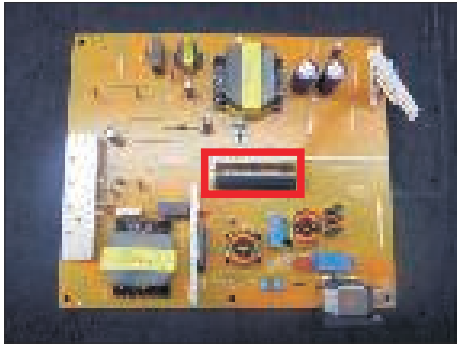
S18

Remove the power board board and interface board from the bracket chassis module carefully, and then disconnect all of the cables.

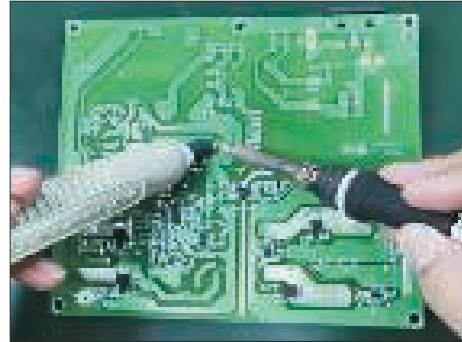


S19

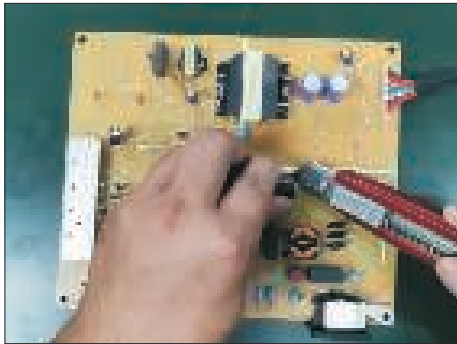
Remove electrolyte capacitors (red mark) from printed circuit boards.



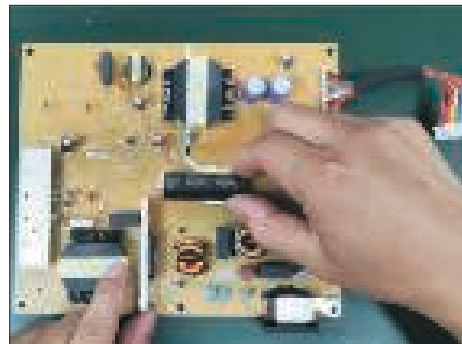
S19-4 Take out bulk cap. pin solder with soldering iron and absorber.



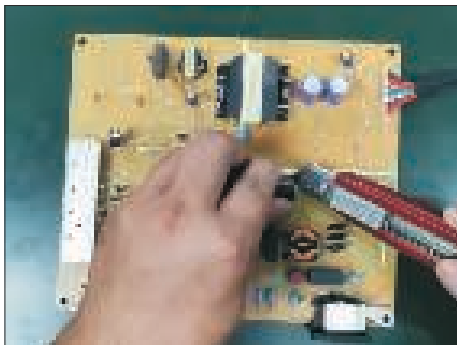
S19-1 Cut the glue between bulk cap. and PCB with a knife.



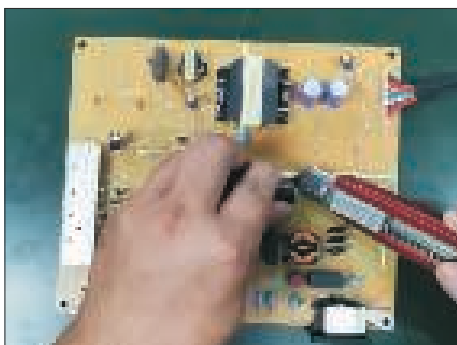
S19-5 Lift the bulk cap. up and away from the PCB.



S19-2 Ensure cutting path within the glue, don't touch bulk cap. or PCB.



S19-3 Cut into the bottom of bulk cap. and pull it up carefully.



2. Product material information

The following substances, preparations, or components should be disposed of or recovered separately from other WEEE in compliance with Article 4 of EU Council Directive 75/442/EEC.

Capacitors / condensers (containing PCB/PCT)	No used
Mercury containing components	No used
Batteries	No used
Printed circuit boards (with a surface greater than 10 square cm)	Product has printed circuit boards (with a surface greater than 10 square cm)
Component contain toner, ink and liquids	No used
Plastic containing BFR	No used
Component and waste contain asbestos	No used
CRT	No used
Component contain CFC, HCFC, HFC and HC	No used
Gas discharge lamps	No used
LCD display > 100 cm ²	Product has an LCD greater than 100 cm ²
External electric cable	Product has external cables
Component contain refractory ceramic fibers	No used
Component contain radio-active substances	No used
Electrolyte capacitors (height > 25mm, diameter > 25mm)	Product has electrolyte capacitors (height > 25mm, diameter > 25mm)

3. Tools Required

List the type and size of the tools that would typically can be used to disassemble the product to a point where components and materials requiring selective treatment can be removed.

Tool Description:

- Screwdriver (Phillip head) #1
- Screwdriver (Phillip head) #2
- Penknife
- Soldering iron and absorber