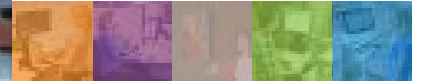
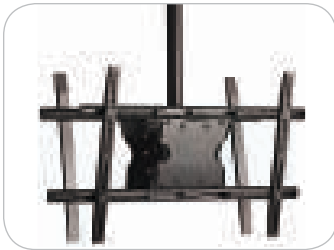
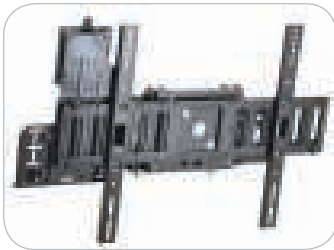
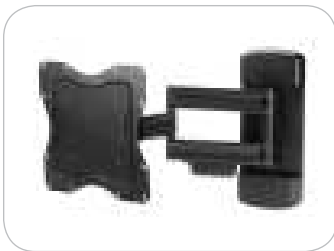




Digital signage: bring the message to your audience

Boost profits and increase traffic with Ergotron digital signage mounting and mobility solutions



Mounting and
Mobility Solutions
for Your Entire Facility

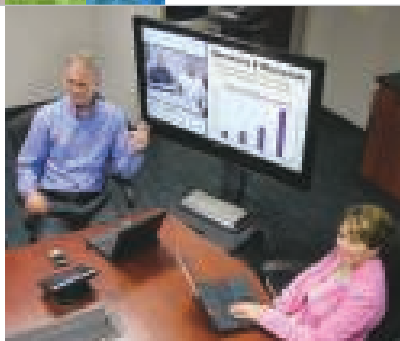


Little effort, big impact. That's the value from Ergotron.

Whether communicating powerful, attention-grabbing graphics or streaming video, the appeal of digital signage is in its quick and effortless ability to manipulate content in real-time to influence audience behavior. However, one of the keys to implementing a powerful message is effective positioning. This is where Ergotron can help. Our innovative line of display mounts and mobile workstations move content to the audience, creating a powerful impact.



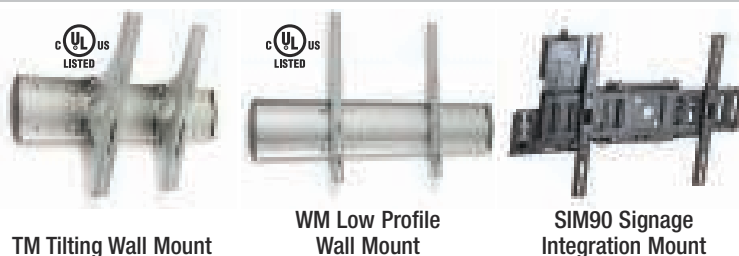
Carts



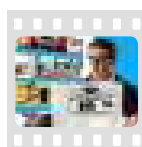
Neo-Flex Mobile MediaCenter: rotate your screen for portrait/landscape viewing.



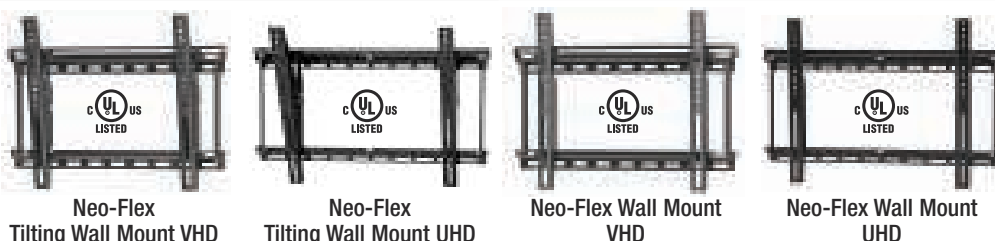
Part # (color)	Light Duty 24-190-085 (black)	Very Heavy Duty 24-191-085 (black)	Ultra Heavy Duty 24-192-085 (black)
Optional Accessories: Camera Shelf Kit 97-491-085; 660/700/800 mm Kit 97-489; VESA CPU Kit 97-527-009			
Typical LCD Size	27–55"	37–60"	50–70"
Weight Capacity	25–50 lbs (11.4–22.7 kg)	50–90 lbs (22.7–40.9 kg)	90–120 lbs (40.9–54.4 kg)
Lift	20" (51 cm)	20" (51 cm)	20" (51 cm)
Tilt	20°	20°	20°
Rotation	90° Portrait to landscape screen rotation. See website for details	90° Portrait to landscape screen rotation. See website for details	90° Portrait to landscape screen rotation. See website for details
VESA	MIS-D/E/F See website for details	MIS-D/F See website for details	MIS-D/F See website for details



Part # (color)	60-603-003 (silver) XL 60-601-003 (silver)	60-604-003 (silver) XL 60-602-003 (silver)	60-600-009 (black)
Typical LCD Size	32–65" XL 42–65"	32–65" XL 42–65"	≥ 32"
Weight Capacity	≤ 175 lbs (79,4 kg)	≤ 175 lbs (79,4 kg)	≤ 115 lbs (52,2 kg)
Tilt	20°	—	15°
Rotation	—	—	90° Portrait to landscape screen rotation. See website for details
VESA	MIS-D/E/F See website for details	MIS-D/E/F See website for details	MIS-F See website for details
Depth	3.5" (8,9 cm)	1.25" (3,2 cm)	4.8" (12,1 cm)



See the "Bracketology Simplified" movie
<http://movies.ergotron.com>



Part # (color)	60-613 (black)	60-612 (black)	60-615 (black)	60-614 (black)
Optional UHD Accessory: NF VESA Adaptor 97-590 (black)				
Typical LCD Size	23–42"	37–63"	23–42"	37–63"
Weight Capacity	≤ 80 lbs (36,3 kg)	≤ 175 lbs (79,4 kg)	≤ 80 lbs (36,3 kg)	≤ 175 lbs (79,4 kg)
Tilt	20°	15°	—	—
VESA	100 x 100 to 400 x 300	100 x 100 to 600 x 400	100 x 100 to 400 x 300	100 x 100 to 600 x 400
Depth	1.9" (4,9 cm)	2.7" (6,9 cm)	1.6" (4,1 cm)	1.7" (4,4 cm)



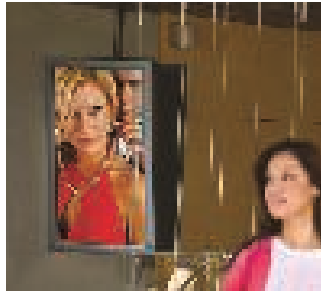
Part # (color)	60-618 (black)	60-619 (black)	45-299-026 (polished aluminum)	45-296-026 (polished aluminum)	45-304-026 (polished aluminum)
Typical LCD Size	23–42"	37–52"	19–26"	30–60"	30–60+"
Weight Capacity	≤ 80 lbs (36,3 kg)	≤ 125 lbs (56,7 kg)	7–20 lbs (3,2–9,1 kg)	18–40 lbs (8,2–18,2 kg)	35–70 lbs (15,9–31,8 kg)
Tilt	20°	20°	↑ 70° / ↓ 5°	↑ 10° / ↓ 15°	↑ 5° / ↓ 15°
Pan	180°+	180°+	180°	180°	180°
VESA	100 x 100 to 400 x 400	100 x 100 to 600 x 400	75 x 75 to 200 x 200	200 x 100 to 600 x 400	200 x 100 to 600 x 400
Depth	3.3" (8,4 cm)	5.5" (14 cm)	3.9" (9,9 cm)	5.5" (14 cm)	6.5" (16,5 cm)
Extension	15.6" (39,7 cm)	22" (55,9 cm)	16.6" (42 cm)	24" (61 cm)	28" (71 cm)

Our products set new standards for ease of installation and are readily adapted to the unique conditions of any location.

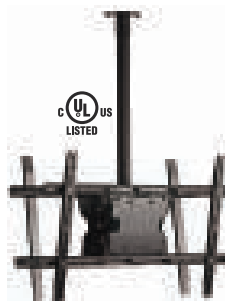


Part # (color)	45-268-026 (polished aluminum)	45-269-009 (black)	97-589 (black)
Typical LCD Size	≤ 42"	≤ 42"	13–32"
Weight Capacity	≤ 50 lbs (22,7 kg) Adding second extension (45-189-194) reduces maximum weight capacity to 36 lbs (16,3 kg)	≤ 50 lbs (22,7 kg)	≤ 40 lbs (18,1 kg)
Tilt	20°	20°	—
Pan	360°	40°	—
Rotation	360° Portrait to landscape screen rotation	360° Portrait to landscape screen rotation	—
VESA	MIS-D/E/F See website for details	MIS-D/E/F See website for details	75 x 75 to 200 x 200
Depth	Folds to 3.7" (9,1 cm)	3.7" (9,1 cm)	0.5" (1,3 cm)
Extension	13" (33 cm)	—	—

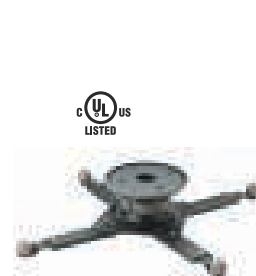
LCD SIZE IS APPROXIMATION. DIMENSION IS DIAGONAL MEASUREMENT OF SCREEN. LCD SIZE MAY BE EXCEEDED AS LONG AS SCREEN WEIGHT DOES NOT EXCEED MAXIMUM WEIGHT CAPACITY OF THE MOUNT









Professional grade ceiling mounts provide single and back-to-back flat panel mounting options. With versatility and flexibility built right in, these mounts are ideal for any ceiling application – whether TV viewing or digital signage.



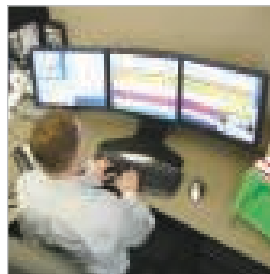
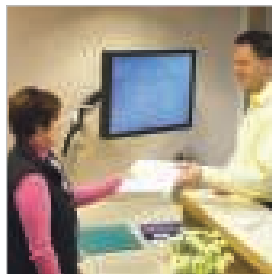
**Neo-Flex
Ceiling Mount, Double**



**Neo-Flex
Projector Ceiling Mount**

Part # (color)	60-622 (black)	60-623 (black)
 Typical LCD Size	two 37–70"	—
 Weight Capacity	≤ 400 lbs (181,4 kg)	Small to large projectors ≤ 40 lbs (18,1 kg)
 Tilt	30°	30°
 Pan	—	30°
 Rotation	—	360°
 VESA	100 x 100 to 800 x 400	—

+ Finance + Healthcare + Hospitality + Automotive + Enterprise + Transportation + Education + Retail + Restaurants + Offices + Public Venues + Events + Libraries +



© 2012 Ergotron, Inc. Made in US rev. 06/13/2012 e-01-034-EA Content is subject to change without notification

Americas Sales and Corporate Headquarters

St. Paul, MN USA
(800) 888-8458
+1-651-681-7600
www.ergotron.com
sales@ergotron.com

EMEA Sales

Amersfoort, The Netherlands
+31 33 45 45 600
www.ergotron.com
info.eu@ergotron.com

APAC Sales

Tokyo, Japan
www.ergotron.com
apaccustomerservice@ergotron.com

Worldwide OEM Sales

www.ergotron.com
info.oem@ergotron.com

