

INFORMATION



27" IPS, Full HD panel with B energy class

The XUB2763HSU-B1 is *the* product choice for the environmentally aware, a choice that helps drive progress towards a more sustainable future. To achieve this, we use zero plastic to pack this product and the product housing itself is made of 85% post-consumer recycled materials. The monitor is also TCO Certified and meets EPEAT® Silver criteria. To take care of your eye health, it complies with the Eye Safe and Eye Comfort Certifications. Based on IPS panel technology the Full HD XUB2763HSU-B1 assures wide viewing angles and highly accurate colours. And the ergonomic, 150mm height adjustable stand guarantees optimal user comfort.

Thank you

Thank you for making a responsible product choice, that helps drive progress towards a more sustainable future. To achieve this, we use zero plastic to pack this product and the product housing itself is made of 85% post-consumer recycled plastics. 100% of the packing is fully recyclable.

Better Choice - Certified

This product meets 100% of the TCO Certified criteria, the world's most comprehensive sustainability certification for IT products. It also meets the EPEAT® Silver criteria covering both Environmental and Social Responsibility Assessment set out by EPEAT® - world's premier ecolabel for electronics. Same as each electronic equipment sold in the EU, it complies with the The Restriction of Hazardous Substances Directive 2002/95/EC (RoHS 1) on the restriction of the use of certain hazardous substances. However, although the directive allows for use of up to 0.1% of mercury, this product is 100% mercury free.

Save electricity, maintain picture performance

Choosing a monitor with B energy class means you effectively save electricity without compromising on performance - the power-efficient feature using the most efficient LED backlight technology in combination with high efficiency colour filter maintains brightness and vivid colours so the picture performance stays unaffected.

Take care of your eyes

Based on optical testing and research led by optometrists and ophthalmologists from across the globe, the Eye Safe Certification, means this product provides always-on blue light protection reducing high-energy blue light yet maintaining colour performance intact. It also meets the requirements of the Eye Comfort Certification confirming the product has reduced blue light and is flicker free to protect eyes and preserve user vision and allow the user to change body position without compromising visual image quality.

SPECIFICATION

01 DISPLAY CHARACTERISTICS

Design	3-side borderless
Diagonal	27", 68.6cm
Panel	IPS panel technology LED, matte finish
Native resolution	1920 x 1080 @100Hz (2.1 megapixel Full HD)
Aspect ratio	16:9
Panel brightness	250 cd/m²
Static contrast	1300:1
Advanced contrast	80M:1
Response time (GTG)	3ms
Viewing zone	horizontal/vertical: 178°/178°, right/left: 89°/89°, up/down: 89°/89°
Colour support	16.7mIn (sRGB: 96%; NTSC: 72%)
Horizontal Sync	45 - 100kHz
Viewable area W x H	607.5 x 345.2mm, 23.9 x 13.9"
Pixel pitch	0.311mm
Colour	matte, black

02 INTERFACES / CONNECTORS / CONTROLS

Signal input	HDMI x1 DisplayPort x1
USB HUB	x2 (v. 3.2 Gen 1 (5Gbps, DC5V, 900mA))
HDCP	yes
Headphone connector	yes

03 FEATURES

Blue light reducer	yes
Flicker free	yes
FreeSync support	yes
Extra	i-Style colour
OSD languages	EN, DE, FR, IT, RU, JP, CZ, NL, PL
Control buttons	Power, Menu, Up / Right / Volume, Down / Left / Eco, Input / Exit
User controls	picture adjust (brightness, contrast, i-Style colour, ACR, ECO, OD, X-Res Technology), colour settings (gamma, RGB range, colour temp.), image settings (video mode adjust, blue light reducer, sharp and soft), OSD settings (OSD H. position, OSD V. position, OSD time, OSD background, OSD rotate, language), extra (reset, DDC/CI, LED, opening logo, adaptive sync, display information), input select, audio settings (volume, mute)
Speakers	2 x 2W
Convenience	Kensington-lock™ prepared, DDC/CI, DDC2B, Mac OSX

04 MECHANICAL

Display position adjustments	height, swivel, tilt, pivot (rotation both sides)
Height adjustment	150mm
Rotation (PIVOT function)	90°
Swivel stand	90°; 45° left; 45° right
Tilt angle	23° up; 5° down
VESA mounting	100 x 100mm
Cable management system	yes

05 ACCESSORIES INCLUDED

Cables	power, USB, HDMI
Other	quick start guide, safety guide

06 POWER MANAGEMENT

Power supply unit	internal
Power supply	AC 100 - 240V, 50/60Hz
Power usage	10.5W default, 0.5W stand by, 0.3W off mode

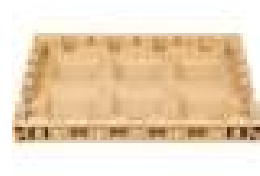
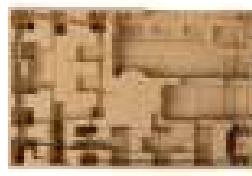
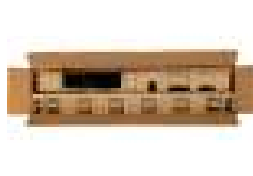
07 SUSTAINABILITY

Regulations	TCO Certified, CE, TÜV-Bauart, EAC, VCCI-B, PSE, RoHS support, ErP, WEEE, REACH, UKCA
Energy efficiency class (Regulation (EU) 2017/1369)	B
EPEAT Silver	EPEAT is a comprehensive environmental rating that helps identify greener computers and other electronic equipment. The Silver certification means the monitor meets all required criteria plus at least 50% of the optional requirements. EPEAT Silver is valid in countries where iiyama registers the product. Please visit www.epeat.net for the registration status in your country.
REACH SVHC	above 0.1%: Lead

08 DIMENSIONS / WEIGHT

Product dimensions W x H x D	612 x 387.5 (547.5) x 209.5mm
Weight (without box)	5.8kg
EAN code	4948570123780





All trademarks and registered trademarks acknowledged. E & O E. Specification subject to change without notice. All LCD's comply with ISO-9241-307:2008 in connection with pixel defects. © **Iiyama Corporation. All Rights Reserved**