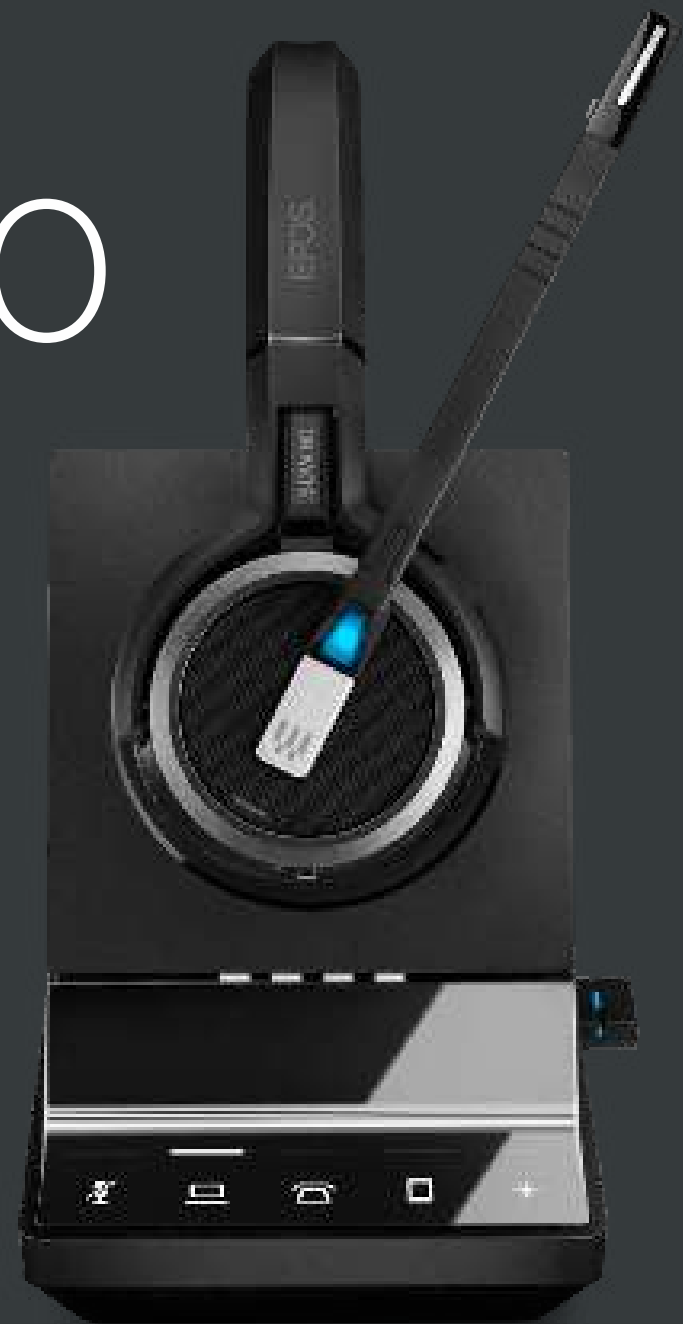


EPOS

EMEA/APAC

IMPACT 5000 Series

IMPACT 5000 Series is a wireless DECT headset for modern office professionals, providing next generation communication quality, future-proof device flexibility, all-day wearing comfort and advanced security to modern work environments.



We are rebranding from EPOS | SENNHEISER to EPOS branding on our products. During the transition period the same product may exist in both versions



Key Features

Get all-day wearing comfort

With soft leatherette ear pad and a choice of wearing styles for consistent comfort and well-being to increase efficiency

Increase productivity and create focus

With clear busy light, noise dampening ear pads and easy call management

Experience superior EPOS sound

With super wideband and advanced two microphone noise-cancelling system that meets Teams Open Office specifications

Empower your people with total flexibility

One flexible headset that pairs easily to all devices with extensive wireless range up to 180 m/590 ft

Ensure enhanced security for all your calls

With Protected Pairing, 128-bit authentication and DECT Security certification

What's in the Box

Base Station



Headset



USB Dongle



USB Cable



Safety Guide

Quick Guides

Compliance Sheet

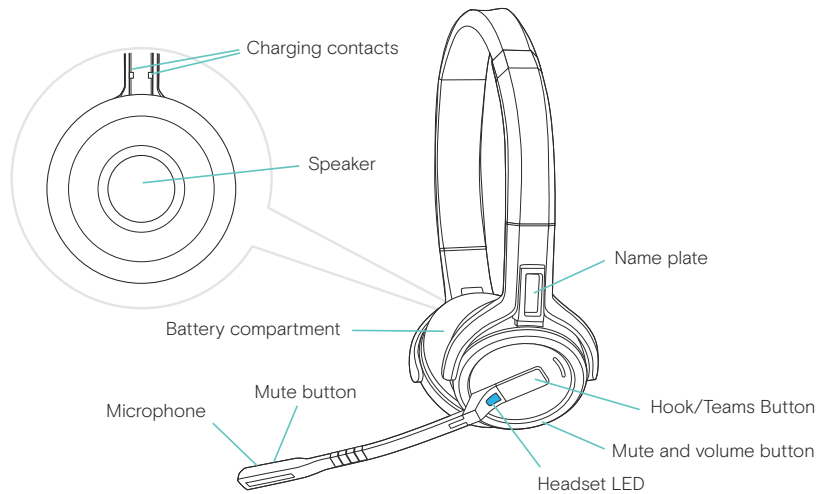


Items in the box may vary depending on product variant and may include:

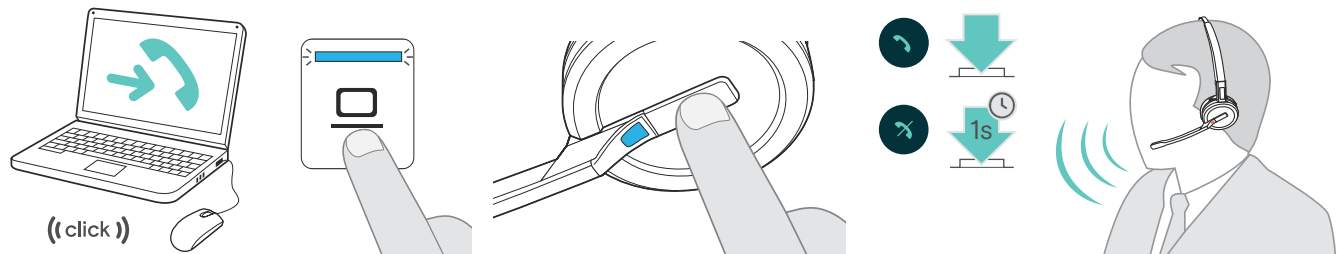
Power Suply

Audio Phone Cable

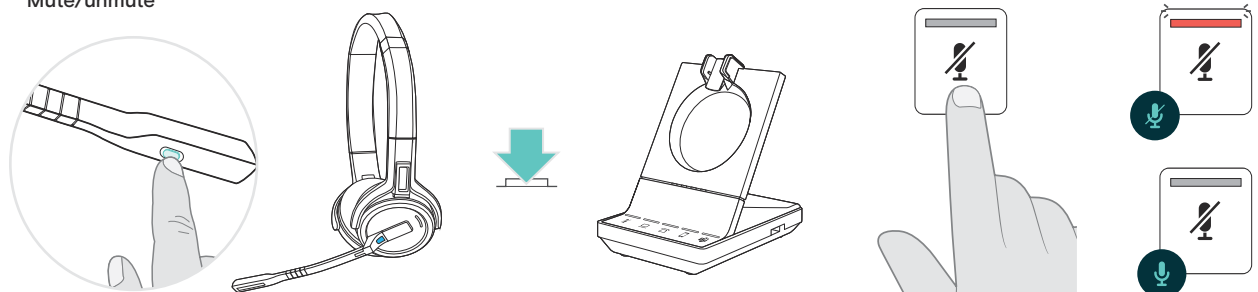
How to Use the IMPACT 5000



Accept/end a call



Mute/unmute



Additional benefits & features

**High-density wideband mode**

Delivers crisp and natural sound for clear calls even in dense office environments.

**Triple connectivity**

Stay connected to computer, desk phone, and mobile phone at the same time.

**Extended talk time**

Have uninterrupted conversations for up to 14 hours in narrowband mode.

**Fast charging**

Stay ready by getting up to 50% of battery charge in just 30 minutes.

**EPOS ActiveGard® technology**

Prevent hearing loss or damage by protecting yourself from acoustic shock.

**Improved speech intelligibility**

Be heard with a two-microphone noise-cancelling system and own-voice detection.

**EPOS Manager**

Configure, manage, and monitor device usage remotely from a central admin portal

**4-headset conferencing**

Use the same base station to set up phone conferences for up to 4 headsets.

**Rich multimedia experience**

Enjoy music and multimedia with exceptional quality stereo sound.

Product data

1/6

General

| | |
|----------------|--|
| Wearing style | Single- and double-sided headset |
| Headset weight | 501X: 44 g / 1.55 oz (Ear hook version) 58 g / 2.05 oz (Headband version) 43 g / 1.52 oz (Neckband version) 503X: 100 g / 3.52 oz 506X: 136 g / 4.80 oz |
| DECT | 1.880 to 1.900 MHz (EU, UK, AUS) |
| Warranty | 2 years |

Audio

| | |
|-------------------------------|--|
| Speaker frequency response | 501X: 100 Hz – 11.0 kHz (Super wideband) 100 Hz – 7,5 kHz (Standard wideband and High density wideband) 150 Hz – 3.5 kHz (Narrowband) 503X: 50 Hz – 11.5 kHz (Super wideband) 50 Hz – 7,5 kHz (Standard wideband and High density wideband) 150 Hz – 3.5 kHz (Narrowband) 20 Hz – 20 kHz (Fullband – music mode) 506X: 150 Hz – 11.5 kHz (Super wideband) 150 Hz – 7,5 kHz (Standard wideband and High density wideband) 150 Hz – 3.5 kHz (Narrowband) 20 Hz – 20 kHz (Fullband – music mode) |
| Microphone type | Digital MEMs microphones – two microphone noise-cancelling system for exceptional speech clarity |
| Microphone frequency response | 501X: 100 Hz – 11.0 kHz (Super wideband) 100 Hz – 7,5 kHz (Standard wideband and High density wideband) 150 Hz – 3.5 kHz (Narrowband) 503X: 100 Hz – 11.0 kHz (Super wideband) 100 Hz – 7,5 kHz (Standard wideband and High density wideband) 150 Hz – 3.5 kHz (Narrowband) 506X: 100 Hz – 11.0 kHz (Super wideband) 100 Hz – 7,5 kHz (Standard wideband and High density wideband) 150 Hz – 3.5 kHz (Narrowband) |
| Noise cancellation | Two microphone noise-cancelling system |

Product data

2/6

Technical

Charging time

501X: 0 – 50%: 30 minutes
0 – 100%: 1 hour
503X: 0 – 50 %: 30 minutes
0 – 100 %: 1 hour and 30 min
506X: 0 – 50 %: 30 minutes
0 – 100%: 1 hour and 30 min.

Standby time

501X: Up to 48 hours
503X/506X: Up to 44 hours

Talk time

501X: Up to 10 hours (Narrowband)
Up to 7 hours (Density optimized wideband)
Up to 8 hours (Wideband)
Up to 6 hours (Super wideband)
503X: Up to 14 hours (Narrowband)
Up to 12 hours (Density optimized wideband)
Up to 11,5 hours (Wideband)
Up to 9 hours (Super wideband)
506X: Up to 14 hours (Narrowband)
Up to 12 hours (Density optimized wideband)
Up to 11,5 hours (Wideband)
Up to 9 hours (Super wideband)

Range

Line of sight: 180 m / 590 ft
Typical office building: 55 m / 180 ft

Software

EPOS devices can be managed with following Software solutions:

EPOS Connect

Conduct firmware updates and configure headsets for personal audio preferences.
EPOS Connect works for Windows, Mac® and VDI/Thin client environments: eposaudio.com/software-epos-connect

EPOS Manager

Manage, update and configure EPOS audio devices from any location.
For both cloud and on-premises solutions: eposaudio.com/software-epos-manager

Product data

3/6

| What's in the box | Product | SDW 5013 | SDW 5015 | SDW 5016 | SDW 5033 | SDW 5035 | SDW 5036 | SDW 5063 | SDW 5065 | SDW 5066 |
|-------------------|--------------------|----------|----------|----------|----------|----------|----------|----------|----------|----------|
| Headset | SDW 10 HS* | ● | ● | ● | | | | | | |
| | SDW 30 HS | | | | ● | ● | ● | | | |
| | SDW 60 HS | | | | | | | ● | ● | ● |
| Base Station | SDW 3 BS | ● | | | ● | | | ● | | |
| | SDW 5 BS | | ● | ● | | ● | ● | | ● | ● |
| Dongle | BTD 800 USB Dongle | | | ● | | | ● | | | ● |
| Cables | Power Supply | ● | ● | ● | ● | ● | ● | ● | ● | ● |
| | USB Cable | ● | ● | ● | ● | ● | ● | ● | ● | ● |
| | Audio Phone Cable | | ● | ● | | ● | ● | | ● | ● |

Quick Guide, Safety Guide and Compliance Sheet are included for all solutions

* incl. 3-in-1 wearingstyle kit: headband, neckband, earhook and accessories

Product data

4/6

| What's in the box | Product | SDW 5013T | SDW 5016T | SDW 5033T | SDW 5036T | SDW 5063T | SDW 5066T |
|-------------------|--------------------|-----------|-----------|-----------|-----------|-----------|-----------|
| Headset | SDW 10 HS* | ● | ● | | | | |
| | SDW 30 HS | | | ● | ● | | |
| | SDW 60 HS | | | | | ● | ● |
| Base Station | SDW 3 BS T | ● | | ● | | ● | |
| | SDW 5 BS T | | ● | | ● | | ● |
| Dongle | BTD 800 USB Dongle | | ● | | ● | | ● |
| Cables | Power Supply | ● | ● | ● | ● | ● | ● |
| | USB Cable | ● | ● | ● | ● | ● | ● |
| | Audio Phone Cable | | ● | | ● | | ● |

Quick Guide, Safety Guide and Compliance Sheet are included for all solutions

* incl. 3-in-1 wearingstyle kit: headband, neckband, earhook and accessories

Product data

5/6

| Product | Wearing style | Connects to | Certifications | EAN code | UPC code |
|---|---------------|---|---|------------------|-----------------|
| SDW 5066 – EU / UK / AUS Art. no. 1001026 | Double-sided | Desk phone, PC/Softphone, mobile devices | Optimized for UC and certified for Webex, Avaya, Alcatel-Lucent Enterprise, Enreach | 57 14708 00828 6 | 8 40064 40828 8 |
| SDW 5066 – AUS* Art. no. 1000630 | Double-sided | Desk phone, PC/Softphone, mobile devices | Optimized for UC and certified for Webex, Avaya, Alcatel-Lucent Enterprise, Enreach | 57 14708 00431 8 | 8 40064 40431 0 |
| SDW 5066T – EU / UK / AUS Art. no. 1001039 | Double-sided | Desk phone, PC/Softphone, mobile devices | Optimized for UC and certified for Microsoft Teams | 57 14708 00841 5 | 8 40064 40841 7 |
| SDW 5066T – AUS* Art. no. 1001124 | Double-sided | Desk phone, PC/Softphone, mobile devices | Optimized for UC and certified for Microsoft Teams | 57 14708 00926 9 | 8 40064 40926 1 |
| SDW 5036 – EU / UK / AUS Art. no. 1001025 | Single-sided | Desk phone, PC/Softphone, mobile devices | Optimized for UC and certified for Webex, Avaya, Alcatel-Lucent Enterprise, Enreach | 57 14708 00827 9 | 8 40064 40827 1 |
| SDW 5036 – AUS* Art. no. 1000590 | Single-sided | Desk phone, PC/Softphone, mobile devices | Optimized for UC and certified for Webex, Avaya, Alcatel-Lucent Enterprise, Enreach | 57 14708 00391 5 | 8 40064 40391 7 |
| SDW 5036T – EU / UK / AUS Art. no. 1001037 | Single-sided | Desk phone, PC/Softphone, mobile devices | Optimized for UC and certified for Microsoft Teams | 57 14708 00839 2 | 8 40064 40839 4 |
| SDW 5036T – AUS* Art. no. 1001123 | Single-sided | Desk phone, PC/Softphone, mobile devices | Optimized for UC and certified for Microsoft Teams | 57 14708 00925 2 | 8 40064 40925 4 |
| SDW 5016 – EU / UK / AUS Art. no. 1001024 | Single sided | Desk phone, PC/Softphone, mobile devices | Optimized for UC and certified for Webex, Avaya, Alcatel-Lucent Enterprise, Enreach | 57 14708 00826 2 | 8 40064 40826 4 |
| SDW 5016T – EU / UK / AUS Art. no. 1001035 | Single sided | Desk phone, PC/Softphone, mobile devices | Optimized for UC and certified for Microsoft Teams | 57 14708 00837 8 | 8 40064 40837 0 |
| SDW 5065 – EU / UK / AUS Art. no. 1001023 | Double-sided | Desk phone, PC/Softphone | Optimized for UC and certified for Google Meet, Webex, Avaya, Alcatel-Lucent Enterprise, Enreach | 57 14708 00825 5 | 8 40064 40825 7 |
| SDW 5035 – EU / UK / AUS Art. no. 1001022 | Single-sided | Desk phone, PC/Softphone | Optimized for UC and certified for Webex, Avaya, Alcatel-Lucent Enterprise, Enreach | 57 14708 00824 8 | 8 40064 40824 0 |

* AU-limiter ON

Product data

6/6

| Product | Wearing style | Connects to | Certifications | EAN code | UPC code |
|---|---------------|--------------------------|---|------------------|-----------------|
| SDW 5015 – EU / UK / AUS Art. no. 1001021 | Single sided | Desk phone, PC/Softphone | Optimized for UC and certified for Webex, Avaya, Alcatel-Lucent Enterprise, Enreach | 57 14708 00823 1 | 8 40064 40823 3 |
| SDW 5063 – EU / UK / AUS Art. no. 1001017 | Double-sided | PC/Softphone | Optimized for UC and certified for Webex, Avaya, Alcatel-Lucent Enterprise, Enreach | 57 14708 00819 4 | 8 40064 40819 6 |
| SDW 5063T – EU / UK / AUS Art. no. 1001033 | Double-sided | PC/Softphone | Optimized for UC and certified for Microsoft Teams | 57 14708 00835 4 | 8 40064 40835 6 |
| SDW 5033 – EU / UK / AUS Art. no. 1001016 | Single sided | PC/Softphone | Optimized for UC and certified for Webex, Avaya, Alcatel-Lucent Enterprise, Enreach | 57 14708 00818 7 | 8 40064 40818 9 |
| SDW 5033T – EU / UK / AUS Art. no. 1001031 | Single sided | PC/Softphone | Optimized for UC and certified for Microsoft Teams | 57 14708 00833 0 | 8 40064 40833 2 |
| SDW 5013 – EU / UK / AUS Art. no. 1001015 | Single sided | PC/Softphone | Optimized for UC and certified for Webex, Avaya, Alcatel-Lucent Enterprise, Enreach | 57 14708 00817 0 | 8 40064 40817 2 |
| SDW 5013T – EU / UK / AUS Art. no. 1001029 | Single sided | PC/Softphone | Optimized for UC and certified for Microsoft Teams | 57 14708 00831 6 | 8 40064 40831 8 |

Spare parts & Accessories

1/1

| Product | Art. no. | Description | EAN code | UPC code |
|----------------------------|----------|---|------------------|-----------------|
| SDW 10 HS | 1000631 | Single-sided headset with three wearing styles for SDW 501x and SDW 501xT | 57 14708 00432 5 | 8 40064 40432 7 |
| SDW 30 HS | 1000632 | Single-sided headset for SDW 503x and SDW 503xT o | 57 14708 00433 2 | 8 40064 40433 4 |
| SDW 60 HS | 1000663 | Double-sided headset for SDW 506x and SDW 506xT | 57 14708 00434 9 | 8 40064 40434 1 |
| SDW 3 BS – EU / UK / AUS | 1001028 | Base station for SDW 50x3 | 57 14708 00830 9 | 8 40064 40830 1 |
| SDW 3 BS T – EU / UK / AUS | 1001043 | Base station for SDW 50x3T | 57 14708 00845 3 | 8 40064 40845 5 |
| SDW 5 BS – EU / UK / AUS | 1001027 | Base station for SDW 50x5 and SDW 50x6 (without BTD 800 dongle) | 57 14708 00829 3 | 8 40064 40829 5 |
| SDW 5 BS T – EU / UK / AUS | 1001041 | Base station for SDW 50x6T (without BTD 800 dongle) | 57 14708 00843 9 | 8 40064 40843 1 |
| BTD 800 | 1000227 | USB Bluetooth® Dongle | 57 14708 00028 0 | 8 40064 40028 2 |
| CH 30 | 1000702 | Headset charger stand | 57 14708 00503 2 | 8 40064 40503 4 |
| CH 30 USB | 1001143 | USB Charging Cable | 57 14708 00945 0 | 8 40064 40945 2 |
| SDW D1 Accessory Pack | 1000982 | Carry pouch and USB-A charging cable for IMPACT 5000 headsets | 57 14708 00784 5 | 8 40064 40784 7 |
| SDW D1 USB | 1000299 | USB DECT dongle | 57 14708 00100 3 | 8 40064 40100 5 |
| UI 10 BL | 1000701 | Busylight | 57 14708 00502 5 | 8 40064 40502 7 |

Appendix

1/1

Additional product data

| | |
|--|--|
| Ear pad size | 501X: ø 53 mm / 2.09 in 503X: ø 54,5 mm / 2.15 in 506X: ø 54,5 mm / 2.15 in |
| Personalization | Yes with nameplate on headset |
| Speaker type | High-quality Neodymium Magnet Speaker for outstanding audio quality |
| GAP compatible | Yes (Headset) |
| BTD 800 USB dongle | For more information please see eposaudio.com/btd-800-usb (included in SDW 50x6 and SDW 50x6T) |
| USB-A port | Supports call handling with EPOS devices |
| Temperature range | Operational: +5 °C to + 45 °C / +41 °F to +113 °F Storage: -20 °C to + 70 °C / -4 °F to +158 °F |
| Battery (lithium polymer) | Exchangeable by service |
| Listen time (music mode) | Up to 9 hours (Fullband) |
| Auto sleep mode when out of range | Yes, after 12 hours |
| EPOS ActiveGard® technology | Protect users against acoustic injury caused by sudden sound burst on the line |
| EU* / AU Limiter depending on regional variant | Activation by dip switch, EPOS Connect and EPOS Manager software |
| Pairing intrusion protection | Protected pairing |
| Certification | DECT Security certified |

* Noise At Work: The EU's „Noise At Work Directive“ (2003/10/EC) sets limits for two types of noise in the workplace: Acoustic burst and Sustained Noise.