



Philips LED  
4K TV

**164 cm (65") TV**

Pixel Precise Ultra HD  
Titan OS smart platform  
Dolby Atmos sound



**65PUS7609**

## 4K TV

Loves to watch, loves to play.

Watch or play — you'll love this 4K TV's super-sharp picture and realistic Dolby Atmos sound! From films to shows, it's quick and easy to find what you're looking for. When you want to get your game on, the action's nice and smooth.

### **Slim TV. Sustainable materials.**

- Remote made from recycled plastic. Responsible packaging.
- Attractive design.

### **4K LED TV. Super-sharp and immersive.**

- Vibrant viewing with an ultra-sharp picture.
- Find it easily. TITAN OS.

### **Cinematic sound. Epic gaming.**

- Dolby Atmos for cinematic sound
- Great for gaming. VRR and low input lag on any console.

# PHILIPS

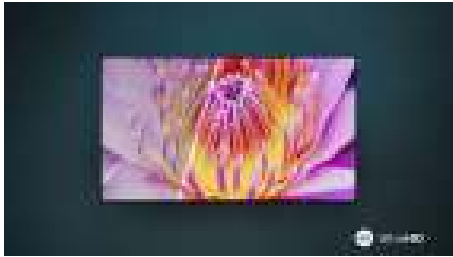
4K TV

164 cm (65") TV Pixel Precise Ultra HD, Titan OS smart platform, Dolby Atmos sound

65PUS7609/12

# Highlights

## Ultra-sharp picture



Love everything you watch on this 4K (UHD) LED TV. Philips Pixel Precise Ultra HD engine optimises picture quality to deliver ultra-sharp images, rich colours and smooth motion. You get the best possible viewing experience every time.

## TITAN OS smart platform



It's quick and easy to find what you love with our TITAN OS smart TV platform. Enjoying a series? You can continue watching straight from the home screen. If you're looking for something new, you can browse categories like action or drama and see suggestions from the top streaming services, all in one place.

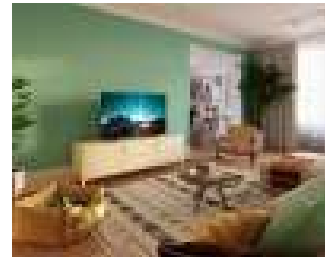
## Dolby Atmos®

Dolby Atmos pulls you in deeper by placing sound effects in the space around and above you. Whether it's spaceships flying overhead or quiet footsteps sneaking up from behind, you'll feel like you're right in the middle of the action.

## Great for gaming

HDMI 2.1 lets you get the best from your console, with fast gameplay and smooth graphics. VRR is supported, and a low input lag setting activates automatically when you turn on your console.

## Sustainable materials



This 4K UHD TV has a sleek, understated look that works with just about any interior. The TV remote is made from recycled plastic, our packaging uses FSC-certified recycled cardboard and the inserts are printed on recycled paper.

## Attractive design

Attractive design.

# Specifications

## Picture/Display

- Diagonal screen size (inch): 65 inch
- Diagonal screen size (metric): 164 cm
- Display: 4K Ultra HD LED
- Panel resolution: 3840 x 2160
- Picture engine: Pixel Precise Ultra HD

## Display input resolution

- Resolution-Refresh rate: 576 p - 50 Hz, 640 x 480 - 60 Hz, 1920 x 1080p - 24/25/30/50/ 60Hz, 2560 x 1440 - 60 Hz, 3840x2160p - 24/25/30/50/ 60Hz

## Tuner/Reception/Transmission

- Digital TV: DVB-T/T2/T2-HD/C/S/S2
- TV Programme guide\*: 8-day Electronic Programme Guide
- Signal strength indication
- Teletext: 1000 page Hypertext
- HEVC support

## Smart TV

- SmartTV apps\*: Netflix, HBO, YouTube, Amazon Prime Video, TITAN channel, NFT app\*
- OS: TITAN OS
- Memory size (Flash)\*: 8 GB

## Smart TV Features

- User Interaction: Screen mirroring
- Interactive TV: HbbTV
- Voice assistant\*: Amazon Alexa Built-in
- Smart Home experience: Works with Amazon Alexa, Works with Google assistant, Control4

## Multimedia Applications

- Video Playback Formats: Containers: AVI, MKV, HEVC, H264/MPEG-4 AVC, MPEG-1, MPEG-2, MPEG-4, VP9, HEVC/H.265, AV1
- Music Playback Formats: MP3, WAV, AAC, FLAC
- Subtitles Formats Support: .SRT, .SML, .SSA, .SUB, .ASS, .TXT
- Picture Playback Formats: JPEG, GIF, PNG, BMP, HEIF

## Sound

- Output power (RMS): 20 W
- Speaker configuration: 2 x 10 W full-range speakers

- Codec: Dolby Digital, Dolby Atmos®, DTS:X
- Sound Enhancement: Dolby Bass Enhancement, Clear Dialogue, A.I. Sound, A.I. EQ, Dolby Volume Leveller, Night Mode

## Connectivity

- Number of HDMI connections: 3
- HDMI features: 4K, Audio Return Channel
- EasyLink (HDMI-CEC): Remote control pass-through, System audio control, System standby, One touch play
- Number of USBs: 2
- Wireless connection: Wi-Fi 802.11n, 2 x 2, Single band
- HDCP 2.3: Yes on all HDMI
- HDMI ARC: Yes on HDMI1
- HDMI 2.1 features: eARC on HDMI 1, eARC/VR/ALLM supported
- EasyLink 2.0: HDMI-CEC for Philips TV/SB, External setting via TV UI

## Supported HDMI video features

- Gaming: ALLM, HDMI VRR
- HDR: HLG, HDR10, HDR10+ Compatible

## EU Energy card

- EPREL registration numbers: 1934419
- Energy class for SDR: F
- On mode power demand for SDR: 102 kWh/1000h
- Energy class for HDR: G
- On mode power demand for HDR: 160 kWh/1000h
- Off mode power consumption: n.a
- Networked standby mode: less than 0.3 W
- Panel technology used: LED LCD

## Accessories

- Included accessories: Remote Control, 2 x AAA Batteries, Tabletop stand, Power cord, Quick Use Guide, Legal and safety brochure

## Design

- Colours of TV: Anthracite grey bezel
- Stand design: Black sticks

## Dimensions

- Distance between 2 stands: 757 mm
- Wall-mount compatible: 300 x 300 mm

- TV without stand (W x H x D): 1446 x 834 x 92 mm
- TV with stand (W x H x D): 1446 x 864 x 304 mm
- Package carton (W x H x D): 1600 x 995 x 170 mm
- Weight of TV without stand: 14.7 kg
- Weight of TV with stand: 15.2 kg
- Weight incl. packaging: 20.7 kg

## Connections

### Side



### Rear



Issue date 2024-04-17

Version: 2.2.1

EAN: 87 18863 04097 3

© 2024 Koninklijke Philips N.V.  
All Rights reserved.

Specifications are subject to change without notice.  
Trademarks are the property of Koninklijke Philips N.V. or their respective owners.

[www.philips.com](http://www.philips.com)

\* This television contains lead only in certain parts or components where no technology alternatives exist in accordance with existing exemption clauses under the RoHS Directive.

\* The TV supports DVB reception for 'Free to air' broadcast. Specific DVB operators may not be supported. An up-to-date list can be found in the FAQ section of the Philips support website. For some operators Conditional Access and subscription are required. Contact your operator for more information.

\* Smart TV app availability varies by TV model and country. For more details, please visit: [www.philips.com/smarttv](http://www.philips.com/smarttv).

\* Philips TV Remote app and related functionalities vary by TV model, operator and country, as well as smart device model and OS. For more details, please visit: [www.philips.com/TVRemoteapp](http://www.philips.com/TVRemoteapp).

\* EPG and actual visibility (up to 8 days) is country- and operator-dependent.

\* Netflix subscription required. Subject to terms on <https://www.netflix.com>

\* Amazon Prime is available in selected languages and countries.

\* Amazon, Alexa and all related logos are trademarks of Amazon.com, Inc. or its affiliates. Amazon Alexa is available in selected languages and countries.

\* Over-the-top media services button on the remote control will be different in each country. Please refer to the actual product in the box.

\* Google Assistant is available in different languages and countries specific to product types.

\* Availability and functionality of voice-control services varies according to country and language.