

An exploded view diagram of the IsoBeam Isolator Shield components. It shows two large, curved, grey shield pieces, two smaller curved pieces, and several small screws and pins. The components are arranged in a way that shows how they fit together to form a protective shield.

IsoBeamTM

Isolator Shield for NanoBeam®

Models: ISO-BEAM-16
ISO-BEAM-19

QUICK START GUIDE

IsoBeam™ Compatibility

IsoBeam	Compatible NanoBeam Models
ISO-BEAM-16	NBE-M5-16, NBE-5AC-16
ISO-BEAM-19	NBE-M2-13, NBE-M5-19, NBE-5AC-19

Package Contents



IsoBeam Shield



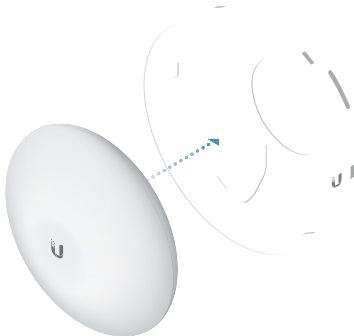
IsoBeam Ring



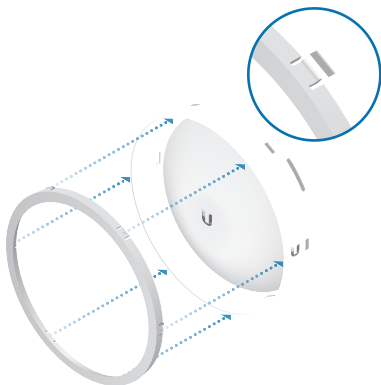
Quick Start Guide

Installation

1. Align the bubble level and port of the NanoBeam with the openings of the *IsoBeam Shield*, and then insert the NanoBeam into the *IsoBeam Shield*.



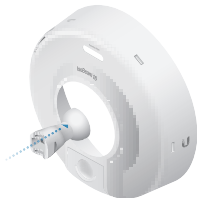
2. Align the tabs of the *IsoBeam Ring* with the slots of the *IsoBeam Shield*. Insert the *IsoBeam Ring* into the *IsoBeam Shield* until the tabs lock into the slots.



3. Insert the ball joint mount into the NanoBeam.



4. Insert the lock ring into the NanoBeam.



5. Turn the lock ring to secure the ball joint mount to the NanoBeam.



Online Resources

Support support.ubnt.com

Community community.ubnt.com

Downloads downloads.ubnt.com

©2016 Ubiquiti Networks, Inc. All rights reserved. Ubiquiti, Ubiquiti Networks, the Ubiquiti U logo, the Ubiquiti beam logo, IsoBeam, and NanoBeam are trademarks or registered trademarks of Ubiquiti Networks, Inc. in the United States and in other countries. All other trademarks are the property of their respective owners.

JL030716



640-00233-02