



Vertiv™ Edge single phase UPS

500 - 3000 VA 230 V

Superior Power Protection
for Edge Applications



Vertiv™ Edge single phase UPS

The Vertiv™ Edge single phase UPS: Best-in-class battery backup and power protection for Edge applications, telecom and distributed IT equipment.

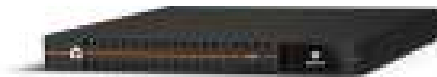
Vertiv Edge is a family of highly reliable, efficient, manageable and flexible line interactive sinewave UPSs, with models ranging from 500VA to 3000VA in tower, rack/tower and rack-mount form factors. With a 0.9 power factor, controllable outlets and extended runtime options, Vertiv Edge is the right choice for protecting server and networking equipment in distributed and Edge IT applications. Available in 1U and 2U options as well as a short-depth 3U 3000VA model, it can provide optimum runtime at the right size and power density in a cost effective UPS solution.

Tower (750/1000/1500 VA)



- Compact Tower design for tower servers and/or applications with no available rack
- Plug and play solution requiring no installation
- Vertiv Intellislot management cards available for remote power management and OS's shutdown

1U Rack Mount (500/1000/1500 VA)



- Compact 1U Rack Mount design for Edge applications with limited rack space
- Comes with rack mounting hardware included
- Vertiv Intellislot management cards available for remote power management and OS's shutdown

Rack / Tower (1500/2200/3000 VA 2U, 3000 VA 3U)



- Convertible rack/tower design with LCD display provides flexible installation options
- Extended runtime capability with external battery cabinets with autodetection, for hours of back-up time
- 3000VA 3U height with short depth (<500 mm) for compact racks that still require maximum power protection
- Vertiv Intellislot management cards available for remote power management and OS's shutdown

At a Glance

Vertiv Edge single phase UPS

- Reliable and powerful: 0.9 output power factor, ensuring more active power to protect larger loads
- Up to 6 auto-discoverable external battery cabinets for longer runtime
- Highly efficient: up to 98% in normal operation mode, providing energy and cost savings
- Up to 10 power outlets, with 3 controllable in a group for optimum battery usage
- Color graphic LCD screen
- Advanced Automatic Voltage Regulator (AVR) design for a more stable output voltage regulation
- Standard 3-years warranty for both electronics and batteries

Vertiv™ Edge Highlights



LCD display

Color and graphic LCD display for an intuitive user interface



High output power factor (0.9)

It enables Vertiv Edge single phase UPS to protect more loads



External battery cabinets

The Rack/Tower models allow longer runtimes thanks to the external battery cabinets with auto-detection

Efficiency up to 98%

High efficiency in normal operation mode means an optimized energy management, thus providing energy savings



Flexibility

Easy to install and a wide range of power ratings, from 500VA up to 3000VA, available in multiple form factors: tower, 1U rack mount and rack/tower



Leading technology

Advanced AVR design (2 x boost / 1 buck taps) for a more stable output voltage regulation



Controllable outlets

Enables load shedding of non-critical loads, so critical loads can have longer runtime

Vertiv™ Edge single phase UPS

Reliable UPS Protection At The All-Important Network Edge

The network Edge is becoming increasingly important as companies seek to take advantage of Internet of Things, cloud computing and other applications that require localized compute power, networking services and data storage – all with low latency. Distributed and Edge data centers are now no less important to business success than large centralized data centers, so must be afforded similar power protection.

The Vertiv™ Edge line interactive UPS family is intended for distributed IT and Edge applications that require reliable, efficient power protection for server and networking equipment. It comes in tower, rack tower and rack mount form factors, with capacities ranging from 500VA to 3000VA. Each model has a 0.9 output power factor (PF), enabling them to protect larger loads than competing models of the same capacity.

Vertiv Edge single phase UPSs support up to 6 extended-run battery cabinets (EBCs), providing more runtime at full load than comparable competing UPSs. An auto-detect feature make the EBCs easy to add and configure.

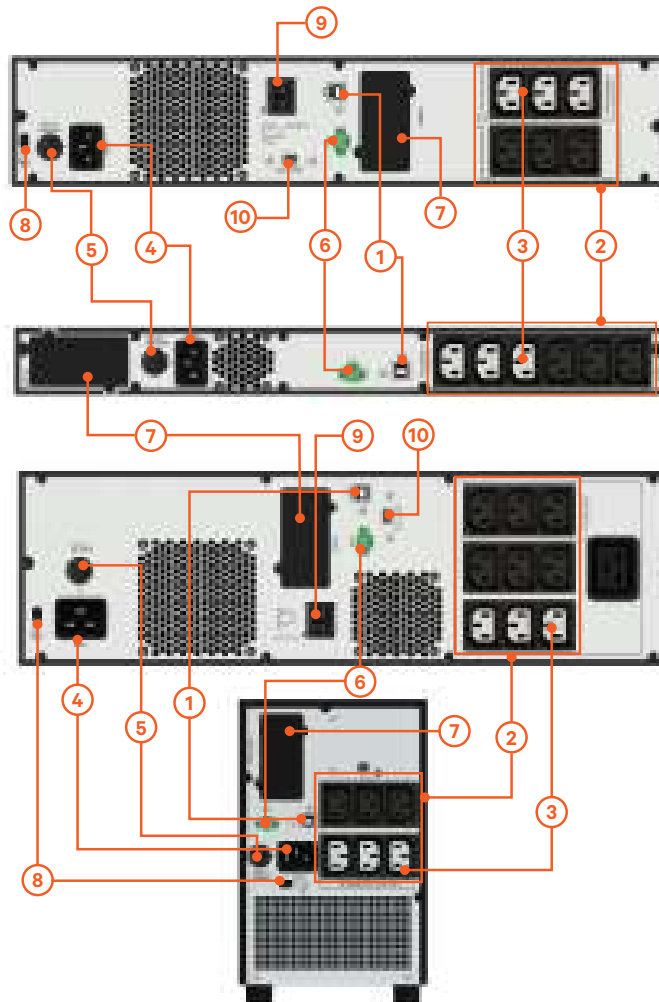
Vertiv Edge single phase UPSs are also highly manageable, with a colorful, graphical LCD screen for easy, intuitive on-site management, as well as optional SNMP support. Vertiv Edge single phase UPS is compatible with the free [Vertiv Power Assist](#) software for local UPS status and shutdown of IT loads connected locally or [Vertiv Power Insight](#) software for remote network management.

A standard 3-years warranty for both electronics and batteries protects your UPS investment.

What's in the box

- Vertiv™ Edge single phase UPS
- USB type A to B Cable
- Quick Installation Guide and Safety instructions
- Adjustable 4-post rackmounting kit (not included with Tower models)
- Rackmounting ears/hardware
- Stabilizing feet for tower configuration (Rack/Tower models only)
- UPS management software (free download from [vertiv.com](#))
- 2 x IEC C13 to C14 output cables (1.8 m)
- Input power cables (UK, AUS, Schuko, 1.8 m)

1. USB Port
2. Output receptacles
3. Programmable outlet group
4. Input power socket
5. Input circuit breaker
6. Emergency Power Off (EPO) connector
7. Vertiv™ Intellislot Port for optional management cards
8. Earth terminal
9. External battery cabinet connection
10. Automatic battery detection connector



Vertiv™ Edge 1500VA
2U Rack/Tower UPS

Vertiv™ Edge 1000VA
1U Rack UPS

Vertiv™ Edge 3000VA
3U Rack/Tower UPS

Vertiv™ Edge 1500VA
Tower UPS

Efficient & Green



High efficiency: Vertiv™ Edge single phase UPS operate at up to 98% efficiency in normal operation mode, saving on electricity costs throughout their lifetime.

Extended battery life: Deep discharge protection prevents the potential damage that can occur when a UPS battery fully drains.

Configurable “Green function”: When in battery mode with only very small loads, the UPS will automatically shut itself down for energy savings.

Programmable outlets: 3 of the 6 Vertiv Edge outlets are configurable (1 group), enabling users to shut down less-critical loads in the event of an outage to optimize battery runtime.

RoHS and REACH compliant

Maximize Power Protection



High output Power Factor: Each Vertiv Edge single phase UPS operates at 0.9 output power factor (PF), which means that more active power can be used to protect IT equipment. That enables Vertiv Edge single phase UPSs to protect larger loads compared to competing models of the same capacity with a lower PF.

Advanced AVR design: Automatic voltage regulation (AVR) smooths out power spikes, swells and brownouts without the UPS switching to battery mode and help to extend battery life. The advanced design with 2 x boost / 1 x buck increases or decreases voltages as required to prevent the load from extreme supply voltages.

Flexibility and Manageability



Easy to install, configure and operate: Auto-detect external battery cabinets and color LCD display help to make the UPS operation easier and the user interface more intuitive.

Optional management cards: For advanced remote monitoring and management of the UPS, including graceful shutdown.

Environmental monitoring: Optional web card also supports integration with environmental sensors, to detect excessive heat, moisture, motion and more.

External battery cabinets: Attach up to 6 external battery cabinets to gain additional runtime.

Remote Emergency Power Off: Allows the UPS to be remotely shutdown during an emergency.

Optional Liebert MicroPOD Output Distribution and Maintenance Bypass Module: When your computer system can't be without power, even for scheduled UPS maintenance, the Vertiv™ Liebert® MicroPOD ensures continuous uptime.

Vertiv™ Edge single phase UPS

Comprehensive Services for Critical Systems

Power Emergency Package

The Power Emergency Package provides emergency support with 100% parts coverage and is available for single-phase UPS products up to 3kVA. Adding Vertiv services to your Vertiv Edge single phase UPS ensures you are protected during an emergency.

- Five years service coverage
- 24x7 professional Helpline
- Advanced replacement of the faulty unit
- Shipping costs covered by Vertiv
- Coverage for both electronic parts and battery failures
- The Power Emergency Premier version also provides remote diagnostic and preventive monitoring with Vertiv™ LIFE™ Services, enabled via the optional Liebert® Intellislot Unity Card

Installation and Start-up Services

Installation and Start-up Services provide on-site technical support for installation and start-up of your UPS or battery cabinet, ensuring you get up and running as quickly as possible:

- Installation for 3kVA models includes mounting the new UPS and battery cabinets in 8x5 (PS-RUPS-INSTL85-005) or 24x7 (PS-RUPS-INSTL247-005)
- Start-up available for 3kVA models in 2 scheduling options, in 8x5 (PS-RUPS-ST85-005) or 24x7 (PS-RUPS-ST247-005)
- Services performed by a Vertiv factory trained technician

Vertiv™ Edge 1U Rack Mount	Power Emergency	Power Emergency Premier	Warranty Extension +1 year	Warranty Extension +3 years
500 VA	RUPS-PE5-003	-	RUPS-WE1-003	RUPS-WE3-003
1000/1500 VA	RUPS-PE5-004	-	RUPS-WE1-004	RUPS-WE3-004
Vertiv™ Edge 2U/3U RT	Power Emergency	Power Emergency Premier	Warranty Extension +1 year	Warranty Extension +3 years
1500 VA	RUPS-PE5-004	-	RUPS-WE1-004	RUPS-WE3-004
2200 VA	RUPS-PE5-005	-	RUPS-WE1-005	RUPS-WE3-005
3000 VA	RUPS-PE5-005	RUPS-PEP5-005	RUPS-WE1-005	RUPS-WE3-005
Vertiv™ Edge Tower	Power Emergency	Power Emergency Premier	Warranty Extension +1 year	Warranty Extension +3 years
750 VA	RUPS-PE5-003	-	RUPS-WE1-003	RUPS-WE3-003
1000 VA	RUPS-PE5-003	-	RUPS-WE1-003	RUPS-WE3-003
1500 VA	RUPS-PE5-004	-	RUPS-WE1-004	RUPS-WE3-004

Note: Service offerings are available only in select countries, please check with your Vertiv representative if yours is included. Timing may vary depending on local country public holidays and other considerations. Please refer to the appropriate Scope of Work for additional details.

Build Your Total Infrastructure Solution with Vertiv

Discover expert designed IT infrastructure solutions with proven success in diverse environments and countless applications.

Vertiv™ Geist™ rPDU

Reliable power distribution with outlet level remote monitoring and management providing the highest level of power visibility and control.

Vertiv™ VR Rack

Self-contained 42U server rack designed to simplify equipment installation and provides an additional 6cm of useable depth.

Vertiv™ VRC

Keep critical IT equipment cool with a dedicated high-efficiency rack-mount cooling system with scalable capacity.



Cable and Air Flow Management

Included accessories ensure proper cable management and airflow to keep your equipment cool.

Software and IT Management

Monitor the entire system either locally or remotely to ensure you are alerted of out-of-range conditions that could result in costly downtime.

Vertiv™ Edge single phase UPS

Protect mission critical equipment in the event of power loss or extreme power fluctuations.

Visit [Vertiv.com](https://www.vertiv.com) or contact a Vertiv Sales Representative today to find out how Vertiv can help you configure an all-in-one infrastructure solution.

Technical Specifications - 1U Rack Mount Models

Model Number	EDGE-500IRM1U	EDGE-1000IRM1U	EDGE-1500IRM1U
Rating (VA/W)	500VA/450W	1000VA/900W	1500VA/1350W
Dimensions, mm			
Unit (W x D x H)	438 x 380 x 43	438 x 480 x 43	438 x 600 x 43
Shipping (W x D x H)	550 x 620 x 200	570 x 700 x 200	570 x 780 x 200
Weight, kg			
Unit	11	16	23
Shipping	17	23	30
Input AC Parameters			
Voltage Range Without Battery Operation (230V default)	166 - 278	166 - 278	166 - 278
Frequency Range (Hz)	45 - 65, autosensing	45 - 65, autosensing	45 - 65, autosensing
Input Power Connector	IEC60320 C14	IEC60320 C14	IEC60320 C14
Surge Protection (J)	624	624	624
Output AC Parameters			
Output Receptacles	3 + 3 IEC60320 C13	3 + 3 IEC60320 C13	3 + 3 IEC60320 C13
Output Receptacles - Controllable	Yes - 1 group	Yes - 1 group	Yes - 1 group
Output Voltage	200/208/220/230/240	200/208/220/230/240	200/208/220/230/240
Waveform (Battery Operation)	Pure Sine Wave	Pure Sine Wave	Pure Sine Wave
Transfer Time	4 - 6 ms Typical	4 - 6 ms Typical	4 - 6 ms Typical
Output Overload (AC Mode)	106% - 125% @ 60 s 126% - 150% @ 50 s 151% - 200% @ 2 s	106% - 125% @ 60 s 126% - 150% @ 50 s 151% - 200% @ 2 s	106% - 125% @ 60 s 126% - 150% @ 50 s 151% - 200% @ 2 s
Efficiency (full load, line mode, typ)	96%	97%	97%
Battery			
Type	Valve-regulated, non-spillable, lead acid	Valve-regulated, non-spillable, lead acid	Valve-regulated, non-spillable, lead acid
Recharge Time (Internal batteries, typical)	3 hr @ 90%	3 hr @ 90%	3 hr @ 90%
Environmental			
Operating Temperature (°C)	0 to 40	0 to 40	0 to 40
Storage Temperature (°C)	-25°C to +55 without battery inside	-25 to +55 without battery inside	-25 to +55 without battery inside
Relative Humidity (Operation)	20% to 90%	20% to 90%	20% to 90%
Operating Altitude (m)	3000	3000	3000
Audible Noise (line mode)	<40dB normal mode, <70% load <45dB AVR mode, >70% load"	<40dB normal mode, <70% load <45dB AVR mode, >70% load"	"<40dB normal mode, <70% load <45dB AVR mode, >70% load"
Form Factor	Rack (1U)	Rack (1U)	Rack (1U)
Agency			
Compliance	CE, CB Report, EAC, RCM, UKCA	CE, CB Report, EAC, RCM, UKCA	CE, CB Report, EAC, RCM, UKCA
Safety	IEC/EN62040-1	IEC/EN62040-1	IEC/EN62040-1
Transportation	ISTA 2A	ISTA 2A	ISTA 2A
Environmental	RoHS2 / REACH / WEEE	RoHS2 / REACH / WEEE	RoHS2 / REACH / WEEE
Warranty			
Warranty	3 years	3 years	3 years

Vertiv™ Edge single phase UPS

Technical Specifications - Tower Models

Model Number	EDGE-750IMT	EDGE-1000IMT	EDGE-1500IMT
Rating (VA/W)	750VA/675W	1000VA/900W	1500VA/1350W
Dimensions, mm			
Unit (W x D x H)	145 x 370 x 220	145 x 370 x 220	145 x 480 x 220
Shipping (W x D x H)	230 x 450 x 325	230 x 450 x 325	230 x 570 x 325
Weight, kg			
Unit	13	14	20
Shipping	15	16	23
Input AC Parameters			
Voltage Range Without Battery Operation (230V default)	166 - 278	166 - 278	166 - 278
Frequency Range (Hz)	45 - 65, autosensing	45 - 65, autosensing	45 - 65, autosensing
Input Power Connector	IEC60320 C14	IEC60320 C14	IEC60320 C14
Surge Protection (J)	624	624	624
Output AC Parameters			
Output Receptacles	3 + 2 IEC60320 C13	3 + 2 IEC60320 C13	3 + 3 IEC60320 C13
Output Receptacles - Controllable	Yes - 1 group	Yes - 1 group	Yes - 1 group
Output Voltage	200/208/220/230/240	200/208/220/230/240	200/208/220/230/240
Waveform (Battery Operation)	Pure Sine Wave	Pure Sine Wave	Pure Sine Wave
Transfer Time	4 - 6 ms Typical	4 - 6 ms Typical	4 - 6 ms Typical
Output Overload (AC Mode)	106% - 125% @ 60 s 126% - 150% @ 50 s 151% - 200% @ 2 s	106% - 125% @ 60 s 126% - 150% @ 50 s 151% - 200% @ 2 s	106% - 125% @ 60 s 126% - 150% @ 50 s 151% - 200% @ 2 s
Efficiency (full load, line mode, typ)	95%	96%	97%
Battery			
Type	Valve-regulated, non-spillable, lead acid	Valve-regulated, non-spillable, lead acid	Valve-regulated, non-spillable, lead acid
Recharge Time (internal batteries, typical)	3 hr @ 90%	3 hr @ 90%	3 hr @ 90%
Environmental			
Operating Temperature (°C)	0 to 40	0 to 40	0 to 40
Storage Temperature (°C)	-25 to +55 without battery inside	-25 to +55 without battery inside	-25 to +55 without battery inside
Relative Humidity (Operation)	20% to 90%	20% to 90%	20% to 90%
Operating Altitude (m)	3000	3000	3000
Audible Noise (line mode)	<40dB normal mode, <70% load <45dB AVR mode, >70% load	<40dB normal mode, <70% load <45dB AVR mode, >70% load	<40dB normal mode, <70% load <45dB AVR mode, >70% load
Form Factor	Tower	Tower	Tower
Agency			
Compliance	CE, CB Report, EAC, RCM, UKCA	CE, CB Report, EAC, RCM, UKCA	CE, CB Report, EAC, RCM, UKCA
Safety	IEC/EN62040-1	IEC/EN62040-1	IEC/EN62040-1
Transportation	ISTA 2A	ISTA 2A	ISTA 2A
Environmental	RoHS2 / REACH / WEEE	RoHS2 / REACH / WEEE	RoHS2 / REACH / WEEE
Warranty			
Warranty	3 years	3 years	3 years

Technical Specifications - 2-3U Rack/Tower models

Model Number	EDGE-1500IRT2UXL	EDGE-2200IRT2UXL	EDGE-3000IRT2UXL	EDGE-3000IRT3UXL
Rating (VA/W)	1500VA/1350W	2200VA/1980W	3000VA/2700W	3000VA/2700W
Dimensions, mm				
Unit (W x D x H)	438 x 510 x 86	438 x 630 x 86	438 x 630 x 86	438 x 485 x 132
Shipping (W x D x H)	565 x 700 x 240	600 x 760 x 240	600 x 760 x 240	550 x 650 x 282
Weight, kg				
Unit	21	27	34	34
Shipping	26	33	39	39
Input AC Parameters				
Voltage Range Without Battery Operation (230V default)	166 - 278	166 - 278	166 - 278	166 - 278
Frequency Range (Hz)	45 - 65, autosensing	45 - 65, autosensing	45 - 65, autosensing	45 - 65, autosensing
Input Power Connector	IEC60320 C14	IEC60320 C20	IEC60320 C20	IEC60320 C20
Surge Protection (J)	624	624	624	624
Output AC Parameters				
Output Receptacles	3 + 3 IEC60320 C13	3 + 3 IEC60320 C13 + 1 IEC60320 C19	3 + 3 IEC60320 C13 + 1 IEC60320 C19	6 + 3 IEC320 C13 + 1 IEC320 C19
Output Receptacles - Controllable	Yes - 1 group	Yes - 1 group	Yes - 1 group	Yes - 1 group
Output Voltage	200/208/220/230/240	200/208/220/230/240	200/208/220/230/240	200/208/220/230/240
Waveform (Battery Operation)	Pure Sine Wave	Pure Sine Wave	Pure Sine Wave	Pure Sine Wave
Transfer Time	4 - 6 ms Typical	4 - 6 ms Typical	4 - 6 ms Typical	4 - 6 ms Typical
Output Overload (AC Mode)	106% - 125% @ 60 s 126% - 150% @ 50 s 151% - 200% @ 2 s	106% - 125% @ 60 s 126% - 150% @ 50 s 151% - 200% @ 2 s	106% - 125% @ 60 s 126% - 150% @ 50 s 151% - 200% @ 2 s	106% - 125% @ 60 s 126% - 150% @ 50 s 151% - 200% @ 2 s
Efficiency (full load, line mode, type)	97%	97%	98%	98%
Battery				
Type	Valve-regulated, non-spillable, lead acid	Valve-regulated, non-spillable, lead acid	Valve-regulated, non-spillable, lead acid	Valve-regulated, non-spillable, lead acid
Recharge Time (internal batteries, typical)	3 hr @ 90%	3 hr @ 90%	3 hr @ 90%	3 hr @ 90%
Compatible External Battery Cabinet	GXT5-EBC48VRT2UE	GXT5-EBC72VRT2UE	GXT5-EBC72VRT2UE	GXT5-EBC72VRT2UE
Environmental				
Operating Temperature (°C)	0 to 40	0 to 40	0 to 40	0 to 40
Storage Temperature (°C)	-25 to +55 without battery inside	-25 to +55 without battery inside	-25 to +55 without battery inside	-25 to +55 without battery inside
Relative Humidity (Operation)	20% to 90%	20% to 90%	20% to 90%	20% to 90%
Operating Altitude (m)	3000	3000	3000	3000
Audible Noise (line mode)	<40dB normal mode, <70% load <45dB AVR mode, >70% load	<40dB normal mode, <70% load <45dB AVR mode, >70% load	<40dB normal mode, <70% load <45dB AVR mode, >70% load	<40dB normal mode, <70% load <45dB AVR mode, >70% load
Form Factor	Rack / Tower (2U)	Rack / Tower (2U)	Rack / Tower (2U)	Rack / Tower (3U)
Agency				
Compliance	CE, CB Report, EAC, RCM, UKCA	CE, CB Report, EAC, RCM, UKCA	CE, CB Report, EAC, RCM, UKCA	CE, CB Report, EAC, RCM, UKCA
Safety	IEC/EN62040-1	IEC/EN62040-1	IEC/EN62040-1	IEC/EN62040-1
Transportation	ISTA 2A	ISTA 2A	ISTA 2A	ISTA 2A
Environmental	RoHS2 / REACH / WEEE	RoHS2 / REACH / WEEE	RoHS2 / REACH / WEEE	RoHS2 / REACH / WEEE
Warranty				
Warranty	3 years	3 years	3 years	3 years

Vertiv™ Edge single phase UPS

Accessories and Options

Vertiv™ Liebert® MicroPOD – Maintenance Bypass and Output Distribution

The Liebert® MicroPOD (Power Output Distribution) is a maintenance bypass option for UPS products, 3kVA and below. It allows removal of the UPS without powering down the connected equipment.



UPS Model	MicroPOD Model	Input socket	Output receptacles
EDGE-500IRM1U EDGE-1000IRM1U EDGE-1500IRM1U EDGE-1500IRT2UXL	MP2-210K	IEC60320-C14	8 IEC60320-C13
EDGE-2200IRT2UXL EDGE-3000IRT2UXL EDGE-3000IRT3UXL	MP2-220L	IEC60320-C20	6 IEC60320-C13 & 1 IEC60320-C19

Network Communication Cards and Environmental Sensors

Optional Intellislot cards are compatible with all Vertiv™ Edge single phase UPS systems.



Network Communications	IS-UNITY-SNMP	10/100 Mbit Ethernet SNMP, Device Web Page, with MIB and configuration cable
	IS-UNITY-DP	Same as IS-UNITY-SNMP, plus SN Series environmental sensor support
	IS-RELAY	Intellislot Interface Kit for Relay Contacts
	SN-T	Modular with single temperature sensor
Environmental Sensors	SN-TH	Modular with single temperature and humidity sensor
	SN-2D	Modular with two door contact inputs
	SN-3C	Modular with three dry-contact inputs
	SN-Z01	Integrated cable with single temperature sensors
	SN-Z02	Integrated cable with three temperature sensors
	SN-Z03	Integrated cable with three temp. sensors & 1 humidity sensor

External Battery Cabinets

UPS Model	External battery cabinet
EDGE-1500IRT2UXL	GXT5-EBC48VRT2UE
EDGE-2200IRT2UXL EDGE-3000IRT2UXL EDGE-3000IRT3UXL	GXT5-EBC72VRT2UE



Note: Railkit (RMKIT18-32) is not included in the external battery cabinets.

Internal Battery Replacement Kits

UPS Model	Battery replacement kit
EDGE-500IRM1U	EDGE-500I1UBATKIT
EDGE-1000IRM1U	EDGE-1000I1UBATKIT
EDGE-1500IRM1U	EDGE-1500I1UBATKIT
EDGE-750IMT	EDGE-1000IMTBATKIT
EDGE-1000IMT	EDGE-1000IMTBATKIT
EDGE-1500IMT	EDGE-1500IMTBATKIT
EDGE-1500IRT2UXL	EDGE-1500IRT2UBATKIT
EDGE-2200IRT2UXL	EDGE-3000IRT2UBATKIT
EDGE-3000IRT2UXL	EDGE-3000IRT2UBATKIT
EDGE-3000IRT3UXL	EDGE-3000IRT3UBATKIT

Vertiv™ Edge Runtime Tables

Edge 1U Rack Mount Models

Load %	VA	W	EDGE-500IRM1U Internal Batteries Only
100	500	450	5
70	350	315	9
50	250	225	15
20	100	90	42

Load %	VA	W	EDGE-1000IRM1U Internal Batteries Only
100	1000	900	5
70	700	630	9
50	500	450	15
20	200	180	42

Load %	VA	W	EDGE-1500IRM1U Internal Batteries Only
100	1500	1350	5
70	1050	945	9
50	750	675	15
20	300	270	42

Edge Tower models

Load %	VA	W	EDGE-750IMT Internal Batteries Only
100	750	675	5.9
70	525	473	10
50	375	338	17
20	150	135	47

Load %	VA	W	EDGE-1000IMT Internal Batteries Only
100	1000	900	5
70	700	630	9
50	500	450	15
20	200	180	43

Load %	VA	W	EDGE-1500IMT Internal Batteries Only
100	1500	1350	6
70	1050	945	10
50	750	675	17
20	300	270	49

Edge 2U-3U Rack/Tower models

Load %	VA	W	EDGE-1500IRT2UXL Internal Batteries Only	+1 EBC	+3EBCs	+6EBCs
100	1500	1350	6	27	85	177
70	1050	945	10	45	132	266
50	750	675	17	68	192	382
20	300	270	49	179	466	898

Load %	VA	W	EDGE-2200IRT2UXL Internal Batteries Only	+1 EBC	+3EBCs	+6EBCs
100	2200	1980	4.4	26	84	177
70	1540	1386	8	42	130	266
50	1100	990	14	65	192	385
20	440	396	39	170	461	898

Load %	VA	W	EDGE-3000IRT2UXL & EDGE-3000IRT3UXL Internal Batteries Only	+1 EBC	+3EBCs	+6EBCs
100	3000	2700	6	19	61	129
70	2100	1890	10	33	96	196
50	1500	1350	16	51	144	286
20	600	540	43	137	350	672

Runtime tool available at:

<https://www.vertiv.com/en-emea/support/tools-applications/vertiv-ups-interactive-runtime-tools/vertiv-edge-ups/>

