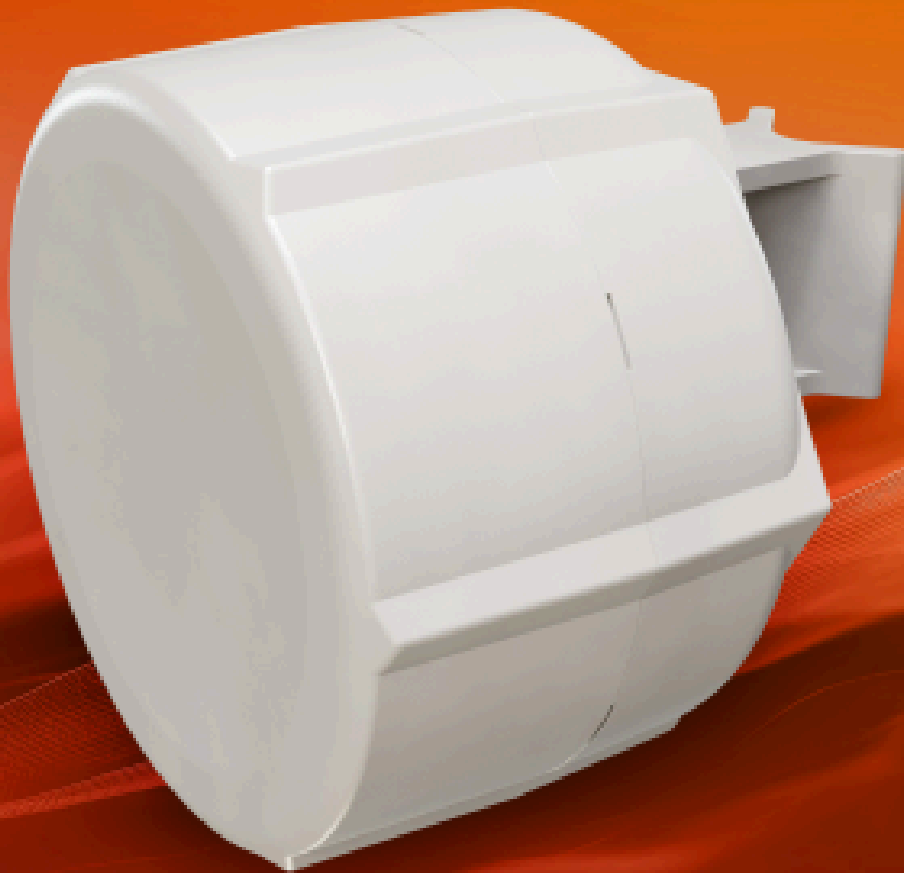




SXT LTE6 kit (SXTR&FG621-EA)

Affordable mobile internet connectivity in remote areas.

Lowest price ever – due to the brand new, cost-effective LTE modem.



CARRIER AGGREGATION
FOR A BETTER SIGNAL!



ROUTEROS V7



OUR LATEST
CAT6 LTE MODEM



2X2 MIMO DL



CONNECT EVEN WHERE
YOUR PHONE FAILS!



2X ETHERNET
PORTS



POE-IN & POE-OUT

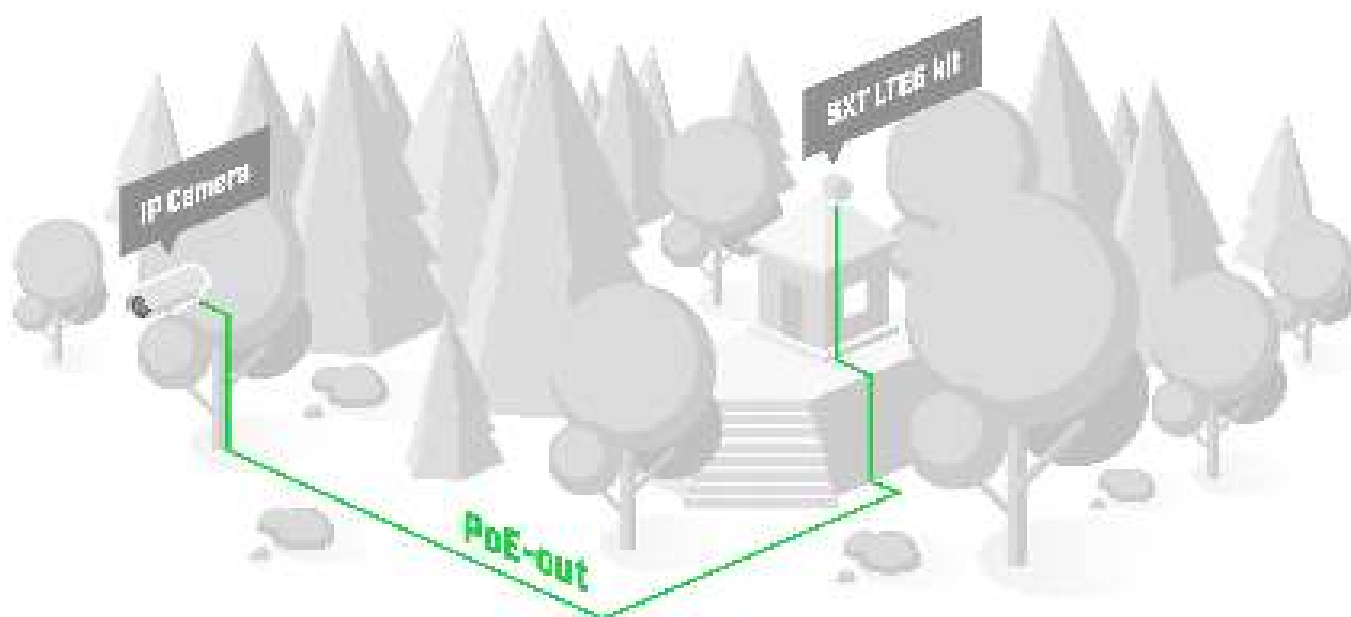


B28 BAND
SUPPORT

SXT LTE6 kit is an update of our timeless device for remote locations that are within cellular network coverage. It features the same modern **Category 6 LTE** chip that you might have seen in our latest devices – like the popular Chateau LTE6 ax! Not only this LTE chip can provide reliable Internet connectivity for your building even where cell phones fail, it also allowed us to drive the price for this kit way down. **Mount an SXT outside your home – and always stay connected!**



*You're getting the classic, fundamental design that has stood the test of time. Weatherproof. Unobtrusive. Snow-resistant. With a modern LTE6 card for uninterrupted mobile connectivity. And a price around 30% lower than the original SXT LTE6 kit. Furthermore, we offer significant project discounts and custom branding options on volume orders. **The best price on the market becomes even better!***



The classic SXT design has been proven to attract less unwanted attention!



We've included **two Micro-SIM slots** – for backup. It never hurts to have extra options when it comes to mobile network coverage. Also, the Category 6 LTE modem enables **carrier aggregation**, allowing SXT to use multiple LTE bands simultaneously. That's a huge advantage when there are a lot of mobile users in the area. It offers better responsiveness in a crowded environment. And higher efficiency for weaker signal situations in the countryside. Win-win! We have seen Internet speed doubling in rural areas after switching to CAT6, so there is no need to wait for cable network expansions.

The unit is equipped with **two Ethernet ports** and PoE functionality: **PoE-in on Ether1, PoE-out on Ether2**. That means **SXT can power other devices or be powered by other devices**, making your cable management so much easier!

Unit is shipped with a 24 V power supply, but can support a wide range of 12-57 V and is 802.3af/at compliant.



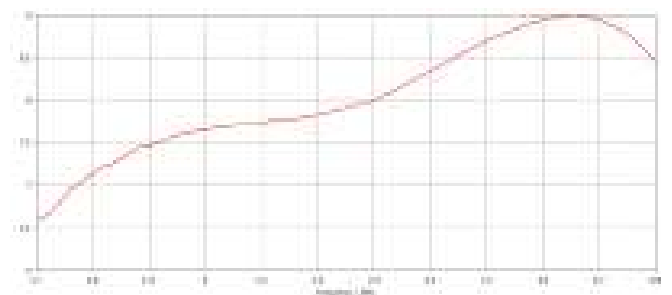
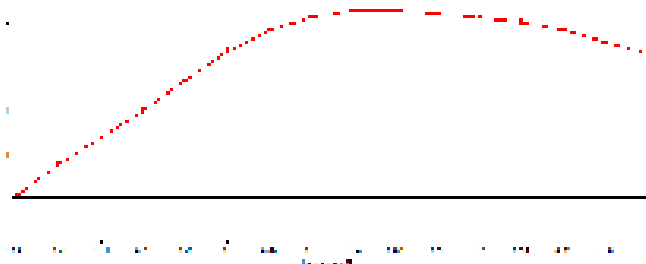
• Specifications

Product code	SXTR&FG621-EA
CPU	QCA9531 650 MHz
CPU architecture	MIPSBE
CPU core count	1
Size of RAM	64 MB
RAM type	DDR2
Storage	16 MB, Flash
Number of 100M Ethernet ports	2
LTE antenna gain	9 dBi
MiniPCIe slots	1
LTE category	6 (300Mbit/s Downlink, 50Mbit/s Uplink)
LTE modem	R11eL-FG621-EA
TAC	86335904
LTE FDD bands	1 (2100MHz) / 3 (1800MHz) / 5 (850MHz) / 7 (2600MHz) / 8 (900MHz) / 20 (800 MHz) / 28 (700MHz)
LTE TDD bands	38 (2600MHz) / 40 (2300MHz) / 41 (2500MHz)
MIMO DL	2x2
MIMO UL	1x1
3G Category	R8 (42.2Mbps Downlink, 11.2Mbps Uplink)
3G Bands	1 (2100MHz) / 3 (1800MHz) / 5 (850MHz) / 8 (900MHz)
Dimensions	140 x 140 x 56 mm
Operating system	RouterOS v7, License level 3
Operating temperature	-40°C to +60°C

• Powering

Number of DC inputs	1
PoE-in	Yes, on Ether1
PoE-Out	Yes on Ether2, max out per port output (input < 30 V): 600 mA, max out per port output (input > 30 V): 400 mA
Supported input voltage	12-57 V (Passive PoE 802.3af/at on Ether1)
Power adapter nominal voltage	24 V
Power adapter nominal current	1.2 A
Max power consumption without attachments	5 W
Max power consumption	22 W

• Antenna gain patterns



- Supported 2xCA LTE bands

1+1/3/5/7/8/20/28	3+3/5/7/8/20/28	5+5/7	7+7/8/20/28
40+40	8+8	38+38	41+41

- Included parts



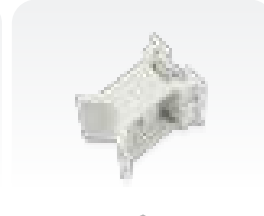
24 V 1.2 A power adapter



Gigabit PoE injector



Metal ring



Pole mounting bracket