

NV7

USER MANUAL

PHANTEKS
VERSION 1.0



THANK YOU FOR CHOOSING

PHANTEKS

■ 1. INTRODUCTION

Introduction	5
D-RGB Lighting Effects	6
Exploded View	7
Accessories	8
Specifications	9

Move Front I/O To Secondary Position	23
D-RGB Cables	24
Installing Storage	25
Internal Cable Management	27
Installing LED Covers	28
Installing GPU Support Bracket	30
External Cable Management	31

■ 2. BUILD YOUR SETUP

Remove External Panels	10
Remove Covers	12
Motherboard Installation	13
Power Supply Installation	14
Fan & Radiator Positions	15
Fan & Radiator Installation	16
Airflow Configurations	20
Power Button & LED	21
Front I/O	22

■ 3. SUPPORT

Contact Us	32
Warranty	33

INTRODUCING THE PHANTEKS NV7

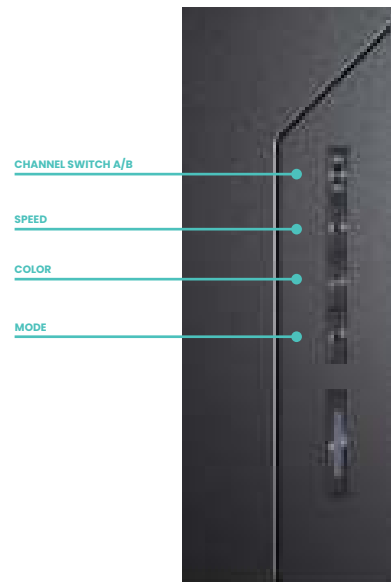
The Phanteks NV7 is a showcase full-tower chassis with a clean look from every side. It is the first installment of the new NV series, which is focused on showcasing your hardware in a premium build-quality chassis. Performance is uncompromised with Ultra-Fine Mesh panels while providing a clean and stylish look with the nearly seamless tempered glass front and left side panels.

THE PHANTEKS TEAM

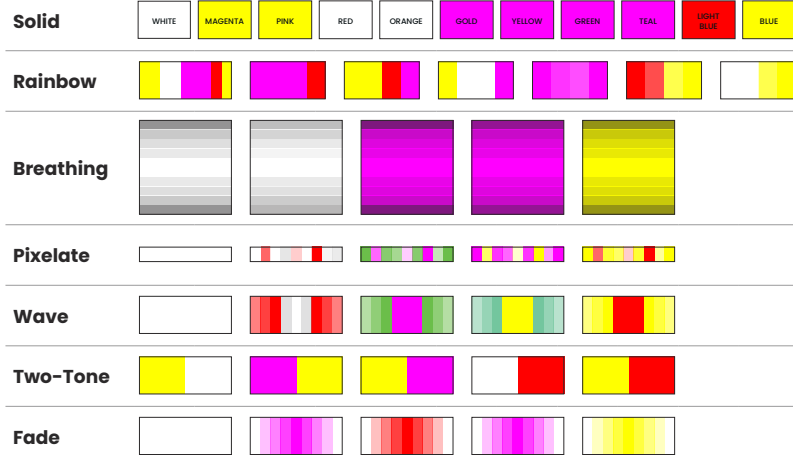


LIGHTING EFFECTS

The Digital-RGB lighting can be easily controlled with the 4 buttons on top of the chassis:



MODES



TURN OFF LEDs

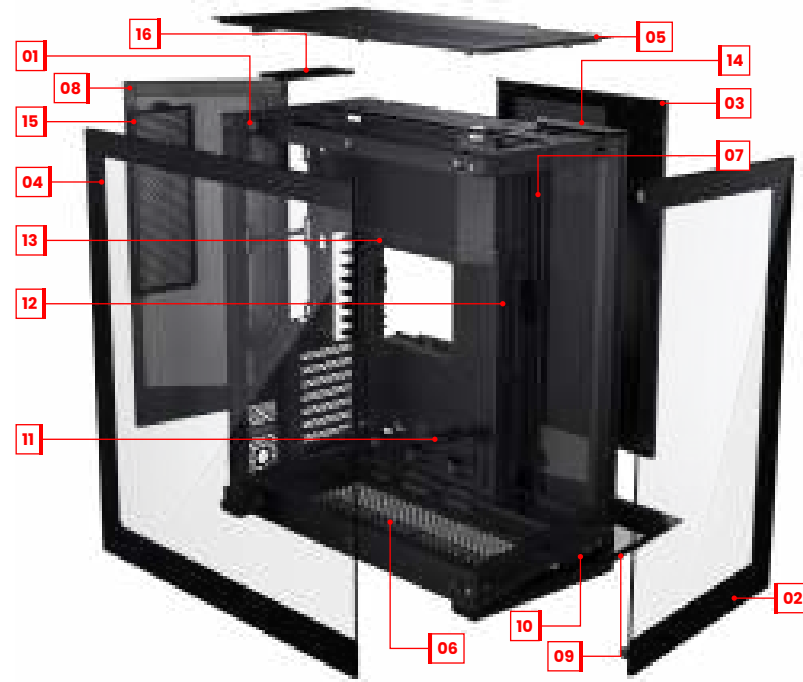
(M) Press and hold the MODE button for two seconds to turn off LEDs, press again to turn it ON

NV7

EXPLODED VIEW

PARTS

- 1 Chassis
- 2 Front glass panel
- 3 Right side mesh panel
- 4 Left glass panel
- 5 Top panel
- 6 Bottom fan bracket
- 7 Side fan bracket
- 8 Rear door
- 9 Bottom dust filter
- 10 Front I/O
- 11 GPU Support Bracket
- 12 Motherboard Cover
- 13 D-RGB Cover
- 14 Top I/O
- 15 Rear Mesh Cover
- 16 Airflow Cover



NV7

GPU SUPPORT BRACKET

Included in accessory box

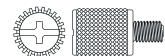


AIRFLOW COVER

2x Included in accessory box



SCREWS

SSD + MOTHERBOARD
SCREW
34XMOTHERBOARD
STAND-OFF
1XANTI-SAG BRACKET
THUMB SCREW
4XEXTRA RIGHT SIDE
PANEL SCREW
1XPSU SCREW
34XHDD LOCKING SCREW
9XSTAND-OFF REMOVAL
TOOL
1X

OTHER ACCESSORIES

- 1x D-RGB Motherboard adapter cable
- 1x Microfiber Cloth
- 6x Zipties
- 1x Manual

CASE SPECIFICATIONS

Dimension (DxWxH)	532 x 253 x 586 mm / 20.9 x 10.0 x 23.1 in
Form Factor	Full Tower
Materials	Steel, Tempered Glass front and side panels
Motherboard Support	ATX, micro-ATX, mini-ITX, E-ATX (up to 277 mm wide), SSI-CEB (up to 290 mm w/o cover)
Front I/O	Power switch, 1x USB 3.2 Gen2 Type-C, 2x USB 3.0, D-RGB Mode, D-RGB Color, D-RGB Speed, D-RGB Channel, Microphone/Headphone

PCI SLOTS & DRIVE BAYS

PCI Slots	8x
Internal 2.5"	6x
Internal 3.5"	2x
FAN	120mm 140mm
Side	4x -
Top	3x -
Bottom	3x 3x
Rear	2x -
RADIATOR	120mm 140mm
Side	up to 360 -
Top	up to 360 -
Bottom	up to 360 up to 280
Rear	up to 240 -

INCLUDED ACCESSORIES

GPU Support Bracket	1x
Airflow Cover	2x
Toolbox	1x
CLEARANCE	
GPU Length	450 mm / 17.7 in
CPU Cooler Height	185 mm / 7.3 in
PSU Length	255 mm / 10.0 in
Side 360 Radiator	Maximum size: 132 x 440 mm
Side 360 Radiator Thickness	65 mm (to GPU)
Top 360 Radiator	Maximum size: 132 x 440 mm
Rear 240 Radiator	Maximum size: 132 x 320 mm

REMOVE EXTERNAL PANELS

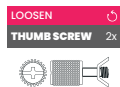
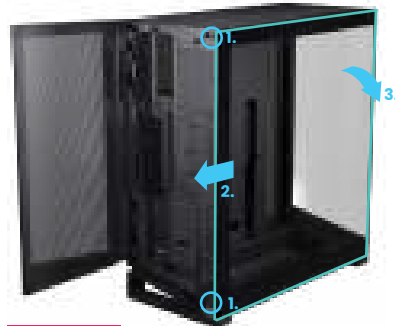
NV7

01 OPEN REAR PANEL



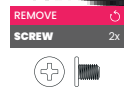
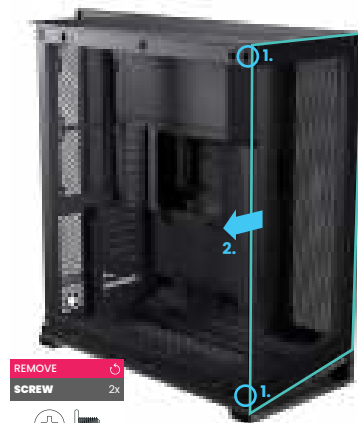
Open the rear door by pulling it from the bottom right corner.

02 REMOVE GLASS SIDE PANEL



Loosen the 2 thumb screws in the rear, slide the glass side panel to the rear and tilt it sideways to remove it.

03 REMOVE GLASS FRONT PANEL

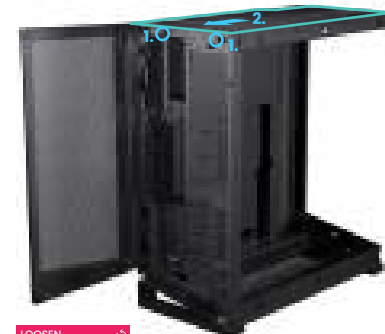


Unscrew the 2 screws from the left side and slide the panel to the left to remove it. Optionally, this panel can be left on during installation.

REMOVE EXTERNAL PANELS

NV7

04 REMOVE TOP PANEL



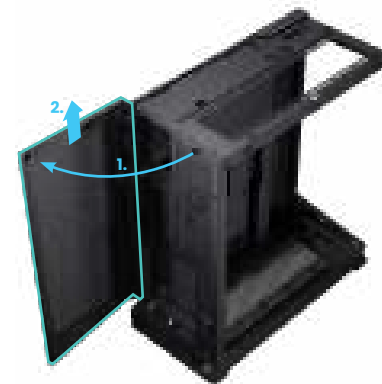
Loosen the 2 thumb screws of the top panel in the rear. Slide the top panel to the rear to remove it.

05 REMOVE RIGHT SIDE PANEL



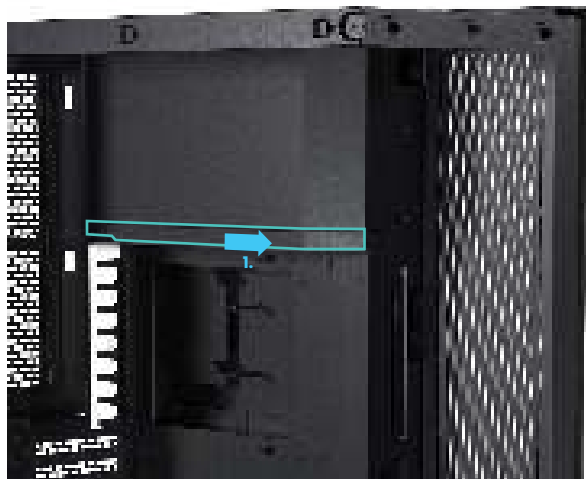
Remove the screw on the top and slide the right panel upwards to remove it.

06 REMOVE REAR DOOR



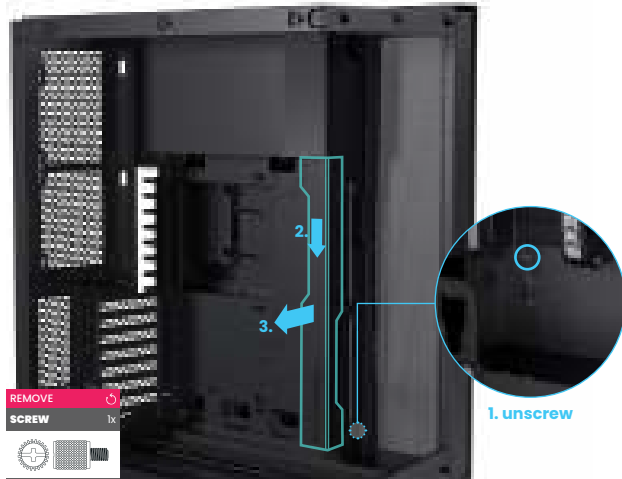
Optionally, remove the back door by sliding it upwards when it is in open position.

01 REMOVE D-RGB COVER

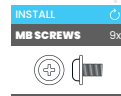


Slide the D-RGB cover to the front of the chassis to remove it.

02 REMOVE MOTHERBOARD COVER



Remove the screw located on the right side of the chassis. Push the motherboard cover down to remove it.



01 ALIGN MOTHERBOARD

Align the motherboard with the screwholes on the chassis' motherboard tray.

02 SECURE MOTHERBOARD

Secure the motherboard with 9x motherboard screws.



PRO TIP

Use the included stand-off tool to easily remove and re-install the motherboard stand-offs for other motherboard form-factors

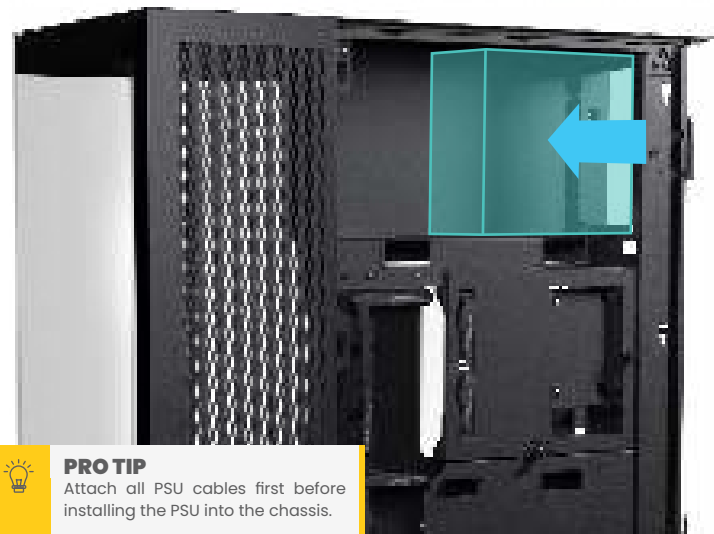


ATTENTION

For Micro-ATX and SSI-CEB check the motherboard instructions for stand-off locations.

01 INSERT PSU

Insert the PSU from the right side of the chassis.

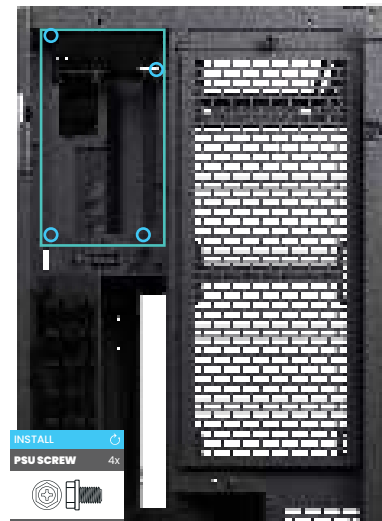


PRO TIP

Attach all PSU cables first before installing the PSU into the chassis.

02 SECURE PSU

Secure the PSU from the rear with 4x PSU screws.



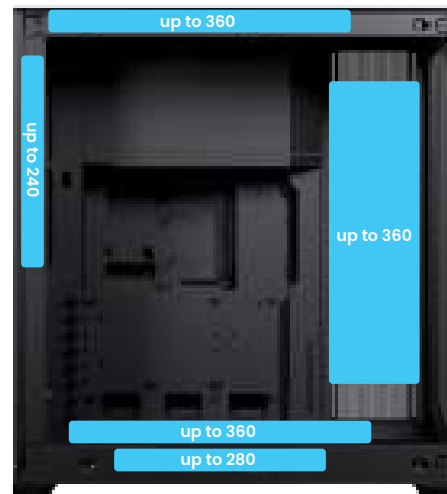
RADIATOR POSITIONS

Side: up to 360

Top: up to 360

Bottom: up to 360/280

Rear: up to 240



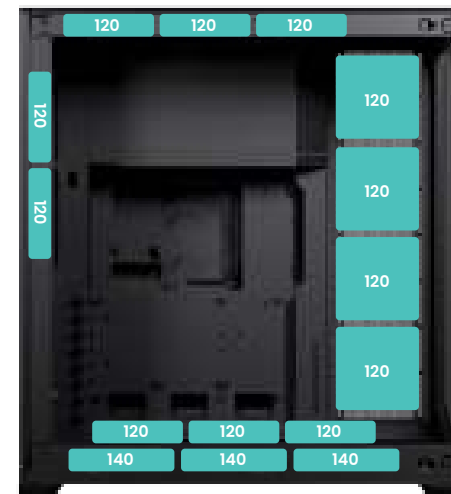
FAN POSITIONS

Side: 4x 120 mm

Top: 3x 120 mm

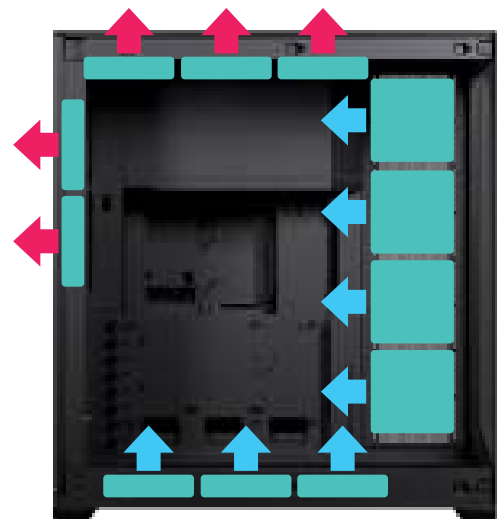
Bottom: 3x 120/140 mm

Rear: 2x 120 mm



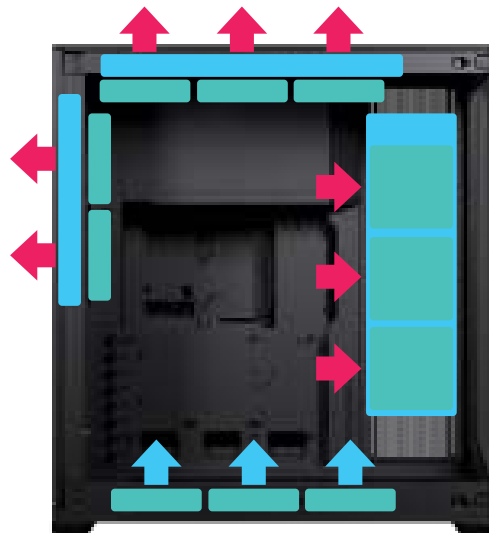
AIR-COOLED CONFIGURATION

Side: Intake Top: Exhaust
Bottom: Intake Rear: Exhaust

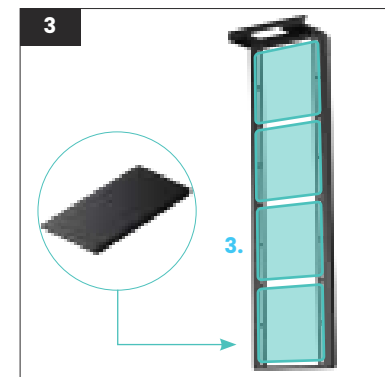
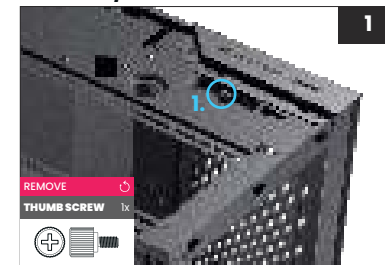


WATER COOLED CONFIGURATION

Side: Exhaust Top: Exhaust
Bottom: Intake Rear: Exhaust



SIDE FAN/RADIATOR BRACKET



01 REMOVE SCREW

Remove the screw located on the top.

02 PULL & TAKE OUT BRACKET

Remove the bracket by pulling the handle at the top of the bracket and take it out.

03 INSTALL FANS/RADIATOR

Install up to 4x 120 fans/360 radiator on the bracket.

04 INSTALL SIDE BRACKET

Re-install the bracket and secure it with the screw located on the top.

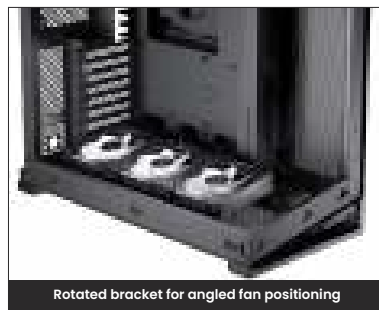
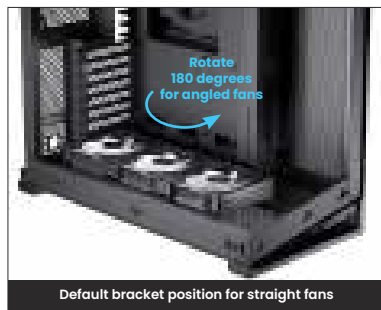
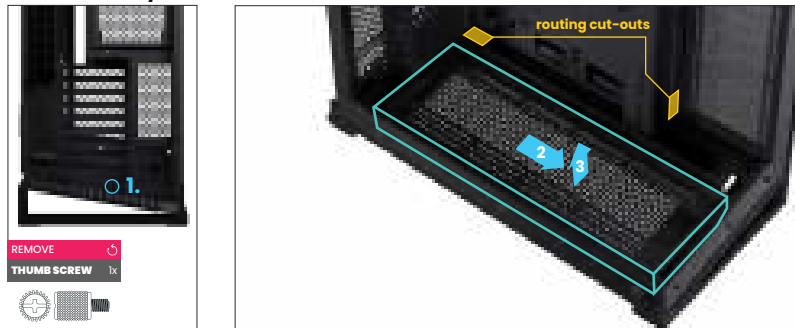
Use the 3 cut-outs to route all fan cables.



PRO TIP

Use the provided airflow cover for optimal airflow. When used, the airflow will be closed off.

BOTTOM FAN/RADIATOR BRACKET



01 REMOVE BOTTOM BRACKET

Release the bracket by removing the rear thumb screw. Slide the bracket to the front to remove it.

02 INSTALL FANS/RADIATOR

Install up to 3x 120mm / 3x 140 mm fans and/or 280/360 radiator on to the bracket.

03 RE-INSTALL BOTTOM BRACKET

Re-install the bracket by sliding it towards the rear and secure it with the thumb screw.

It is possible to install the bracket the other way around for angled fans.

Fan cables can be routed through the cut-outs on the rear and side.

REAR FAN/RADIATOR POSITION

The rear has space for up to 240 radiator and 2x 120 fans. The fans can be installed in front of the rear panel while the radiator can be installed behind the rear panel.

01 REMOVE REAR MESH PANEL

Remove the screw on the rear and remove the mesh panel.

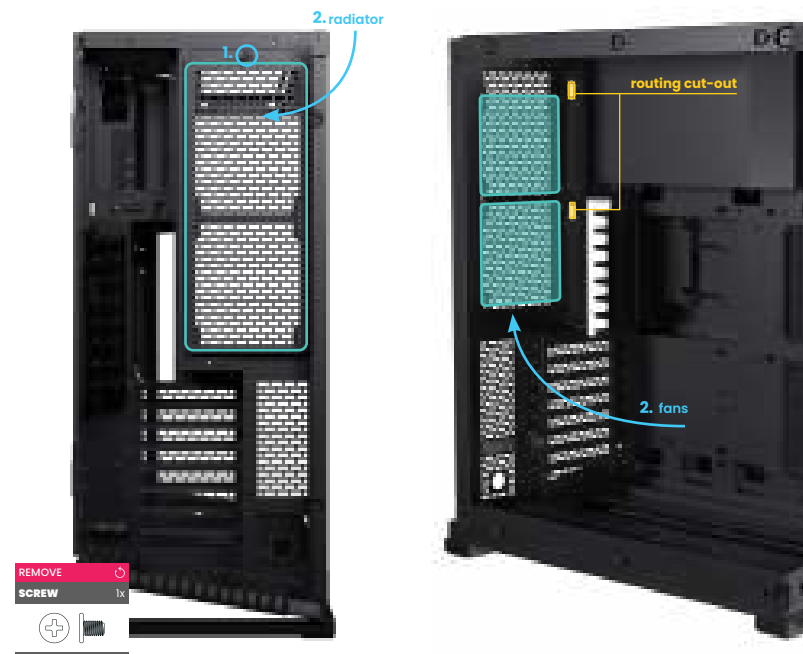
02 INSTALL FANS/RADIATOR

Install up to 2x 120 fans on the inside of the rear chassis. A 240 radiator can be installed on the outside of the rear chassis.

03 RE-INSTALL REAR MESH PANEL

If no radiator is installed, re-install the rear mesh panel.

Fan cables can be routed through the cut-outs on the rear.



FAN & RADIATOR INSTALLATION

TOP FAN/RADIATOR POSITION

01 INSTALL FANS/RADIATOR

Up to 3x 120 fans/360 radiator can be directly installed into the top of the chassis.

Fan cables can be routed through the cut-outs on the top.



NV7

POWER BUTTON AND LED

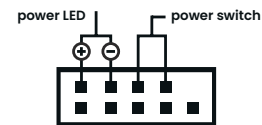
NV7

01 CONNECT POWER BUTTON

Connect the power switch module to the motherboard.



power switch/power LED module



motherboard header diagram



I/O INTERFACE

- USB 3.1 GEN 2 TYPE-C (1x)
- USB 3.0 TYPE-A (2x)
- Headphone/microphone (1x)

CONNECT I/O CABLES TO MOTHERBOARD

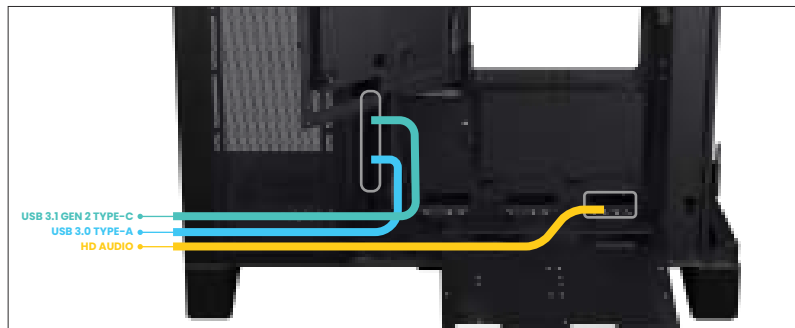
01 CONNECT USB 3.1 GEN 2 TYPE-C



02 CONNECT USB 3.0 TYPE-A



03 CONNECT HD AUDIO



STEPS TO MOVE I/O TO THE REAR

01 REMOVE BOTTOM FAN BRACKET

Remove the bottom fan bracket.

02 REMOVE SCREWS

Unscrew 2x screws located inside the chassis.

03 SLIDE I/O UNIT OUT

Slide the I/O unit forward and remove it.

04 PUSH OUT COVER

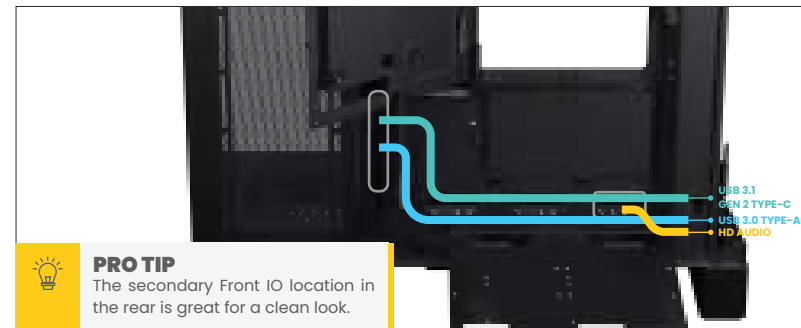
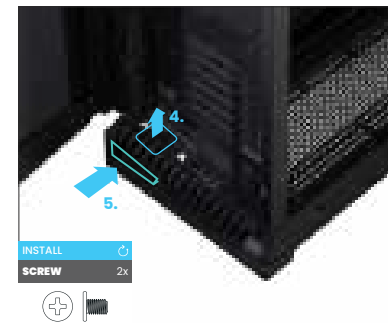
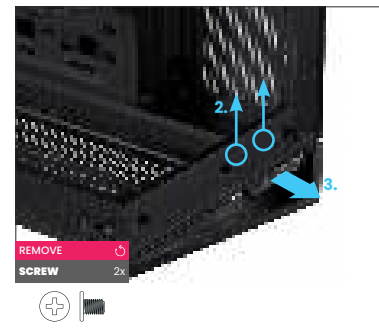
Push the cover, located on the rear bottom, up to remove it.

05 SLIDE I/O UNIT IN

Pull the cables through the cutout and slide the I/O unit into the rear position.

06 SECURE I/O UNIT

Secure the I/O unit in its new position with 2x screws.

**PRO TIP**

The secondary Front IO location in the rear is great for a clean look.

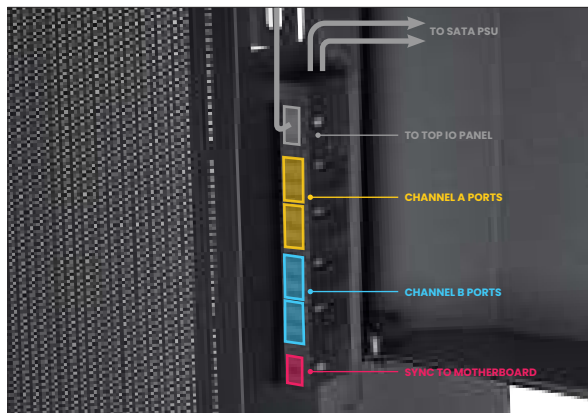
USB 3.1 GEN 2 TYPE-C
USB 3.0 TYPE-A
HD AUDIO

D-RGB CABLES

D-RGB CONTROLLER

The built-in D-RGB controller has 2 channels (A & B). Both channels, each with 2 available D-RGB ports, can be controlled separately with the control buttons on the front I/O.

max 7A per channel, max 4A per port



LIGHTING EFFECTS & CONTROLS

D-RGB Lighting effects and control instructions are described on page 6.

NV7

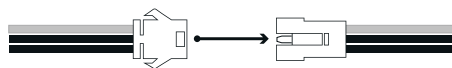
01 CONNECT THE SATA CABLES

Connect the 2x SATA cables to the power supply.



02 EXPAND WITH OTHER D-RGB PRODUCTS

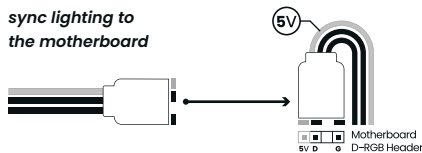
To Phanteks Digital-RGB products (JST connector)



03 SYNC LIGHTING TO MOTHERBOARD (OPTIONAL)

The D-RGB to motherboard cable is included in the accessory box.

sync lighting to the motherboard



INSTALLING STORAGE

NV7

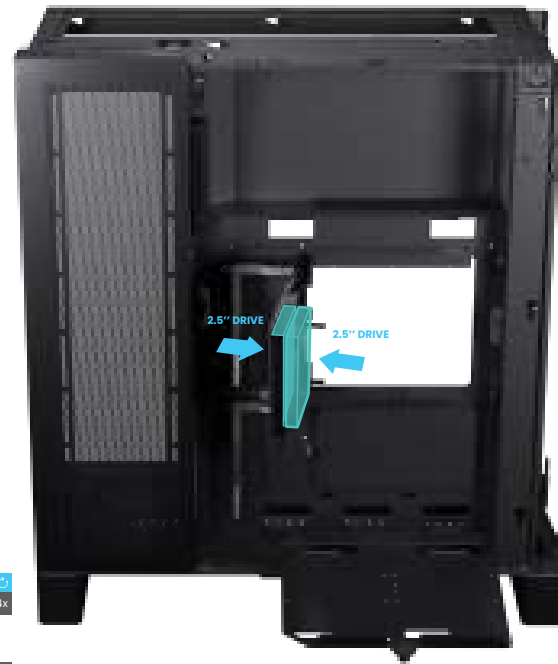
TOP DOOR STORAGE

01 OPEN TOP DOOR

Loosen the thumb screw to open the top door.

02 INSTALL 2.5" DRIVES

Install up to 2x 2.5" drives with 2x SSD screws per SSD.



BOTTOM DOOR STORAGE

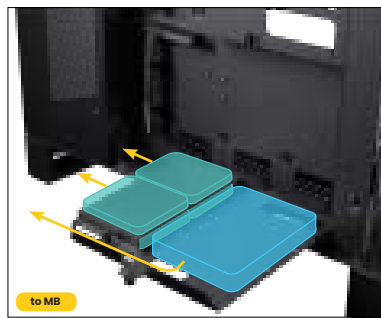
01 OPEN BOTTOM DOOR

Loosen the thumb screw to open the door.

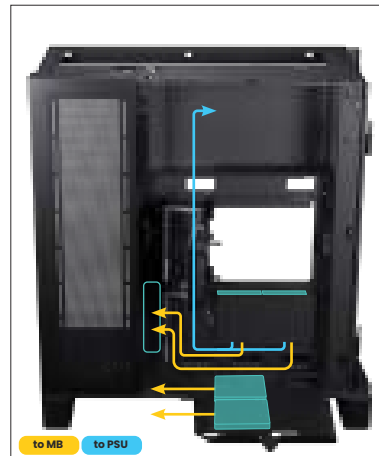
02 INSTALL DRIVES

The bottom door can be used for one of the following storage options:
1x 3.5" + 4x 2.5" | 4x 2.5" | 2x 3.5"

OPTION A- 1X 3.5" + 4X 2.5"

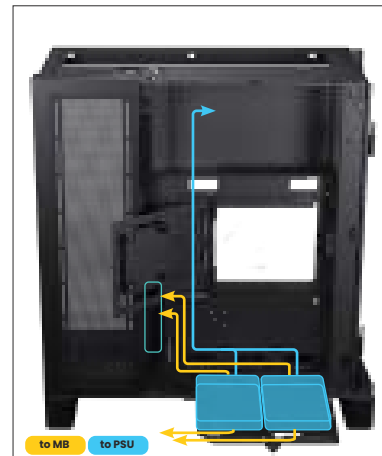


OPTION B - 4X 2.5"



01. Reposition the 2.5" drive bracket to the rear of the motherboard.
02. Install 2x 2.5" drives on the door and 2x 2.5" drives on the bracket

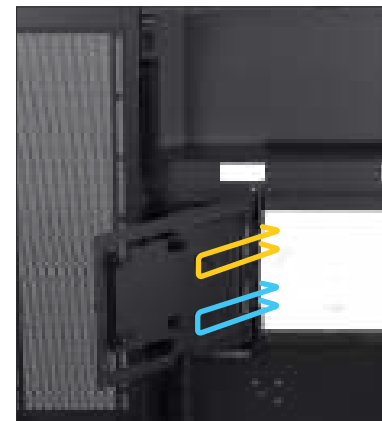
OPTION C - 2X 3.5"



01. Remove the 2.5" drive bracket completely.
02. Install 2x 3.5" drives with cables routed to the top

PSU CABLE MANAGEMENT

The PSU cables can be routed like the image below for clean cable management. Open the top cover door to loop the CPU & MB cables to get rid of excessive cable length.

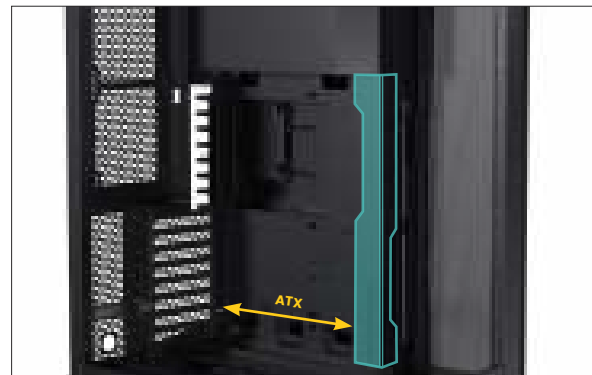


Loop excessive cable length on the inside of the top cover door.



01 INSTALL MOTHERBOARD COVER

The motherboard cover can be installed in two ways:

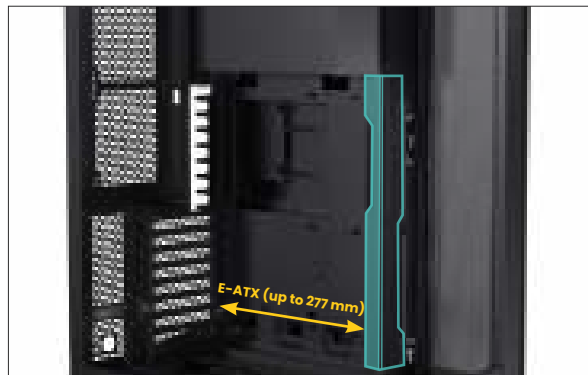


Option 1: Default

The first option covers a bit more of the cables attached to the motherboard, and is a great fit for standard sized ATX motherboards.

Option 3: Remove Cover

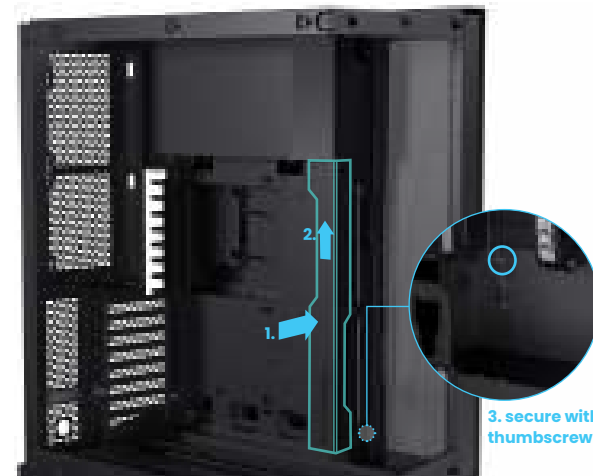
For even larger motherboards and maximum clearance, it is recommended to remove this cover completely.



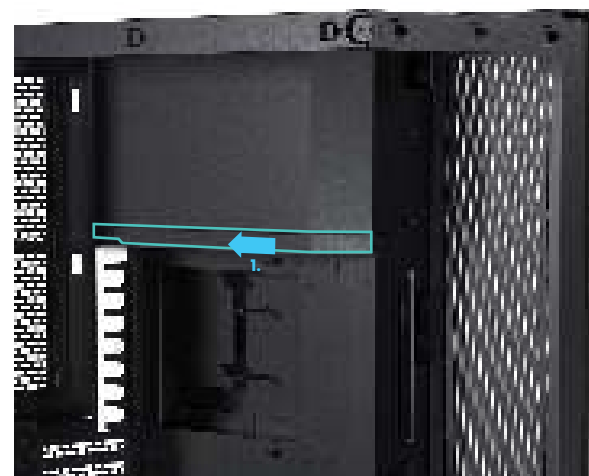
Option 2: Reversed

For the second option, the cover is installed in reversed position. This covers less of the motherboard and allows more clearance for E-ATX motherboards (up to 277 mm).

02 INSTALL D-RGB COVER



After choosing the preferred position, align the motherboard cover (1) and slide upwards (2). Secure it with the thumb screw through the right side of the chassis (3).



Slide the D-RGB cover to the rear of the chassis to install it.

INSTALLING GPU SUPPORT BRACKET (OPTIONAL)

NV7

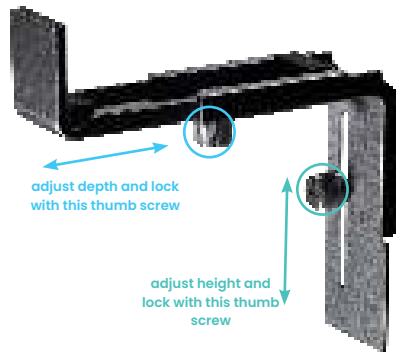
01 INSTALL BRACKET

Install the GPU support bracket on the motherboard cover with 1x thumb screw.



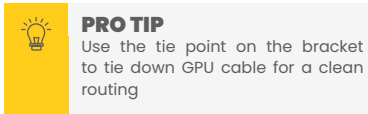
02 ADJUST HEIGHT

Adjust to the correct height for your GPU and use the thumb screw to secure it.



03 ADJUST DEPTH

Adjust the depth of the bracket to hold the GPU tightly and lock with 1x thumb screw underneath the bracket.

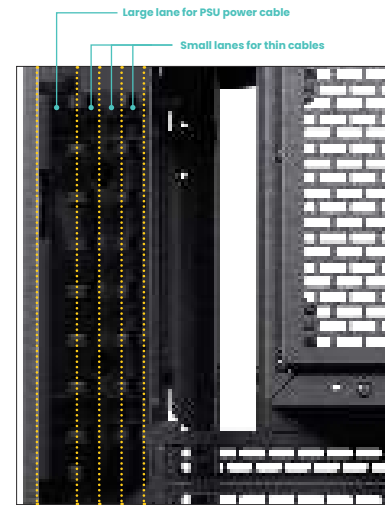


EXTERNAL CABLE MANAGEMENT

NV7

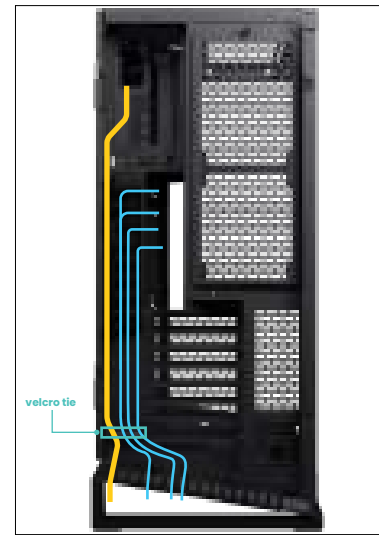
CABLE LANES

External cables can be managed with the cable lanes behind the rear door. The left lane is larger and can be used for thick cables. The other three lanes are smaller and made for thin cables.



VELCRO TIE

Use the velcro tie on the bottom to tie all cables down to the chassis.



COMB OR GROMMET

There are two options for the cables to leave the case:

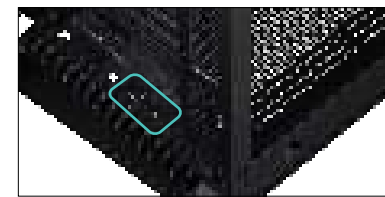
Option 1: Rear comb

The rear comb can be used to separate each cable to leave the case neatly.



Option 2: Bottom grommet

Alternatively, the grommet on the bottom of the chassis can be used to lead the cables out.



As a Phanteks customer, you are priority number one. We have a dedicated team of employees across the globe working hard every day to make sure we deliver the superior experience you deserve. We are here for you. If you have a question or a concern about our products, we have numerous ways you can reach us. Please choose one most convenient for you to connect with our team.

INTERNATIONAL

CUSTOMER SUPPORT

Facebook
@phanteks

Instagram
@phanteks

RMA & TECHNICAL SUPPORT

E-mail
support@phanteks.com

AMERICAS

RMA & TECHNICAL SUPPORT

Hours	Phone Number	E-mail
Monday - Friday 09:00 - 05:00 PST	+1 (909) 598 2115	support@phanteksusa.com

For up-to-date information please check www.phanteks.com

Phanteks warrants its products to be free from defects in material and workmanship during the warranty period; when given normal, proper and intended usage. If a product proves to be defective in material or workmanship during the warranty period, Phanteks will, at its sole option, repair or replace the product with same product or similar product. The replacement product assumes the remaining warranty of the original product or 30 days, whichever provides longer coverage for the customer.

WARRANTY

1. I/O Ports
2 Years

2. LED Lighting
2 Years

3. Buttons
2 Years

4. Chassis
5 Years

5. External Panels
5 Years

Please check www.phanteks.com/Warranty for more information.

FOLLOW US

SOCIAL MEDIA



Instagram

Phanteks



Facebook

Phanteks



YouTube

Phanteks



Twitter

@phanteks

PHANTEKS