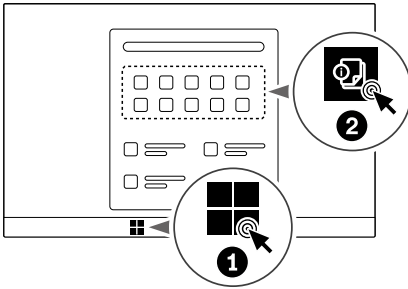


Lenovo ThinkStation

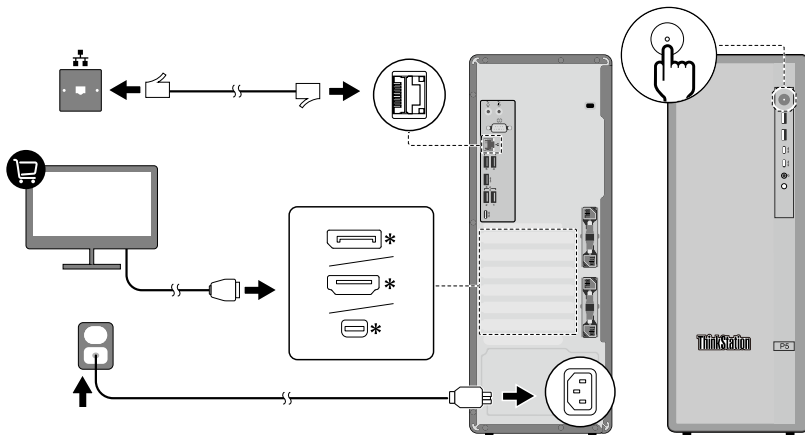
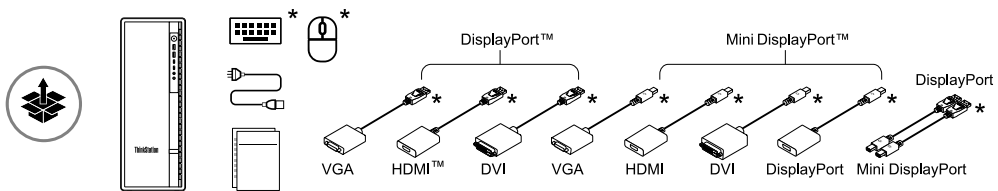
ThinkStation P5 Setup Guide


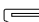


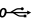



User Guide Access



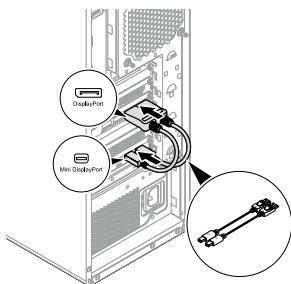
Turn to User Guide for USB transfer rate and more product information.

Overview



-  DisplayPort*
-  HDMI*
-  Mini DisplayPort*
-  x2 USB-A 2.0
-  x3 USB-A 3.2 Gen 2
-  x2 USB-C® (3.2 Gen 2 X 2)
-  x2 USB-C (3.2 Gen 2)*
-  x2 USB-A 3.2 Gen 2*

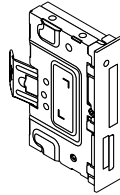
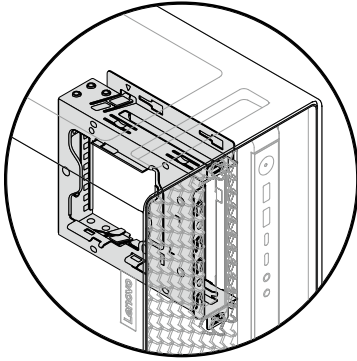
Thunderbolt™ 4 card



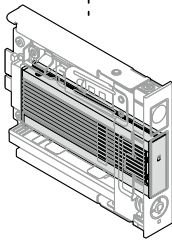
To use the Thunderbolt 4 card, connect the cable as illustrated.

*For selected models

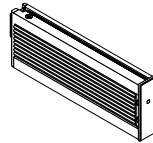
Front bay



15-in-1 media card reader*



Flex module*



M.2 solid-state drive box*

Note: The M.2 solid-state drive box is hot-swappable.

*For selected models

European Union (EU) / United Kingdom (UK) — radio frequency and power

This radio equipment operates with the following frequency bands and maximum radio-frequency power:

Technology	Frequency band	Maximum transmit power
WLAN 802.11b/g/n/ax	2400 - 2483.5 MHz	< 20 dBm
WLAN 802.11a/n/ac/ax	5150 - 5725 MHz	< 23 dBm

Technology	Frequency band	Maximum transmit power
WLAN 802.11a/n/ac/ax	5725 - 5875 MHz	< 13.98 dBm
WLAN 802.11ax	5945 - 6425 MHz	< 23 dBm
Bluetooth BR/EDR/LE	2400 - 2483.5 MHz	< 20 dBm

Note: Not all wireless bands may be enabled depending on your product configuration. Usage of this device is limited to indoor locations in the bands 5150 - 5350 MHz and 5945 - 6425 MHz.

Fourth Edition (June 2024)

© Copyright Lenovo 2024.

LENOVO, LENOVO logo, ThinkStation, and ThinkStation logo are trademarks of Lenovo. DisplayPort and Mini Display are trademarks of the Video Electronics Standards Association. The terms HDMI and HDMI High-Definition Multimedia Interface are trademarks or registered trademarks of HDMI Licensing LLC in the United States and other countries. USB-C is a registered trademark of USB Implementers Forum. All other trademarks are the property of their respective owners.

LIMITED AND RESTRICTED RIGHTS NOTICE: If data or software is delivered pursuant to a General Services Administration "GSA" contract, use, reproduction, or disclosure is subject to restrictions set forth in Contract No. GS-35F-05925.

Reduce
Reuse
Recycle



For FSC Mix logo only