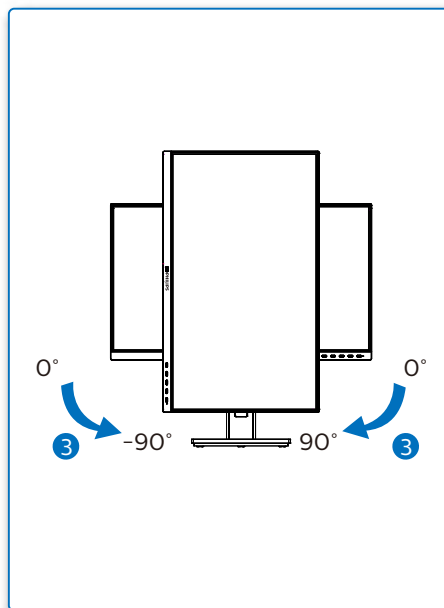
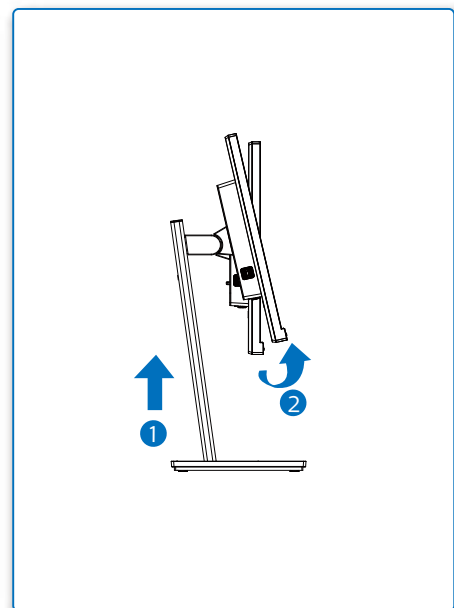
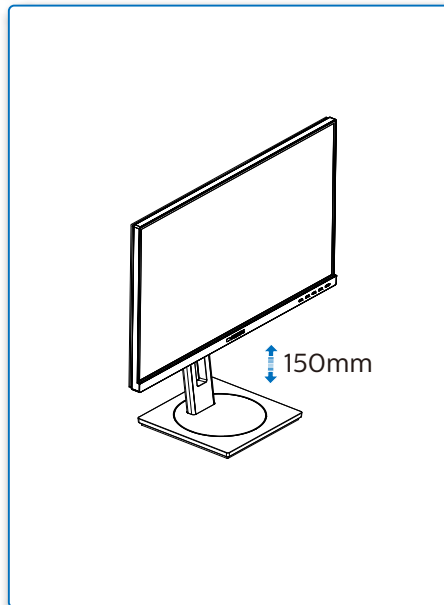
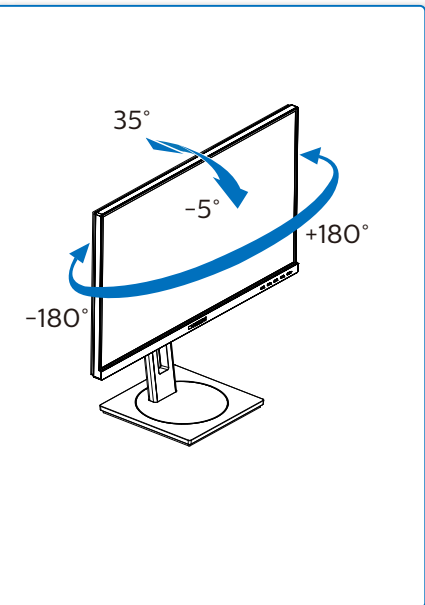
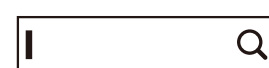


4



Register your product and get support at  
[www.philips.com/support](http://www.philips.com/support)



FAQ

Software  
SmartControlUser  
Manual

Version: M10245BQ1T

2021 © TOP Victory Investments Ltd. All rights reserved.

This product has been manufactured by and is sold under the responsibility of Top Victory Investments Ltd., and Top Victory Investments Ltd. is the warrantor in relation to this product. Philips and the Philips Shield Emblem are registered trademarks of Koninklijke Philips N.V. and are used under license.

Specifications are subject to change without notice.

**HDMI**

The terms HDMI, HDMI High-Definition Multimedia Interface, and the HDMI Logo are trademarks or registered trademarks of HDMI Licensing Administrator, Inc.

[www.philips.com](http://www.philips.com)Energy Labelling  
245B1

Printed in China



H41G78S281335E

**PHILIPS**

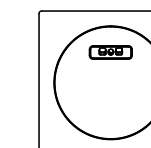
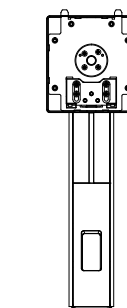
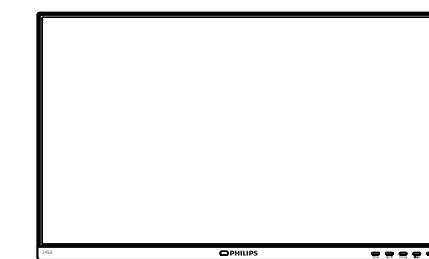
B Line

245B1



# Quick Start

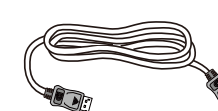
Register your product and get support at  
[www.philips.com/welcome](http://www.philips.com/welcome)



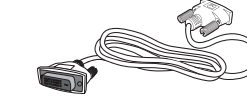
Power



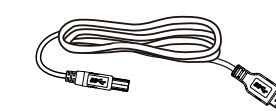
\*HDMI



\*DP



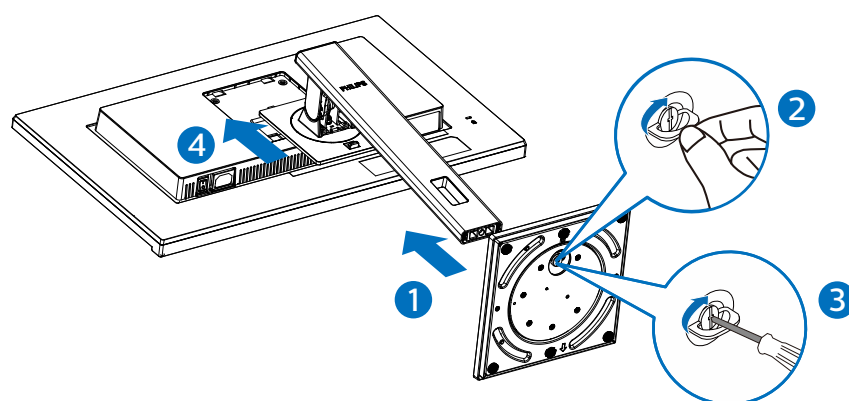
\*DVI



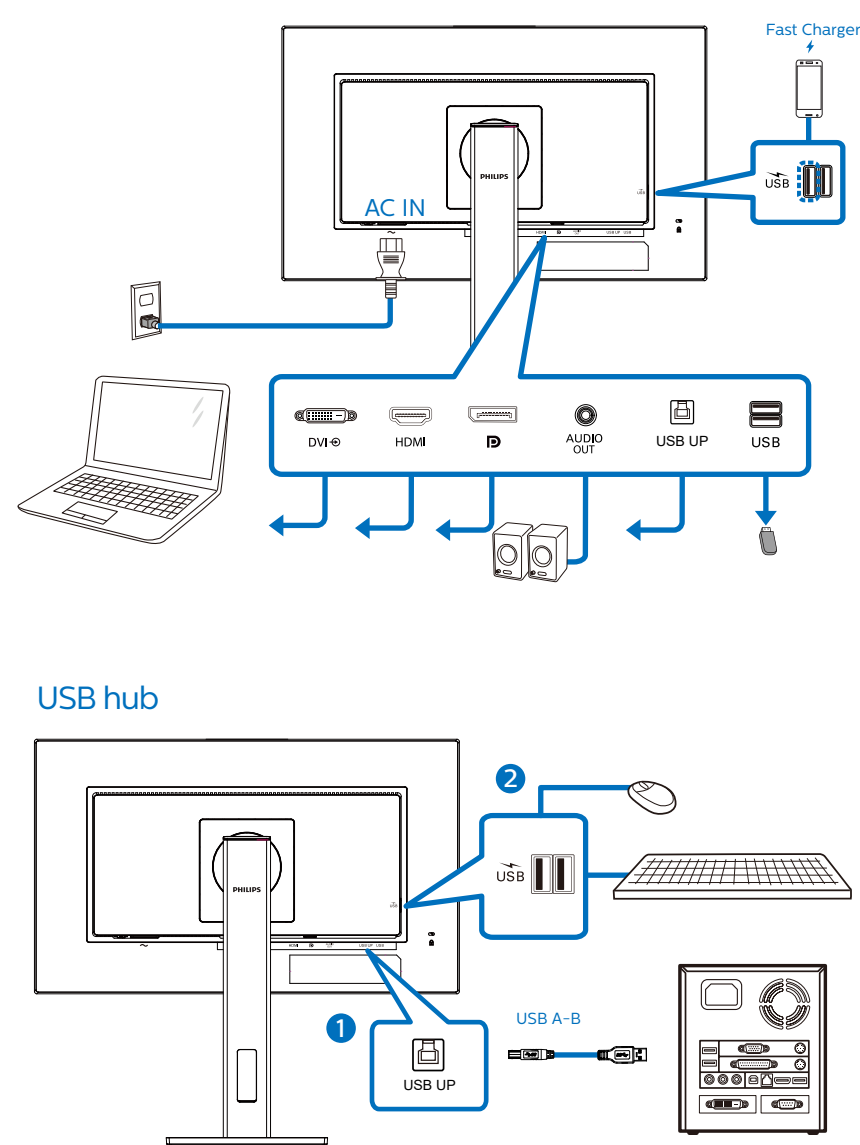
\*USB A-B

\*Different according to region  
Display design may differ from that illustrated

1



2



3

