



## Samsung The Frame GQ65LS03DAU 165,1 cm (65") 4K Ultra HD Smart TV Wifi Noir

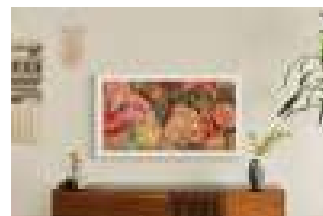
Marque : Samsung

Famille de produit: The Frame

Code produit: GQ65LS03DAUXZG

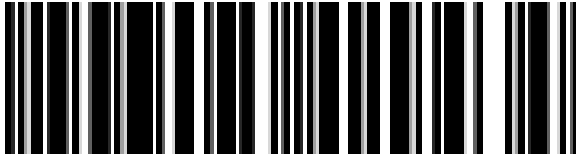
Nom du produit : GQ65LS03DAU

Samsung The Frame GQ65LS03DAU. Taille de l'écran: 165,1 cm (65"), Résolution de l'écran: 3840 x 2160 pixels, Type HD: 4K Ultra HD, Technologie d'affichage: QLED, Forme d'écran: Plat, Rétroéclairage LED: Double LED. Smart TV. Mouvement d'interpolation technologie: Motion Xcelerator, Temps de réponse: 6 ms, Format d'image: 16:9. Format du système de signal numérique: DVB-T2 HD. Wifi, Ethernet/LAN. Couleur du produit: Noir



Display		Performance	
Display diagonal *	165.1 cm (65")	High Dynamic Range (HDR) supported *	✓
HD type *	4K Ultra HD	IPV6 support	✓
Display technology *	QLED	Game features	Auto Low Latency Mode (ALLM), Dynamic Black EQ, Game Motion Plus, Gaming Hub, Mini Map Zoom, Super Ultra Wide Game View, Surround Sound
LED backlight	✓		
LED backlighting type	Dual LED	SmartThings app support	✓
Screen shape *	Flat	Adaptive picture	✓
Native aspect ratio *	16:9	Multi View	✓
Response time	6 ms	Smartphone/tablet remote support	✓
Motion interpolation technology *	Motion Xcelerator	USB recording	✓
Native refresh rate	50 Hz	ConnectShare (HDD)	✓
Display refresh rates supported	120 Hz	ConnectShare (USB)	✓
Viewing angle, horizontal	89°	Ports & interfaces	
Viewing angle, vertical	89°	HDMI version	2.1
Display resolution *	3840 x 2160 pixels	HDMI Quick Switch	✓
Display diagonal (metric)	163 cm	Audio Return Channel (ARC)	✓
Anti-glare screen	✓	PC in (D-Sub) *	✗
TV tuner		Ethernet LAN (RJ-45) ports	1
Tuner type *	Analog & digital	USB 2.0 ports quantity *	2
Digital signal format system *	DVB-T2 HD	Digital audio optical out	1
Auto channel search	✓	RS-232C ports	1
Smart TV		RF ports quantity	3
Smart TV *	✓	Common interface (CI) *	✓
Internet TV *	✓	Common interface Plus (CI+) *	✓
Operating system installed *	Tizen	Common interface Plus (CI+) version	1.4
Timeshift	✓	HDMI ports quantity *	4
Apple AirPlay 2 support	✓	Consumer Electronics Control (CEC)	Anynet+
Sound mirroring	✓	Management features	
Hybrid Broadcast Broadband TV (HbbTV)	✓	Voice guide	✓
Hybrid Broadcast Broadband TV (HbbTV) version	2.0.3	Electronic Programme Guide (EPG)	✓
Universal guide	✓		
Video apps	Samsung TV Plus		

<b>Audio</b>		<b>Management features</b>	
Number of speakers *	2	On Screen Display (OSD)	✓
RMS rated power *	20 W	Auto power off	✓
Audio output channels	2.2 channels	Works with Amazon Alexa	✓
Audio decoders	Dolby Atmos	Works with Samsung Bixby	✓
Audio pre-selection descriptor	✓	<b>Power</b>	
Music wall	✓	Power consumption (typical) *	109 W
Active voice amplifier (AVA)	✓	Power consumption (standby) *	0.5 W
Adaptive sound+	✓	Energy efficiency class (SDR) *	G
Multiroom	✓	Energy efficiency class (HDR) *	G
Multiroom audio technology	Samsung Multiroom Link	Energy consumption (SDR) per 1000 hours *	109 kWh
Enhanced Audio Return Channel (eARC)	✓	Energy consumption (HDR) per 1000 hours *	229 kWh
<b>Network</b>		AC input voltage	220-240 V
Wi-Fi *	✓	AC input frequency	50/60 Hz
Wi-Fi standards	Wi-Fi 5 (802.11ac)	Energy saving mode	✓
Bluetooth *	✓	Energy efficiency scale	A to G
Bluetooth version	5.2	<b>Brand-specific features</b>	
Ethernet LAN *	✓	Samsung technologies (AV/TV)	
Web browser	✓		
<b>Design</b>		AMD FreeSync™ Premium, Adaptive Sound Pro, Adjustable Stand, Art Mode, Customisable Bezels, Dolby Atmos®, Dual LED, EyeComfort Mode, LED Clear Motion, Q-Symphony, Quantum HDR, Quantum Processor 4K, Samsung TV Plus, Smart Calibration, Smart TV powered by Tizen, Supreme UHD Dimming, Wide Viewing Angle, Works With Amazon Alexa	
Product colour *	Black	<b>Weight &amp; dimensions</b>	
VESA mounting *	✓	Width (with stand)	1456.8 mm
Panel mounting interface	400 x 300 mm	Depth (with stand)	260.9 mm
Introduction year	2024	Height (with stand)	868.9 mm
Stand type	Legs stand	Weight (with stand)	22.8 kg
<b>Performance</b>		Width (without stand)	1456.8 mm
High Dynamic Range (HDR) technology	High Dynamic Range 10+ Adaptive (HDR10 Plus Adaptive), High Dynamic Range 10+ Gaming (HDR10 Plus Gaming), Quantum HDR	Depth (without stand)	24.9 mm
Game mode	✓	Height (without stand)	831.9 mm
Teletext function	✓	Weight (without stand)	22.4 kg
Subtitles function	✓	Stand width	107.7 cm
Eco sensor	✓	Stand depth	26.1 cm
Brightness detection	✓	<b>Packaging data</b>	
AI Upscale	✓	Package width	1614 mm
TV key support	✓	Package depth	191 mm
Backlight dimming technology	Supreme UHD Dimming	Package height	950 mm
Picture processing technology	Samsung Auto Motion Plus, Samsung Real Depth Enhancer	Package weight	20.9 kg
		Package type	Box
		<b>Packaging content</b>	
		Desktop stand	✓
		Mounting kit	✓
		Cables included	AC
		Remote control included	✓
		<b>Other features</b>	
		One Connect port	✓



8806095429434

Disclaimer. The information published here (the "Information") is based on sources that can be considered reliable, typically the manufacturer, but this Information is provided "AS IS" and without guarantee of correctness or completeness. The Information is only indicative and can be changed at any time without notification. No rights can be based on the Information. Suppliers or aggregators of this Information do not accept any liability with regard to the content of (web)pages and other documents, including its Information. The publisher of the Information can not be held liable for the content of 3rd party websites that are linking this Information or are linked to from this Information. You as the User of the Information are solely responsible for the choice and usage of this Information. You are not entitled to transfer, copy or otherwise multiply or distribute the Information. You are obliged to follow the directions of the copyright owner(s) with regard to the use of the Information. Exclusively Dutch law is applicable. With regard to price and stock data on the site, the publisher followed a number of starting points, which are not necessarily relevant for your private or business circumstances. Therefore, the price and stock data are only indicative and are subject to changes. You are personally responsible for the way you use and apply this information. As a user of the Information or sites or documents in which this Information is included, you will adhere to standard fair use including avoidance of spamming, ripping, intellectual-property violations, privacy violations, and any other illegal activity.

Publication date: 09-APR-2025. Prints or copies of Information are only valid on the printed Publication date