

Samsung 43" Crystal UHD Signage QMC

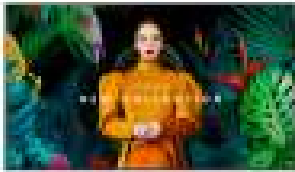
Merk : Samsung

Productfamilie: QMC

Artikelcode:
LH43QMCEPGCXEN

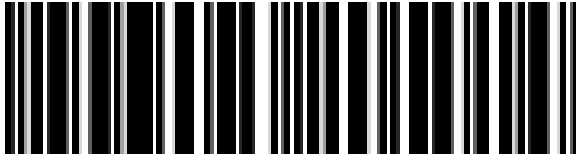
Productnaam : 43" Crystal
UHD Signage QMC

43", IPS, 4K UHD (3840 x 2160), 500 nit, 1200:1, 178/178, 8 ms, WiFi, Bluetooth, RJ-45, HDCP, HDMI, DP, RS232, AC 100-240V, 50/60Hz, 969.5 x 557.8 x 28.5 mm, 8.8 kg
Samsung 43" Crystal UHD Signage QMC. Product design: Digitale signage flatscreen.
Beeldschermdiagonaal: 109,2 cm (43"), Display technologie: LCD, Resolutie: 3840 x 2160 Pixels, Helderheid: 500 cd/m², HD type: 4K Ultra HD. Wi-Fi. Operating hours (hours/days): 24/7. Inclusief besturingssysteem: Tizen 7.0. Kleur van het product: Zwart



Display		Design	
Panel type	IPS	Bezel width (top)	1.15 cm
Display diagonal *	109.2 cm (43")	Bezel colour	Charcoal Black
Display technology *	LCD	Anti-glare screen	✓
Display resolution *	3840 x 2160 pixels	Mounting type	Wall
Display brightness *	500 cd/m²	Performance	
HD type *	4K Ultra HD	Purpose *	Universal
Touchscreen *	✗	Operating hours (hours/days)	24/7
Response time	8 ms	HDCP	✓
Contrast ratio (typical)	1200:1	HDCP version	2.2
Dynamic contrast ratio marketing name	Mega Contrast	Power	
Viewing angle, horizontal	178°	Power consumption (typical) *	121 W
Viewing angle, vertical	178°	Power consumption (sleep)	0.5 W
Pixel pitch	0.245 x 0.245 mm	Energy efficiency class (SDR)	G
Display diagonal (metric)	108 cm	Energy consumption (SDR) per 1000 hours	74 kWh
Horizontal scan range	30 - 81 kHz	AC input voltage	100 - 240 V
Vertical scan range	48 - 75 Hz	AC input frequency	50/60 Hz
Haze rate	25%	Energy efficiency scale	A to G
Pixel frequency (max)	594 MHz	Computer system	
RGB colour space	NTSC	Computer system *	✓
Colour gamut	72%	Computer system type	System on Chip (SoC)
Ports & interfaces		Built-in processor *	✓
HDMI ports quantity *	3	Operating system installed	Tizen 7.0
HDMI version	2.0	Weight & dimensions	
HDMI input ports quantity	3	Display width	969.5 mm
DVI port *	✗	Display depth	28.5 mm
DisplayPorts quantity *	1	Display height	557.8 mm
DisplayPorts in	1	Display weight	8.8 kg
DisplayPort version	1.2	Packaging data	
USB port *	✓	Package width	1093 mm
USB ports quantity	2	Package depth	126 mm
Ethernet LAN *	✓	Package height	667 mm
Ethernet LAN (RJ-45) ports	1	Package weight	11.3 kg
Wi-Fi *	✓		
RS-232 interface	✓		

Ports & interfaces		Operational conditions	
Infrared data port	✓	Operating temperature (T-T)	0 - 40 °C
Remote (IR) input	1	Operating relative humidity (H-H)	10 - 80%
Audio		Certificates	
Built-in speaker(s) *	✗	Certification	Class B 60950-1, 62368-1
Design		Technical details	
Product design *	Digital signage flat panel	Audio out (mini jack)	1
Placement supported *	Indoor	Other features	
Product colour *	Black	Bluetooth	✓
Screen shape	Flat	Flash memory	16000 MB
VESA mounting *	✓	RS-232 input ports	1
Panel mounting interface	200 x 200 mm	RS-232 output ports	1
Bezel width (bottom)	1.15 cm	RJ-45 input ports	1
Bezel width (side)	1.15 cm	Optional features	WMN-B50SC STN-L4355C



8806095205014

Disclaimer. The information published here (the "Information") is based on sources that can be considered reliable, typically the manufacturer, but this Information is provided "AS IS" and without guarantee of correctness or completeness. The Information is only indicative and can be changed at any time without notification. No rights can be based on the Information. Suppliers or aggregators of this Information do not accept any liability with regard to the content of (web)pages and other documents, including its Information. The publisher of the Information can not be held liable for the content of 3rd party websites that are linking this Information or are linked to from this Information. You as the User of the Information are solely responsible for the choice and usage of this Information. You are not entitled to transfer, copy or otherwise multiply or distribute the Information. You are obliged to follow the directions of the copyright owner(s) with regard to the use of the Information. Exclusively Dutch law is applicable. With regard to price and stock data on the site, the publisher followed a number of starting points, which are not necessarily relevant for your private or business circumstances. Therefore, the price and stock data are only indicative and are subject to changes. You are personally responsible for the way you use and apply this information. As a user of the Information or sites or documents in which this Information is included, you will adhere to standard fair use including avoidance of spamming, ripping, intellectual-property violations, privacy violations, and any other illegal activity.

Publication date: 16-DEC-2024. Prints or copies of Information are only valid on the printed Publication date