

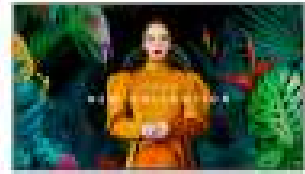


Samsung 75" Crystal UHD Signage QHC

Merk : Samsung

Productfamilie: QHC

Artikelcode:
LH75QHCEBGCXEN



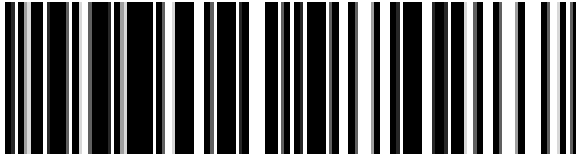
Productnaam : 75" Crystal UHD Signage QHC



75", VA, LED, 4K UHD (3840 x 2160), 700 nit, 4000:1, 178/178, 8 ms, Bluetooth, WiFi, RJ-45, HDCP, DP, HDMI, RS232, AC 100-240V, 50/60Hz, 1682.3 x 960.4 x 28.5 mm, 34.6 kg
Samsung 75" Crystal UHD Signage QHC. Product design: Digitale signage flatscreen.
Beeldschermdiagonaal: 190,5 cm (75"), Display technologie: LCD, Resolutie: 3840 x 2160 Pixels, Helderheid: 700 cd/m², HD type: 4K Ultra HD. Wi-Fi. Operating hours (hours/days): 24/7. Inclusief besturingssysteem: Tizen. Kleur van het product: Zwart

Display		Design	
Panel type	VA	Screen shape	Flat
LED backlight	✓	VESA mounting *	✓
Display diagonal *	190.5 cm (75")	Panel mounting interface	400 x 400 mm
Display technology *	LCD	Bezel width (bottom)	1.34 cm
Display resolution *	3840 x 2160 pixels	Bezel width (side)	1.34 cm
Display brightness *	700 cd/m ²	Bezel width (top)	1.34 cm
HD type *	4K Ultra HD	Bezel colour	Charcoal Black
Touchscreen *	✗	Performance	
Response time	8 ms	Purpose *	Universal
Contrast ratio (typical)	4000:1	Operating hours (hours/days)	24/7
Dynamic contrast ratio marketing name	Mega Contrast	HDCP	✓
Viewing angle, horizontal	178°	HDCP version	2.2
Viewing angle, vertical	178°	Power	
Pixel pitch	0.429 x 0.429 mm	Power consumption (typical) *	275 W
Display diagonal (metric)	189 cm	Power consumption (sleep)	0.5 W
Horizontal scan range	30 - 81 kHz	AC input voltage	100 - 240 V
Vertical scan range	48 - 75 Hz	AC input frequency	50/60 Hz
Haze rate	25%	Computer system	
Pixel frequency (max)	594 MHz	Operating system installed	Tizen
Colour gamut	72%	Operating system version	7.0
Ports & interfaces		Weight & dimensions	
HDMI ports quantity *	3	Display width	1682.3 mm
HDMI version	2.0	Display depth	28.5 mm
HDMI input ports quantity	3	Display height	960.4 mm
DVI port *	✗	Display weight	34.6 kg
DisplayPorts quantity *	1	Packaging data	
DisplayPorts in	1	Package width	1839 mm
DisplayPort version	1.2	Package depth	180 mm
USB port *	✓	Package height	1113 mm
USB ports quantity	2	Package volume	45300 cm ³
Ethernet LAN *	✓	Operational conditions	
Ethernet LAN (RJ-45) ports	2	Operating temperature (T-T)	0 - 40 °C
Wi-Fi *	✓		
Audio (L/R) out	1		

Ports & interfaces		Operational conditions	
RS-232 interface	✓	Operating relative humidity (H-H)	10 - 80%
Infrared data port	✓	Certificates	
Design		Certification	Class B 60950-1, 62368-1
Product design *	Digital signage flat panel	Features	
Placement supported *	Indoor	Suitable for indoor use	✓
Product colour *	Black	Other features	
		Bluetooth	✓
		Flash memory	16000 MB
		Optional features	WMN-B50SC STN-L6585C



8806094974287

Disclaimer. The information published here (the "Information") is based on sources that can be considered reliable, typically the manufacturer, but this Information is provided "AS IS" and without guarantee of correctness or completeness. The Information is only indicative and can be changed at any time without notification. No rights can be based on the Information. Suppliers or aggregators of this Information do not accept any liability with regard to the content of (web)pages and other documents, including its Information. The publisher of the Information can not be held liable for the content of 3rd party websites that are linking this Information or are linked to from this Information. You as the User of the Information are solely responsible for the choice and usage of this Information. You are not entitled to transfer, copy or otherwise multiply or distribute the Information. You are obliged to follow the directions of the copyright owner(s) with regard to the use of the Information. Exclusively Dutch law is applicable. With regard to price and stock data on the site, the publisher followed a number of starting points, which are not necessarily relevant for your private or business circumstances. Therefore, the price and stock data are only indicative and are subject to changes. You are personally responsible for the way you use and apply this information. As a user of the Information or sites or documents in which this Information is included, you will adhere to standard fair use including avoidance of spamming, ripping, intellectual-property violations, privacy violations, and any other illegal activity.

Publication date: 16-DEC-2024. Prints or copies of Information are only valid on the printed Publication date